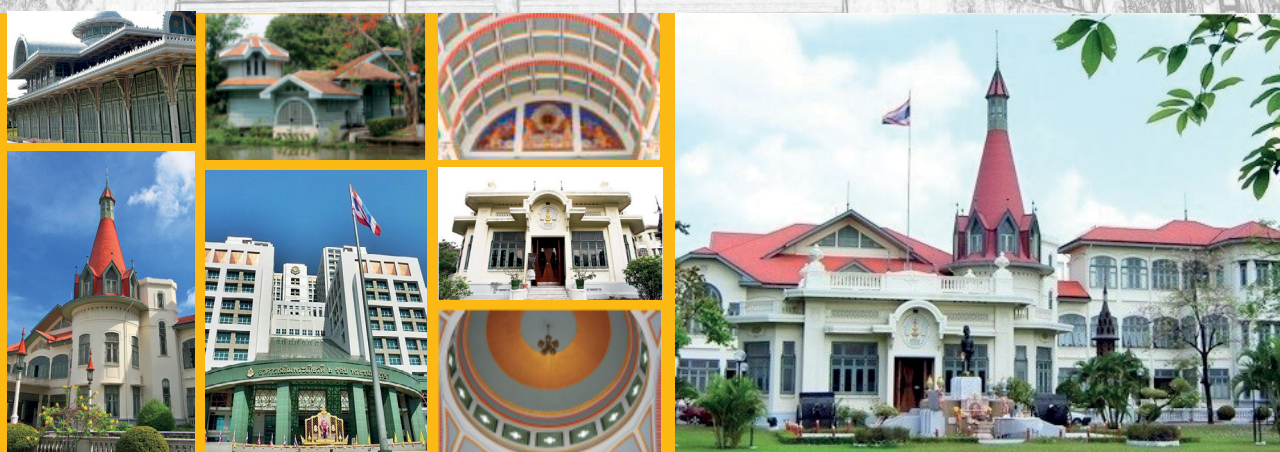




HOSPITAL-BASED CANCER REGISTRY

ANNUAL REPORT 2019



PHRAMONGKUTKLAO HOSPITAL

ARMY MEDICAL DEPARTMENT

MINISTRY OF DEFENCE

THAILAND

ISBN : 978-616-422-077-5

PHRAMONGKUTKLAO HOSPITAL EXCELLENT CENTER OF CANCER CARE 2019

Title	Phramongkutklao Hospital Cancer Registry Report 2019
Editorial Board	<p>Naiyarat Prasongsook, M.D. Chairman of cancer Registry Committee, Chairman Excellent Center of Cancer Care.</p> <p>Kritsada Srithanaphakarangkul, M.D. Chairman Cancer of the Data Information committee</p>
Published by	<p>Clinical Epidemiology Unit and Oncology Department, Phramongkutklao Hospital 315 Chalermparakiet Building, Ratchawithi Road, Ratchathewi District, Thung Phaya Thai Subdistrict. Bangkok 10400</p> <p>Tel. & Fax. : 027633047, 023547780</p>
Published Edition Physical	<p>2021 Twelfth 67 pages</p>
ISBN	978-616-422-077-5



EXCELLENT CENTER OF CANCER CARE

HOSPITAL-BASED CANCER REGISTRY

ANNUAL REPORT

2019

Phramongkutklao Hospital
Royal Thai Army Medical Department
Ministry of Defence
Bangkok, Thailand

Edited By
Y.Tanapat and K.Srithanaphakarangkul

Edition : December, 2019

ISBN : 978-616-422-077-5

MESSAGE FROM DIRECTOR OF PHRAMONGKUTKLAO HOSPITAL



The Phramongkutklao Hospital is proud to present the Cancer Registry Report 2019. The report collects information on all new cancer cases. Data collected include the clinical characteristics of the cancer (site, histology, behavior, grade, extent of disease) and treatment details on the cancer patient. The registry has a comprehensive quality assurance program in place to ensure that the data are complete, accurate and timely.

I would like to thank all our collaborators for their eflust in providing data presented in this volume. I would like to express my gratitude to the devoted staffs of cancer registry in all cancer units for the immense amount of work that has been done in preparation of the statistics and graphics for this volume.

A handwritten signature in blue ink, consisting of stylized, flowing letters.

Surasak Tanudsintum, Maj.Gen.
Director General of Phramongkutklao Hospital
Dean of Phramongkutklao College of Medicine
Major General, Royal Thai Army



INTRODUCTION

The Phramongkutklao Hospital Cancer Registry Report 2019 is a hospital based cancer registry of new cancer patients initially diagnosed or initially treated at Phramongkutklao Cancer Center from January 1, 2019 to December 31, 2019. All new cancer patients registered during the mentioned period were treated at the various Cancer Units under The Excellent center of Cancer Care, Phramongkutklao Hospital. Patients were either primarily diagnosed or referred from army hospitals (under supervision of the Royal Thai Army Medical Department) as well as public and private hospitals. The objective of this is to report new cancer patients regarding method of diagnosis, pathological types, staging, behavior, grading, extension and primary treatment modalities. Phramongkutklao Hospital has initiated a hospital cancer registry system based on the existing hospital data management system since 2008. This system has enabled physicians and nurses taking care of cancer patients to update patient information on the cancer registry at Cancer Units on a real-time basis. Thus information obtained can be corrected and updated by persons in charge of patient care at the time of the patient's hospital visit. This process should contribute to the validity of information in the Cancer Registry.

This Cancer Registry Report would not be possible without the dedicated input of data from the staff of the Cancer Clinics and the Cancer Units from different departments at Phramongkutklao Cancer Center.



Assist.Prof. Naiyarat Prasongsook, M.D., M.S., Lt.Col.

Chairman

Cancer Registry Committee
Phramongkutklao Cancer Center



EXCELLENT CENTER OF CANCER CARE PHRAMONGKUTKLAO HOSPITAL

1.	Maj.Gen.Surasak	Tanudsintum	Consultant
2.	Col. Pariyanan	Jaruchinda	Consultant
3.	Col. Rachata	Lumkul	Consultant
4.	Col. Kasan	Seetalarom	Consultant
5.	Col. Naiyarat	Prasongsook	Chairman of Administor Committee
6.	Col. Sukchai	Satthaporn.	Member
7.	Col. Chinakrit	BoonyaUssadorn	Member
8.	Col. Satit	Siriboonrid	Member
9.	Col. Sirinthip	Songwutwichai	Member
10.	Col. Chanchai	Traivaree	Member
11.	Col. Phutsapong	Srisawat	Member
12.	Lt.Col. Sithapan	Munjupong	Member
13.	Col. Kristsanamon	Rittiluechai	Member
14.	Lt.Col. Chonlada	Laoruagroj	Member
15.	Col Vana	Sangsasri	Member
16.	Lt.Col. Jarey	Ketsirichai	Member
17.	Lt.Col. Siriwimon	Saichaemchan	Member
18.	Lt.Col. Watcharaporn	bourchom	Member
19.	Lt.Col. Kanya	Ketkong	Member
20.	Lt.Col. Nattapoang	Binsri	Member
21.	Lt.Col. Chalinee	Monserenusorn	Member
22.	Lt.Col. Usa	Rittitada	Member
23.	Lt.Col. Supicha	Wongphun	Member
24.	Lt.Col. Kannadit	Prayongratana	Member
25.	Maj. Suvicha	Khampunnip	Member
26.	Maj. Sujitra	Shoolerd	Member
27.	Maj. Weerawan	Kaesai	Member
28.	Maj. Piyanuch	Srisuk	Member
29.	Maj. Nongnut	Seedapalee	Member
30.	Lt.Col. Rapeeporn	Kanchanapachana	Member



EXCELLENT CENTER OF CANCER CARE PHRAMONGKUTKLAO HOSPITAL

31.	Maj. Chetsuda	Khwanakorn	Member
32.	Capt. Sutipat	Pairojboriboon	Member
33.	Lt. Chatchanin	Ajalanond	Member
34.	Dr. Panjawit	Wuttiapanich	Member
35.	Maj. wanvipa	Malaithong	Member
36.	Capt. Supittha	Tongpit	Member
37.	Maj. Phapasi	Punphasoed	Member
38.	Col. Jariya	Ketkaeo	Member
39.	Col. Waniknan	Hatsadin	Member
40.	Capt. Patcharaporn	liamsuwan	Member
41.	Capt. Atcharaporn	Sittichai	Member

CANCER REGISTRY STAFF

1. Miss Rungthip Boonyai, B.Com. (Computer)
2. Miss Passaraporn Kobthong, B.Sc. (Statistics)



TABLE OF CONTENTS

Title		
List of tables :		Page
Table 1	Distribution of new cancer patients by gender : 2019	1
Table 2	Number of all new patients : 2008-2019	2
Table 3	Ten leading primary sites of new cancer patients by gender : 2019	3
Table 4	Ten leading primary sites of new cancer patients in male : 2019	4
Table 5	Ten leading primary sites of new cancer patients in female : 2019	5
Table 6	Distribution of new cancer patients by age group and gender : 2019	6
Table 7	Distribution of new cancer patients by stage and gender : 2019	7
Table 8	Histologic differentiation of all solid cancer : 2019	8
Table 9	Immunophenotype designation for lymphomas and leukaemias : 2019	9
Table 10	Distribution of new cancer patients by extension and gender : 2019	9
Table 11	Distribution of new cancer patients by method and gender : 2019	10
Table 12	Distribution of new cancer patients by treatment modalities and gender : 2019	11
Table 13	Distribution of new cancer patients by treatment unit and gender: 2019	12
Table 14	Distribution of new cancer patients by status 2019	13
Table 15	Distribution of new cancer patients by follow up status and gender 2019	13
Table 16	Distribution of new military personnel cancer patients by age group and gender : 2019	14
Table 17	Distribution of new cancer patients by rank and gender : 2019	15
Table 18	Distribution of new childhood cancer patients (age 0-19) by age group and gender : 2019	16
Table 19	Distribution of new childhood cancer patients (age 0-19) by primary sites : 2019	16
Table 20	Distribution of new childhood cancer patients (age 0-19) by treatment modalities and gender : 2019	17
Table 21	Distribution of new childhood cancer patients (age 0-19) by method and gender : 2019	17
Table 22	Distribution of new childhood cancer patients (age 0-19) by type of extension and gender : 2019	18
Table 23	Distribution of new childhood cancer patients (age 0-19) by follow up and gender : 2019	18
Table 24	Number of new cancer patient stage and gender : 2019	19-23



TABLE OF CONTENTS

Title		
List of tables :		Page
Description of the leading site of cancers ordinal 1-3		
1. Trachea, bronchus and lung cancer		
Table 25	Trend of trachea, bronchus and lung cancer in Phramongkutklao hospital : 2008-2019	25
Table 26	Distribution of new trachea, bronchus and lung cancer patients by age group and gender	26
Table 27	Distribution of new trachea, bronchus and lung cancer patients by stage and gender : 2019	27
Table 28	Distribution of new trachea, bronchus and lung cancer patients by method and gender : 2019	28
Table 29	Distribution of new trachea, bronchus and lung cancer patients by extension and gender : 2019	28
Table 30	Distribution of new trachea, bronchus and lung cancer patients by treatment modalities and gender : 2019	29
Table 31	Distribution of new trachea, bronchus and lung cancer patients by follow up status and gender : 2019	29
2. Breast cancer		
Table 32	Trend of breast cancer in Phramongkutklao hospital : 2008-2019	30
Table 33	Distribution of new breast cancer patients by age group and gender : 2019	31
Table 34	Distribution of new breast cancer patients by stage and gender : 2019	32
Table 35	Distribution of new breast cancer patients by method and gender : 2019	33
Table 36	Distribution of new breast cancer patients by extension and gender : 2019	33
Table 37	Distribution of new breast cancer patients by treatment modalities and gender : 2019	34
Table 38	Distribution of new breast cancer patients by follow up status and gender : 2019	34
3. Colon and rectum cancer		
Table 39	Trend of colon and rectum cancer in Phramongkutklao hospital : 2008-2019	35
Table 40	Distribution of new colon and rectum cancer patients by age group and gender : 2019	36
Table 41	Distribution of new colon and rectum cancer patients by stage and gender : 2019	37
Table 42	Distribution of new colon and rectum cancer patients by method and gender : 2019	38
Table 43	Distribution of new colon and rectum cancer patients by extension and gender: 2019	38
Table 44	Distribution of new colon and rectum cancer patients by treatment modalities and gender : 2019	39
Table 45	Distribution of new colon and rectum cancer patients by follow up status and gender : 2019	39



TABLE OF CONTENTS

Title		
List of tables :		Page
Description of the leading site of cancers ordinal 4-6		
4. Liver and intrahepatic bile ducts cancer		
Table 46	Distribution of new liver and intrahepatic bile ducts cancer patients by age group and gender : 2019	40
Table 47	Distribution of new liver and intrahepatic bile ducts cancer patients by stage and gender : 2019	41
Table 48	Distribution of new liver and intrahepatic bile ducts cancer patients by method and gender : 2019	42
Table 49	Distribution of new liver and intrahepatic bile ducts cancer patients by extension and gender : 2019	42
Table 50	Distribution of new liver and intrahepatic bile ducts cancer patients by treatment modalities and gender : 2019	43
Table 51	Distribution of new liver and intrahepatic bile ducts cancer patients by follow up status and gender : 2019	43
5. Non - Hodgkin's Lymphoma cancer		
Table 52	Distribution of new non-hodgkin's lymphoma cancer patients by age group and gender: 2019	44
Table 53	Distribution of new non-hodgkin's lymphoma cancer patients by stage and gender : 2019	45
Table 54	Distribution of new non-hodgkin's lymphoma cancer patients by method and gender: 2019	46
Table 55	Distribution of new non-hodgkin's lymphoma cancer patients by extension and gender: 2019	46
Table 56	Distribution of new non-hodgkin's lymphoma cancer patients by treatment modalities and gender: 2019	47
Table 57	Distribution of new non-hodgkin's lymphoma cancer patients by follow up status and gender : 2019	47
6. Thyroid cancer		
Table 58	Distribution of new thyroid patients by age group and gender: 2019	48
Table 59	Distribution of new thyroid patients by stage and gender: 2019	49
Table 60	Distribution of new thyroid patients by method and gender: 2019	50
Table 61	Distribution of new thyroid patients by extension and gender: 2019	50
Table 62	Distribution of new thyroid patients by treatment modalities and gender: 2019	51
Table 63	Distribution of new thyroid patients follow up status and gender: 2019	51



TABLE OF CONTENTS

Title		
List of tables :		Page
Number of cases by age-group in sex		
Table 64	Distribution of new cancer in male by age - group : 2019	52
Table 65	Distribution of new cancer in female by age - group : 2019	53
Distribution of new cancer in by morphology and site : 2019		
Table 66	Distribution of new cancer patients by morphology and site : 2019	54-62
Distribution of new cancer patients: 2016-2020		
Table 67	Distribution of new cancer patients by follow up and gender: 2015-2019	63
Table 68	The leading primary sites of new cancer by gender: 2015-2019	63
Table 69	The leading primary sites of new cancer by follow up and gender: 2015-2019	64
Table 70	The 60 months survival time (median) top 6 by gender in 2015-2019	64



FIGURE OF CONTENTS

Title		
List of tables :		Page
Figure 1	All new cancer cases in Phramongkutklao hospital :2008-2019	1
Figure 2	Trend of number of all new cancer patients by gender :2008-2019	2
Figure 3	Ten leading primary sites of new cancer patients in male : 2019	4
Figure 4	Ten leading primary sites of new cancer patients in female : 2019	5
Figure 5	Distribution of new cancer patients by age group and gender : 2019	6
Figure 6	Distribution of new cancer patients by stage and gender : 2019	7
Figure 7	Histologic differentiation of all solid cancer : 2019	8
Figure 8	Distribution of new cancer patients by extension and gender : 2019	9
Figure 9	Distribution of new cancer patients by method and gender : 2019	10
Figure 10	Distribution of new cancer patients by treatment unit and gender: 2019	12
Figure 11	Distribution of new cancer patients by follow up status : 2019	13
Figure 12	Distribution of new military personnel cancer patients by age group and gender : 2019	14
Figure 13	Distribution of new cancer patients by rank and gender : 2019	15



FIGURE OF CONTENTS

Title		
List of tables :		Page
Description of the leading site of cancers ordinal 1-6		
1. Trachea, bronchus and lung cancer		
Figure 14	Distribution of new trachea, bronchus and lung cancer patients by age group and gender	26
Figure 15	Distribution of new trachea, bronchus and lung cancer patients by stage and gender : 2019	27
Figure 16	Distribution of new trachea, bronchus and lung cancer patients by extension and gender : 2019	28
2. Breast cancer		
Figure 17	Distribution of new breast cancer patients by age group and gender : 2019	31
Figure 18	Distribution of new breast cancer patients by stage and gender : 2019	32
Figure 19	Distribution of new breast cancer patients by extension and gender : 2019	33
3. Colon and rectum cancer		
Figure 20	Distribution of new colon and rectum cancer patients by age group and gender :2019	36
Figure 21	Distribution of new colon and rectum g cancer patients by stage and gender : 2019	37
Figure 22	Distribution of new colon and rectum cancer patients by extension and gender : 2019	38
4. Liver and intrahepatic bile ducts cancer		
Figure 23	Distribution of new liver and intrahepatic bile ducts cancer patients by age group and gender : 2019	40
Figure 24	Distribution of new liver and intrahepatic bile ducts cancer patients by stage and gender : 2019	41
Figure 25	Distribution of new liver and intrahepatic bile ducts cancer patients by extension and gender : 2019	42
5. Non - Hodgkin's Lymphoma cancer		
Figure 26	Distribution of new non-hodgkin's lymphoma cancer patients by age group and gender: 2019	44
Figure 27	Distribution of new non-hodgkin's lymphoma cancer patients by stage and gender: 2019	45
Figure 28	Distribution of new non-hodgkin's lymphoma cancer patients by extension and gender: 2019	46
6. Thyroid cancer		
Figure 29	Distribution of new thyroid cancer patients by age group and gender : 2019	48
Figure 30	Distribution of new thyroid cancer patients by stage and gender : 2019	49
Figure 31	Distribution of new thyroid cancer patients by extension and gender : 2019	50

FIGURE OF CONTENTS

Title		
List of tables :		Page
Distribution of the 60 month survival rate of cancers in 2016-2020		
Figure 32	The 60 months survival rate (top 6) in 2015-2019	64
Figure 33	The 60 months survival rate (top 6) by male in 2015-2019	65
Figure 34	The 60 months survival rate (top 6) by Female in 2015-2019	66



2019 HOSPITAL-BASED CANCER REGISTRY ANNUAL REPORT



TABLE 1 DISTRIBUTION OF NEW CANCER PATIENTS BY GENDER : 2019

Type of patients	Number of cases
Total new hospital patients	57,049 (100.00 %)
Total new cancer patients	1,720 (2.9 %)
Gender distribution of cancer	
• Male	885 (53.2 %)
• Female	835 (46.8 %)

FIGURE 1 : ALL NEW CANCER CASE IN PHRAMONGKUTKLOA HOSPITAL : 2008 – 2019

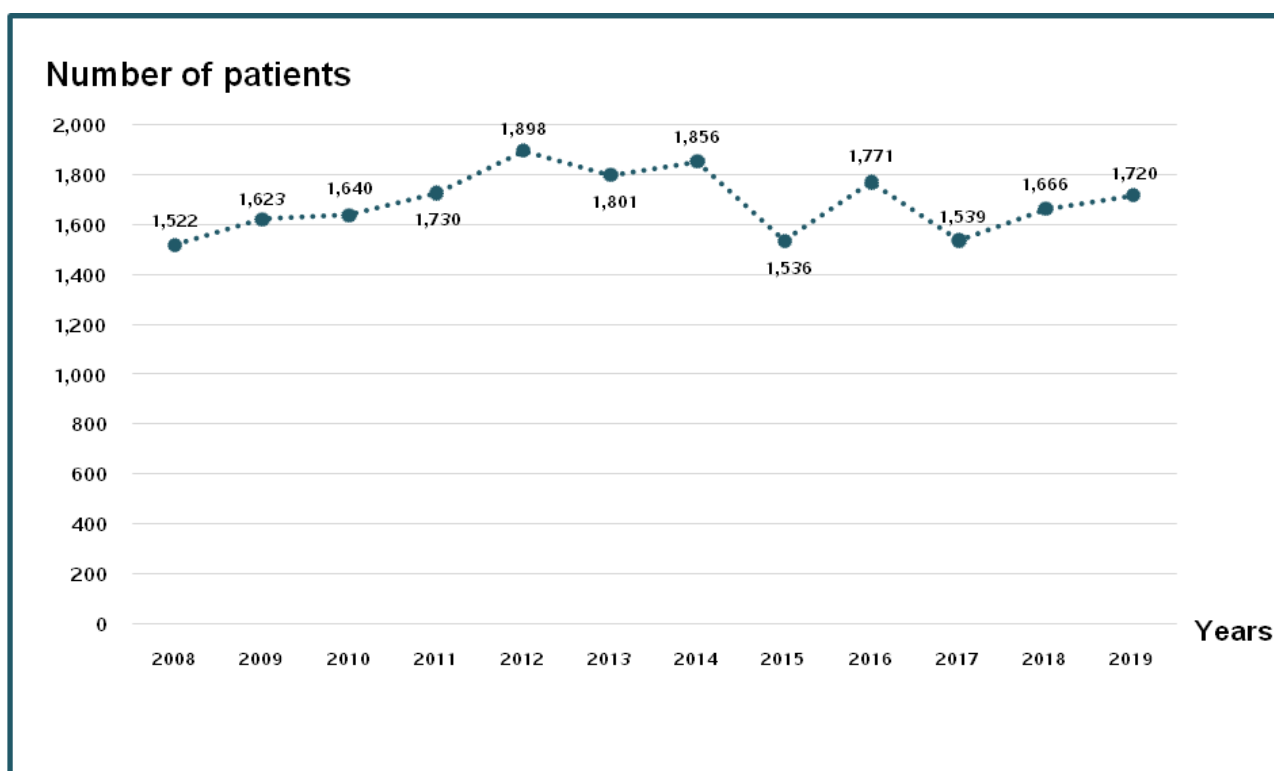
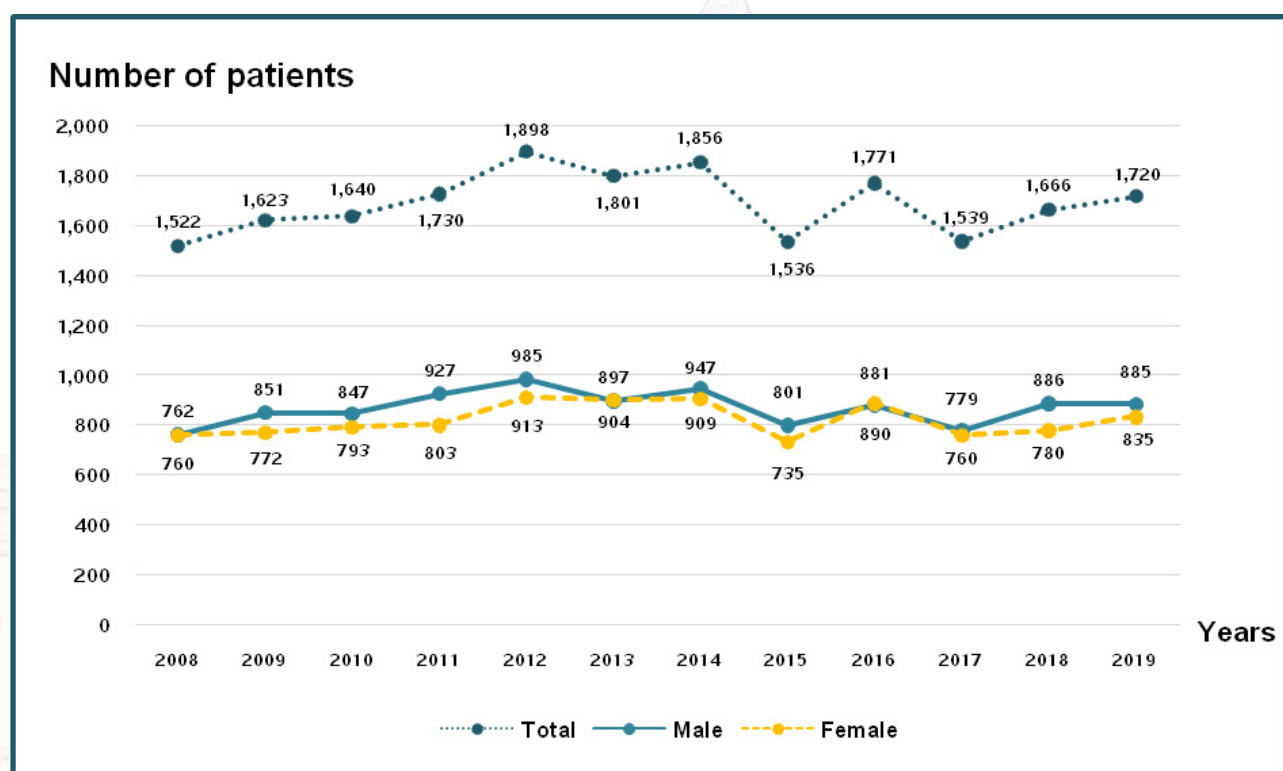


TABLE 2 NUMBER OF ALL NEW PATIENTS : 2008 – 2019

Years	New patient	New cancer case	Case	Male		Female	
	Number	Number	Percent	Number	Percent	Number	Percent
2551 (2008)	58,917	1,522	2.58	762	1.29	760	1.29
2552 (2009)	50,451	1,623	3.22	851	1.69	772	1.53
2553 (2010)	48,054	1,640	3.41	847	1.76	793	1.65
2554 (2011)	50,148	1,730	3.45	927	1.85	803	1.61
2555 (2012)	58,244	1,898	3.26	985	1.69	913	1.57
2556 (2013)	66,151	1,801	2.72	897	1.36	904	1.37
2557 (2014)	68,306	1,856	2.72	947	1.39	909	1.33
2558 (2015)	55,484	1,536	2.30	801	1.20	735	1.10
2559 (2016)	59,191	1,771	2.99	881	1.49	890	1.50
2560 (2017)	58,320	1,539	2.63	779	1.33	760	1.30
2561 (2018)	55,771	1,666	2.99	886	1.59	780	1.40
2562 (2019)	57,049	1,720	3.01	885	1.55	835	1.46

FIGURE 2 : TREND OF NUMBER OF ALL NEW PATIENTS BY GENDER : 2008 – 2019


2019 HOSPITAL-BASED CANCER REGISTRY ANNUAL REPORT



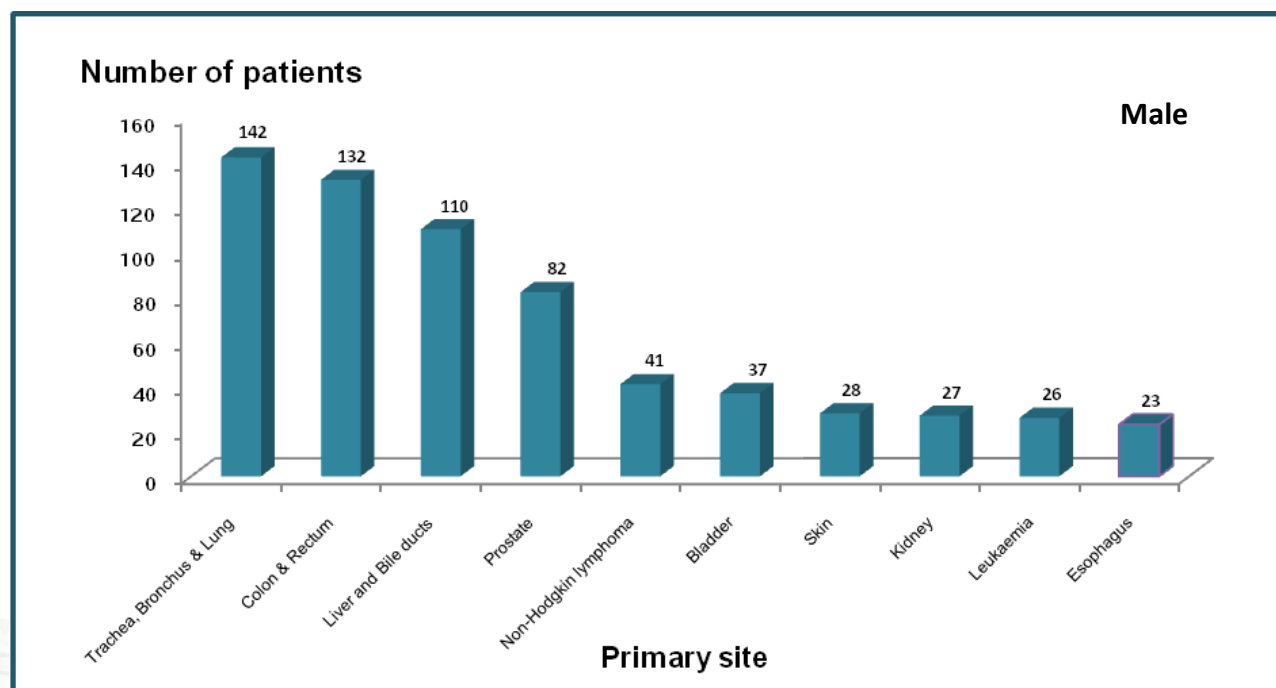
TABLE 3 TEN LEADING PRIMARY SITES OF NEW CANCER PATIENTS BY GENDER : 2019

Ordinal	Primary site	Male		Female		Total	
		Number	Percent	Number	Percent	Number	Percent
1	Colon & Rectum	132	14.9	91	10.9	223	13.0
2	Trachea, Bronchus & Lung	142	16.0	70	8.4	212	12.3
3	Breast	3	0.3	206	24.7	209	12.2
4	Liver and Bile ducts	110	12.4	24	2.9	134	7.8
5	Thyroid	19	2.1	83	9.9	102	5.9
6	Prostate	82	9.3	0	0	82	4.8
7	Non-Hodgkin lymphoma	41	4.8	25	3.0	66	3.8
8	Cervix uteri	0	0	59	7.1	59	3.4
9	Skin	28	3.2	29	3.5	57	3.3
10	Leukaemia	26	2.9	21	2.5	47	2.7



TABLE 4 TEN LEADING PRIMARY SITES OF NEW CANCER PATIENTS IN MALE : 2019

Ordinal	Primary site	Number	Percent
1	Trachea, Bronchus & Lung	142	16.0
2	Colon & Rectum	132	14.9
3	Liver and Bile ducts	110	12.4
4	Prostate	82	9.3
5	Non-Hodgkin lymphoma	41	4.6
6	Bladder	37	4.2
7	Skin	28	3.2
8	Kidney	27	3.1
9	Leukaemia	26	2.9
10	Esophagus	23	2.6

FIGURE 3 : TEN LEADING PRIMARY SITES OF NEW CANCER PATIENTS IN MALE : 2019




Ordinal	Primary site	Number	Percent
1	Breast	206	24.7
2	Colon & Rectum	91	10.9
3	Thyroid	83	9.9
4	Trachea, Bronchus & Lung	70	70
5	Cervix uteri	59	7.1
6	Ovary	38	4.6
7	Corpus uteri	36	4.3
8	Skin	29	3.5
9	Non-Hodgkin lymphoma	25	3.0
10	Liver and Bile ducts	24	2.9

FIGURE 4 : TEN LEADING PRIMARY SITES OF NEW CANCER PATIENTS IN FEMALE : 2019

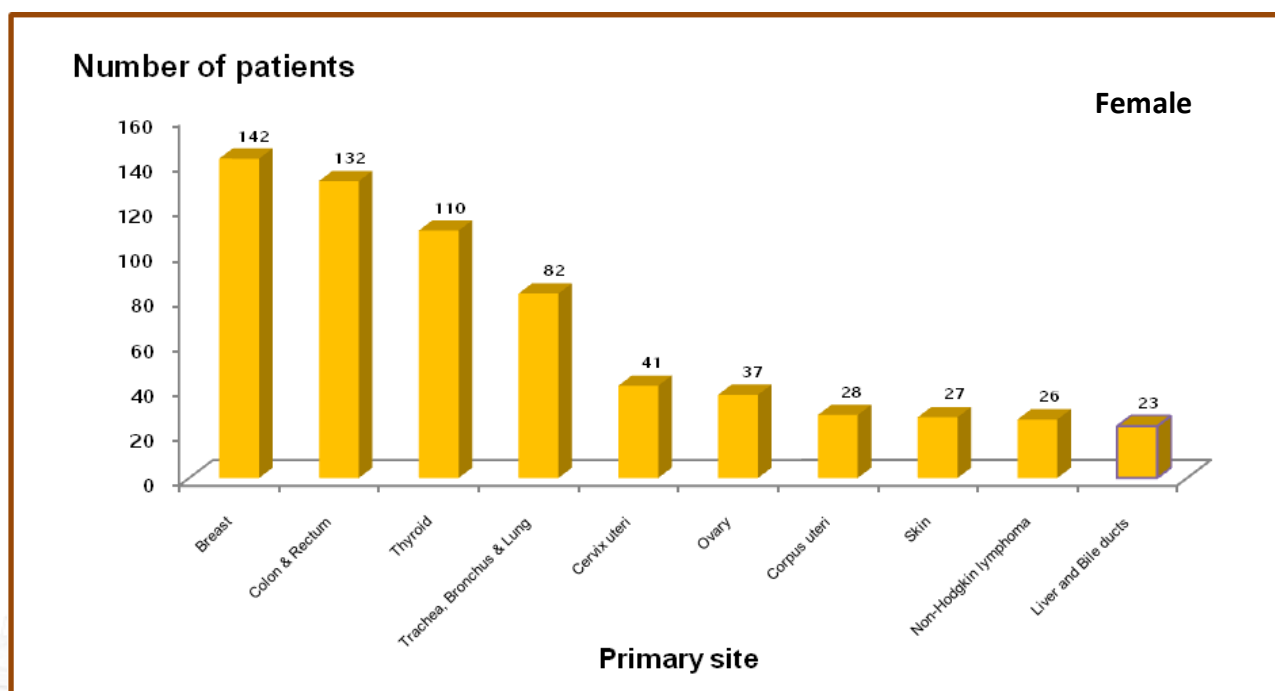
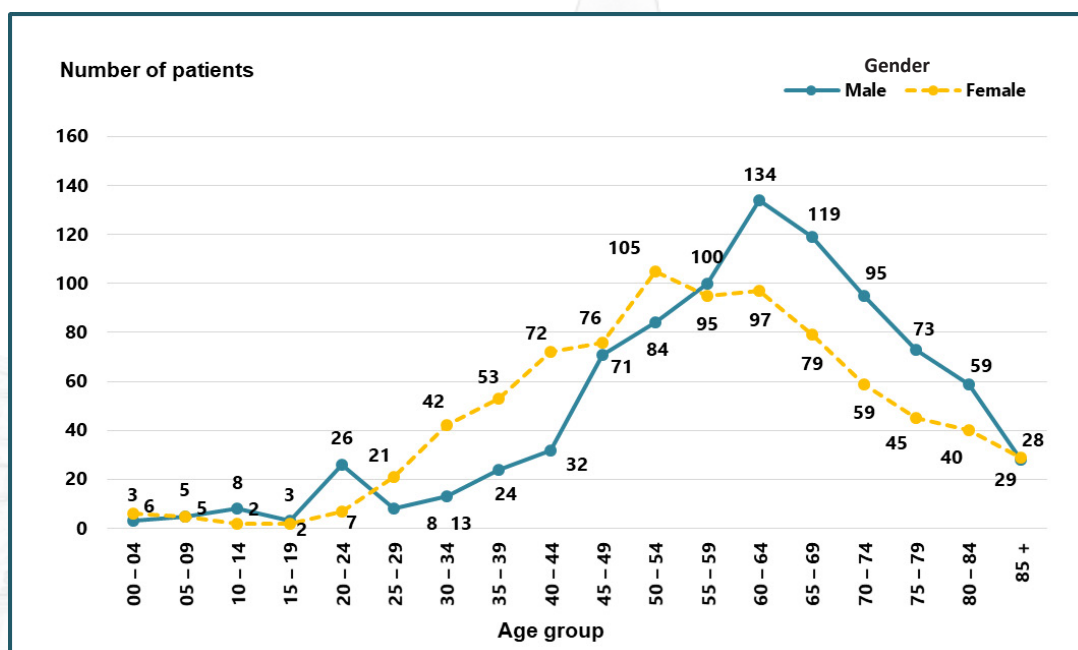


TABLE 6 DISTRIBUTION OF NEW CANCER PATIENTS BY AGE GROUP AND GENDER : 2019

Age group	Male		Female		Total	
	Number	Percent	Number	Percent	Number	Percent
0 – 4	3	0.3	6	0.7	9	0.5
5 – 9	5	0.6	5	0.6	10	0.6
10 – 14	8	0.9	2	0.2	10	0.6
15 – 19	3	0.3	2	0.2	5	0.3
20 – 24	26	2.9	7	0.8	33	1.9
25 – 29	8	0.9	21	2.5	29	1.7
30 – 34	13	1.5	42	5.0	55	3.2
35 – 39	24	2.7	53	6.3	77	4.5
40 – 44	32	3.6	72	8.6	104	6.0
45 – 49	71	8.0	76	9.1	147	8.5
50 – 54	84	9.5	105	12.6	189	11.0
55 – 59	100	11.3	95	11.4	195	11.3
60 – 64	134	15.1	97	11.6	231	13.4
65 – 69	119	13.4	79	9.5	198	11.5
70 – 74	95	10.7	59	7.1	154	9.0
75 – 79	73	8.2	45	5.4	118	6.9
80 – 84	59	6.7	40	4.8	99	5.8
85 +	28	3.2	29	3.5	57	3.3
Total	885	100.0	835	100.0	1,720	100.0

Majority of cases

FIGURE 5 : DISTRIBUTION OF NEW CANCER PATIENTS BY AGE GROUP AND GENDER : 2019


2019 HOSPITAL-BASED CANCER REGISTRY ANNUAL REPORT



TABLE 7 DISTRIBUTION OF NEW CANCER PATIENTS BY STAGE AND GENDER : 2019

Staging	Male		Female		Total	
	Number	Percent	Number	Percent	Number	Percent
Stage I	121	13.7	197	23.6	318	18.5
Stage II	221	25.0	245	29.3	466	27.1
Stage III	215	24.3	166	19.9	381	22.2
Stage IV	289	32.6	194	23.2	483	28.1
No stage	34	3.8	32	3.8	66	3.8
Unknown	5	0.6	1	0.2	6	0.3
Total	885	100.0	835	100.0	1,720	100.0

No stage: manual system including leukaemia

FIGURE 6 : DISTRIBUTION OF NEW CANCER PATIENTS BY STAGE AND GENDER : 2019

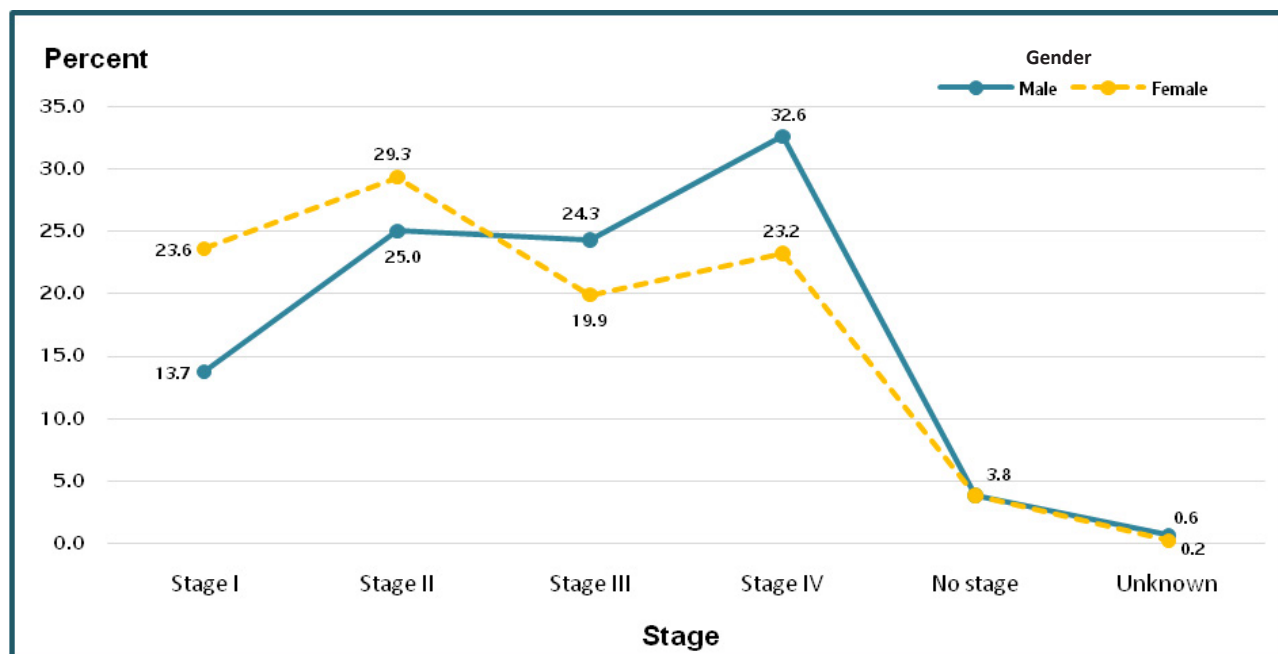


TABLE 8**HISTOLOGIC DIFFERENTIATION OF ALL SOLID CANCER : 2019**

Grade	Male		Female		Total	
	Number	Percent	Number	Percent	Number	Percent
Well differentiated	47	5.9	56	7.2	103	6.6
Moderately differentiated	330	41.7	430	55.5	760	48.5
Poorly differentiated	185	23.4	154	19.9	339	21.6
Undifferentiated	31	3.9	4	0.5	35	2.2
Differentiated not Determined	199	25.1	131	16.9	330	21.1
Total	792	100.0	775	100.0	1,567	100.0

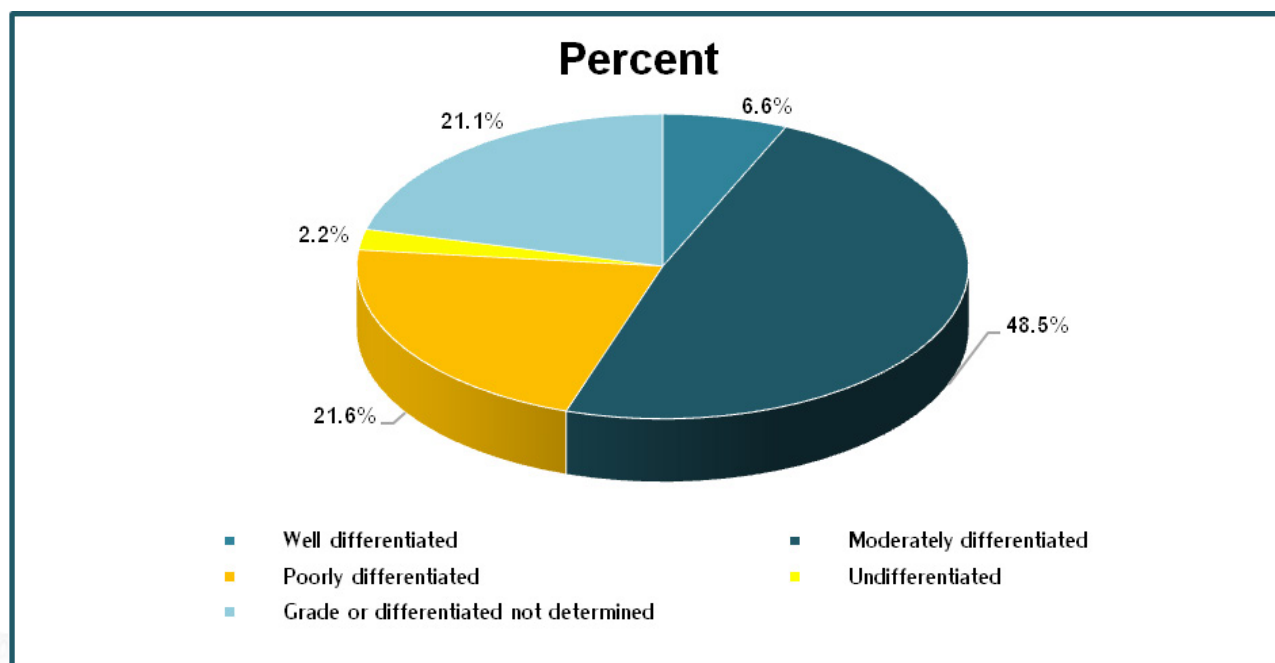
FIGURE 7 : HISTOLOGIC DIFFERENTIATION OF ALL SOLID CANCER : 2019



TABLE 9 IMMUNOPHENOTYPE DESIGNATION FOR LYMPHOMAS AND LEUKAEMIAS : 2019

Immunophenotype designation	Male		Female		Total	
	Number	Percent	Number	Percent	Number	Percent
T – Cell	17	18.3	10	16.7	27	17.6
B – Cell	74	79.5	50	83.3	124	81.0
Not stated or not applicable	2	2.2	0	0	2	1.4
Total	93	100.0	60	100.0	153	100.0

TABLE 10 DISTRIBUTION OF NEW CANCER PATIENTS BY EXTENSION AND GENDER : 2019

Extend	Male		Female		Total	
	Number	Percent	Number	Percent	Number	Percent
Localized	519	58.7	533	63.8	1,052	61.1
Regional lymph nodes	148	16.7	135	16.2	283	16.5
Distant metastasis	218	24.6	167	20.0	385	22.4
Total	885	100.0	835	100.0	1,720	100.0

FIGURE 8 : DISTRIBUTION OF NEW CANCER PATIENTS BY EXTENSION AND GENDER : 2019

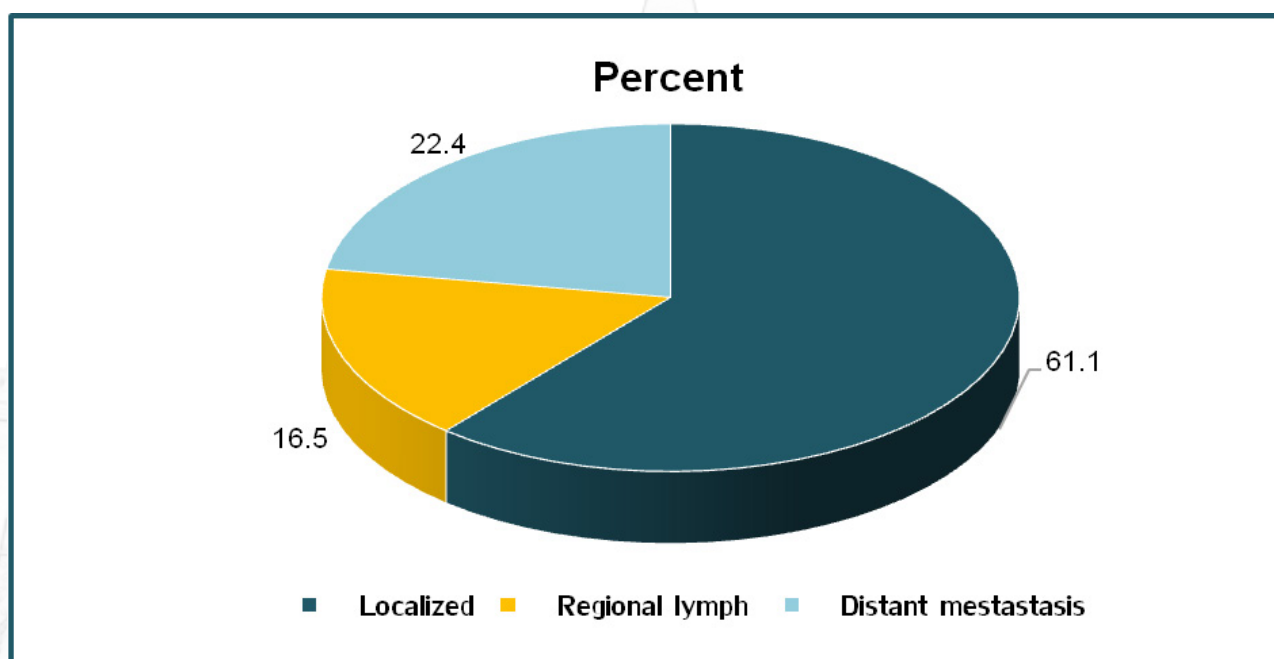


TABLE 11 DISTRIBUTION OF NEW CANCER PATIENTS BY METHOD AND GENDER : 2019

Method of diagnosis	Male		Female		Total	
	Number	Percent	Number	Percent	Number	Percent
Endoscopy & Radiology	32	3.6	18	2.2	50	2.9
Histopathology or Cytology	701	79.2	749	89.7	1,450	84.3
Bone marrow examination	90	10.2	56	6.7	146	8.5
Tumor marker	62	7.0	12	1.4	74	4.3
Total	885	100.0	835	100.0	1,720	100.0

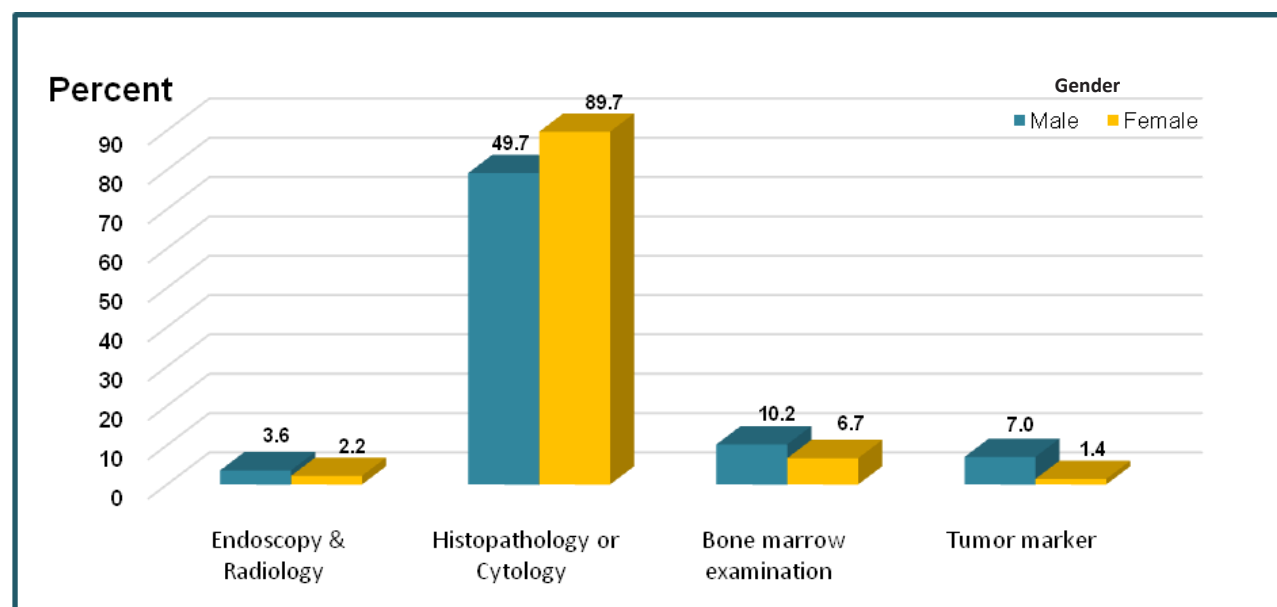
FIGURE 9 : DISTRIBUTION OF NEW CANCER PATIENTS BY METHOD AND GENDER: 2019


TABLE 12

DISTRIBUTION OF NEW CANCER PATIENTS BY TREATMENT MODALITIES AND GENDER : 2019

Treatment modality	Male		Female		Total	
	Number	Percent	Number	Percent	Number	Percent
Chemotherapy	257	29.0	219	26.2	476	27.7
Surgery	248	28.0	279	33.4	527	30.6
Radiotherapy	23	2.6	59	7.1	82	4.8
Hormone	2	0.2	1	0.1	3	0.2
Interventional	15	1.7	2	0.2	17	1.0
Supportive	9	1.0	5	0.6	14	0.8
Surgery & Chemotherapy	78	8.8	85	10.2	163	9.5
Surgery & Radiotherapy	15	1.7	20	2.4	35	2.0
Surgery & Hormone	0	0	1	0.1	1	0.1
Surgery & Interventional	1	0.1	0	0	1	0.1
Surgery & Radiotherapy & Chemotherapy	15	1.7	12	1.4	27	1.6
Surgery & Chemotherapy & Hormone	0	0	1	0.1	1	0.1
Surgery & Chemotherapy & Immunotherapy	0	0	3	0.4	3	0.2
Surgery & Chemotherapy & Interventional	1	0.1	0	0	1	0.1
Radiotherapy & Chemotherapy	37	4.2	25	3.0	62	3.6
Radiotherapy & Chemotherapy Radiotherapy & Chemotherapy	1	0.1	0	0	1	0.1
Radiotherapy & Supportive	0	0	1	0.1	1	0.1
Radiotherapy & Chemotherapy Radiotherapy & Chemotherapy	1	0.1	0	0	1	0.1
Chemotherapy & Hormone	0	0	1	0.1	1	0.1
Chemotherapy & Immunotherapy	4	0.5	2	0.2	6	0.3
Chemotherapy & Interventional	4	1.5	2	0.2	6	0.3
Others	38	4.3	20	2.4	58	3.4
Counseling	136	15.4	97	11.6	233	13.5
Total	885	100.0	835	100.0	1,720	100.0

TABLE 13

DISTRIBUTION OF NEW CANCER PATIENTS BY TREATMENT UNIT AND GENDER : 2019

Treatment unit	Male		Female		Total	
	Number	Percent	Number	Percent	Number	Percent
Medicine	408	46.1	273	32.7	681	39.6
General surgery	336	38.0	290	34.7	626	36.4
Ear Nose and Throat	96	10.8	63	7.5	159	9.2
Gynecologic oncology	0	0	141	16.9	141	8.2
Radiotherapy	11	1.2	48	5.7	59	3.4
Pediatric	18	2.0	11	1.3	29	1.7
Orthopedics	16	1.8	9	1.1	25	1.5
Total	885	100.0	835	100.0	1,720	100.0

FIGURE 10 : DISTRIBUTION OF NEW CANCER PATIENTS BY TREATMENT UNIT AND GENDER : 2019

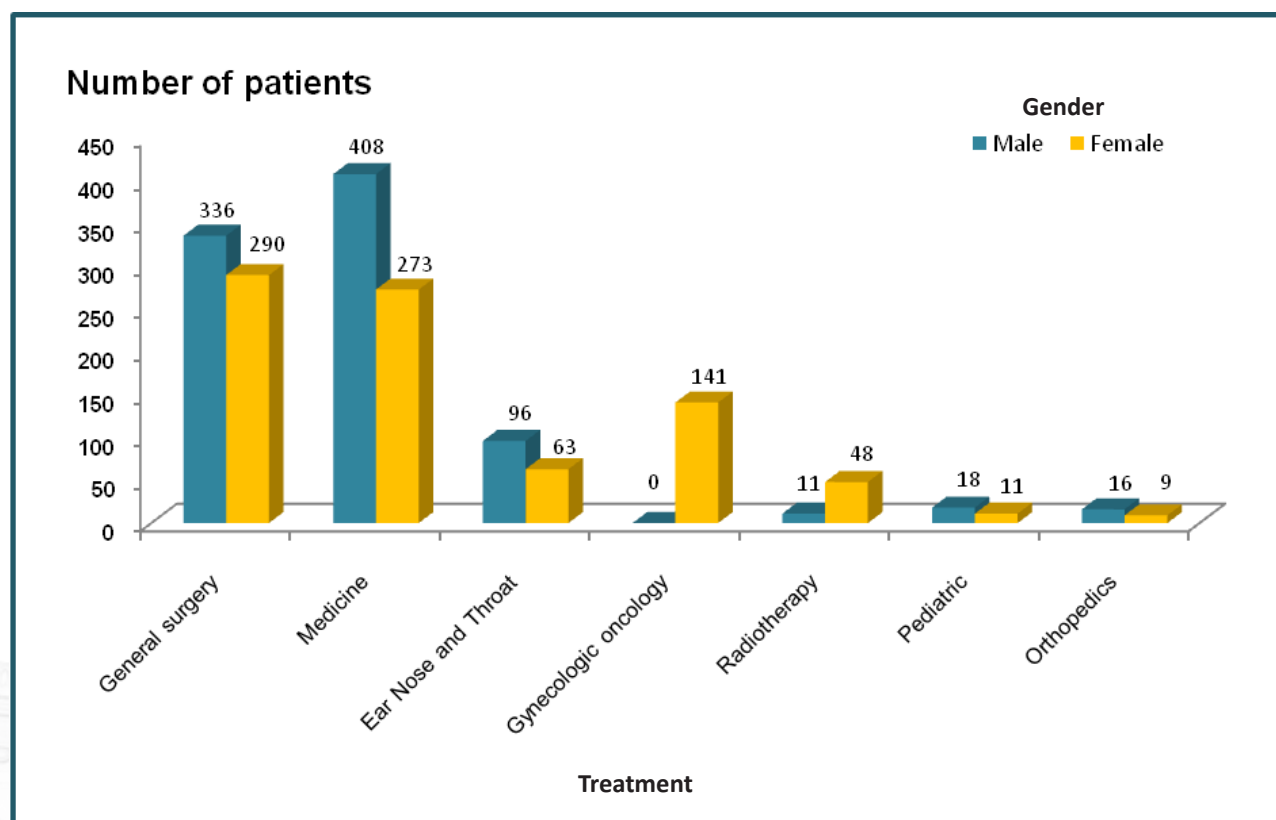




TABLE 14 DISTRIBUTION OF NEW CANCER PATIENTS BY STATUS : 2019

Follow up status	Male		Female		Total	
	Number	Percent	Number	Percent	Number	Percent
Military	220	24.9	31	3.7	251	14.6
Civilian	665	75.1	804	96.3	1,469	85.4
Total	885	100.0	835	100.0	1,720	100.0

TABLE 15 DISTRIBUTION OF NEW CANCER PATIENTS BY FOLLOW UP STATUS AND GENDER : 2019

Follow up status	Male		Female		Total	
	Number	Percent	Number	Percent	Number	Percent
Alive	815	92.1	791	94.7	1,606	93.4
Deaths	70	7.9	44	5.3	114	6.6
Total	885	100.0	835	100.0	1,720	100.0

FIGURE 11 : DISTRIBUTION OF NEW CANCER PATIENTS BY FOLLOW UP STATUS : 2019

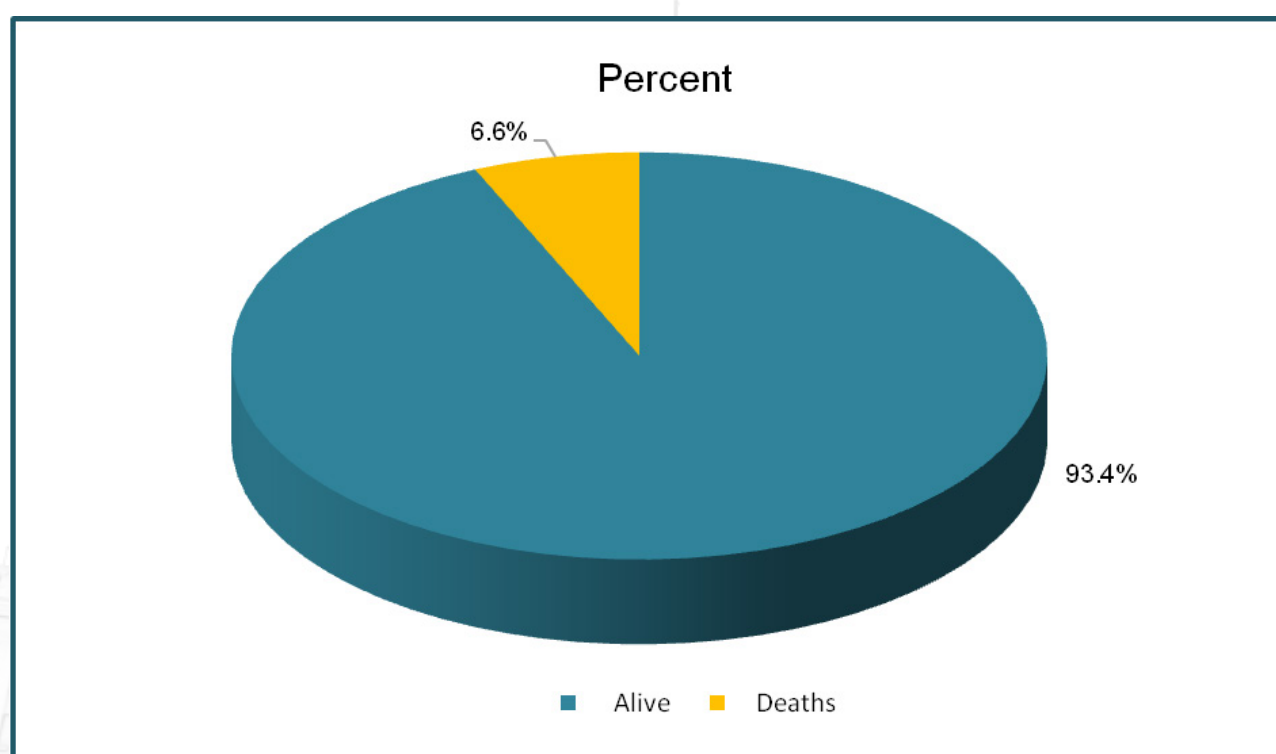


TABLE 16

DISTRIBUTION OF NEW MILITARY PERSONNEL CANCER PATIENTS BY AGE GROUP AND GENDER : 2019

Age group	Male		Female		Total	
	Number	Percent	Number	Percent	Number	Percent
00 – 24	8	3.6	0	0	8	3.2
25 – 29	1	0.5	0	0	1	0.4
30 – 34	4	1.8	1	3.2	5	2.0
35 – 39	3	1.4	3	9.7	6	2.4
40 – 44	6	2.7	0	0	6	2.4
45 – 49	14	6.4	1	3.2	15	6.0
50 – 54	13	5.9	6	19.4	19	7.6
55 – 59	33	15.0	7	22.6	40	15.9
60 – 64	34	15.5	4	12.9	38	15.1
65 – 69	35	15.9	5	16.1	40	15.9
70 – 74	23	10.5	3	9.7	26	10.4
75 – 79	15	6.8	1	3.2	16	6.4
80 – 84	20	9.1	0	0	20	8.0
85 +	11	5.0	0	0	11	4.4
Total	220	100.0	31	100.0	251	100.0

Majority of cases.

FIGURE 12 : DISTRIBUTION OF NEW MILITARY PERSONNEL CANCER PATIENTS BY AGE GROUP AND GENDER: 2019

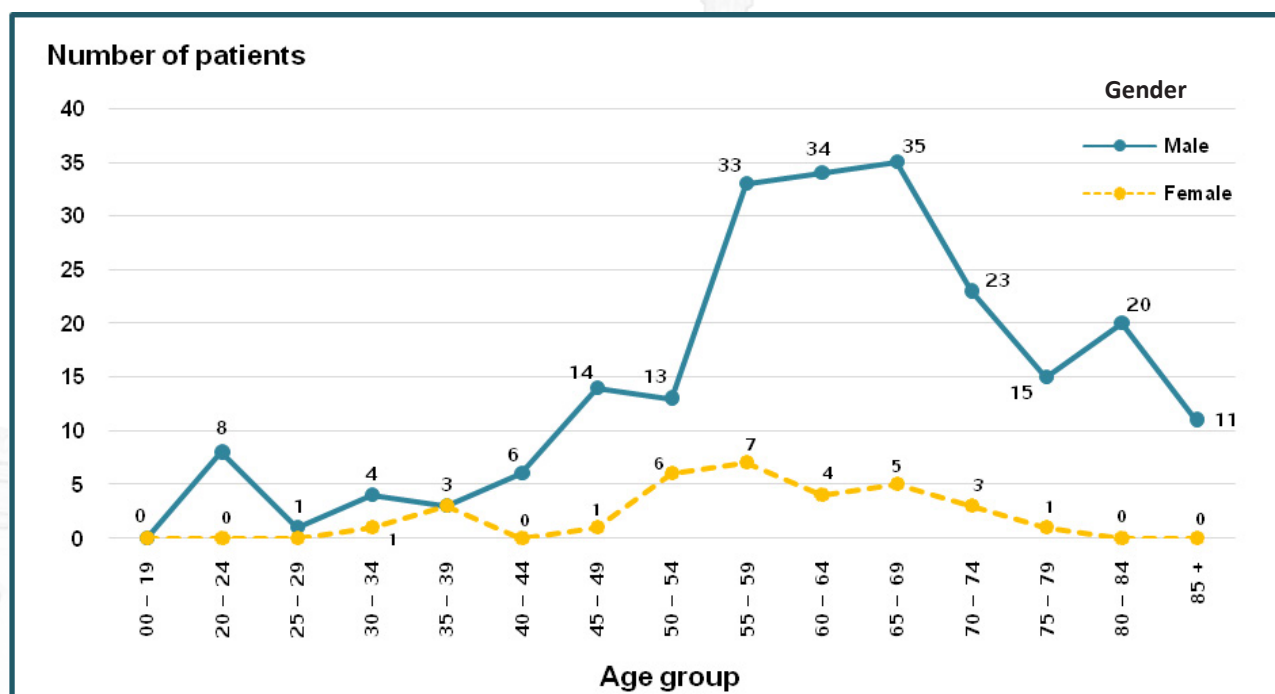




TABLE 17 DISTRIBUTION OF NEW CANCER PATIENTS BY RANK AND GENDER : 2019

Rank	Male		Female		Total	
	Number	Percent	Number	Percent	Number	Percent
Major General – General	41	18.6	4	12.9	45	17.9
Major – Colonel	60	27.4	15	48.4	75	29.9
Sub Lieutenant – Captain	65	29.5	4	12.9	69	27.5
Sergeant Major 3 rd - Sergeant Major 1 st	37	16.8	4	12.9	41	16.3
Private 1st class – Sergeant	10	4.5	4	12.9	14	5.6
Enlisted Soldier	7	3.2	0	0	7	2.8
Total	220	100.0	31	100.0	251	100.0

FIGURE 13 : DISTRIBUTION OF NEW CANCER PATIENTS BY RANK AND GENDER : 2019

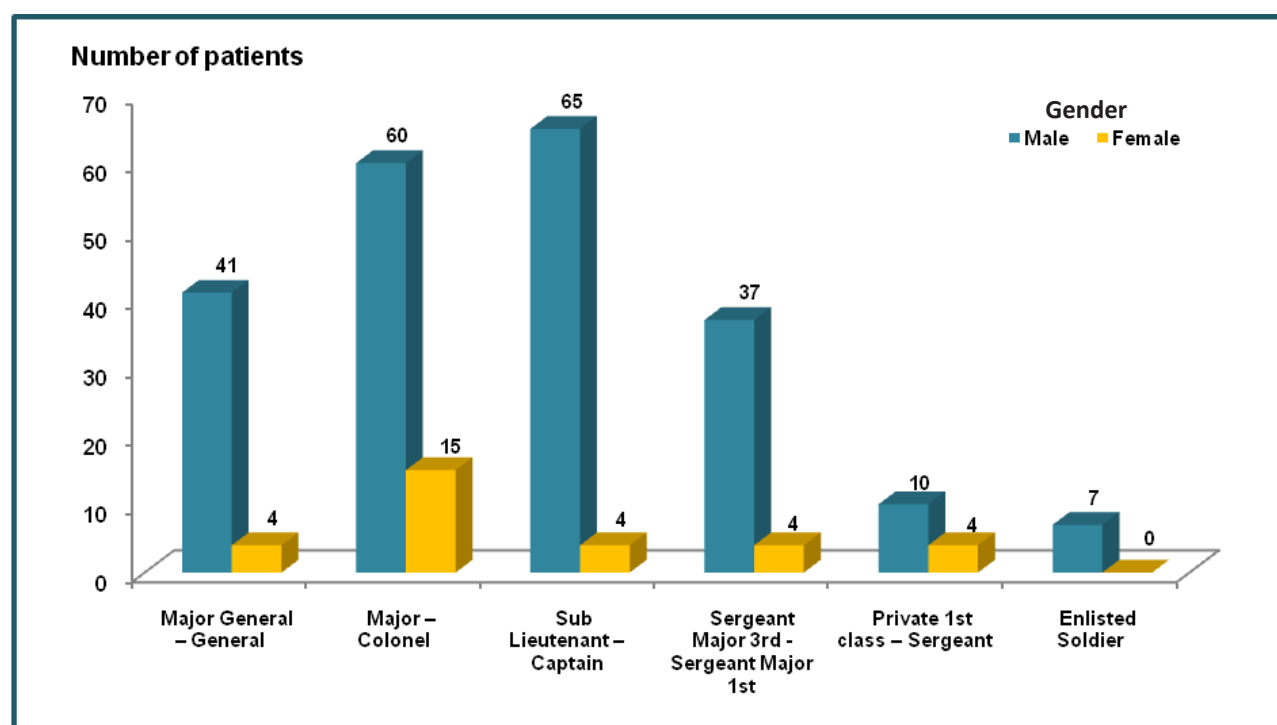


TABLE 18 DISTRIBUTION OF NEW CHILDHOOD CANCER PATIENTS (AGE 0 - 19) BY AGE GROUP AND GENDER : 2019

Age group	Male		Female		Total	
	Number	Percent	Number	Percent	Number	Percent
0 – 4	3	15.8	6	40.0	9	26.5
5 – 9	5	26.3	5	33.4	10	29.4
10 – 14	8	42.1	2	13.3	10	29.4
15 - 19	3	15.8	2	13.3	5	14.7
Total	19	100.0	15	100.0	34	100.0

TABLE 19 DISTRIBUTION OF NEW CHILDHOOD CANCER PATIENTS (AGE 0 - 19) BY PRIMARY SITES : 2019

Ordinal	Primary site	Male	Female	Total	
		Number	Number	Number	Percent
1.	Leukaemia	11	7	18	52.9
2.	Brain	2	1	3	8.8
3.	Bone & Articular cartilage	1	2	3	8.8
4.	Mesothelial & Soft tissue	1	2	3	8.8
5.	Non-Hodgkin's lymphoma	2	0	2	5.9
6.	Without specification of site	1	1	2	5.9
7.	Hodgkin's lymphoma	1	0	1	2.9
8.	Colon & Rectum	0	1	1	2.9
9.	Liver & Bile ducts	0	1	1	2.9
Total		19	15	34	100.0


TABLE 20
DISTRIBUTION OF NEW CHILDHOOD CANCER PATIENTS (AGE 0 - 19) BY TREATMENT MODALITIES AND GENDER : 2019

Treatment modality	Male		Female		Total	
	Number	Percent	Number	Percent	Number	Percent
Surgery	0	0.0	2	13.3	2	5.9
Chemotherapy	15	78.9	8	53.3	23	67.6
Surgery & Chemotherapy	2	10.5	1	6.7	3	8.8
Radiotherapy & Chemotherapy	2	10.5	2	13.3	4	11.8
Chemotherapy & Interventional	0	0.0	1	6.7	1	2.9
Surgery & Radiotherapy & Chemotherapy	0	0.0	1	6.7	1	2.9
Total	19	100.0	15	100.0	34	100.0

TABLE 21
DISTRIBUTION OF NEW CHILDHOOD CANCER PATIENTS (AGE 0 - 19) BY METHOD AND GENDER : 2019

Method of diagnosis	Male		Female		Total	
	Number	Percent	Number	Percent	Number	Percent
Bone marrow	13	68.4	7	46.7	20	58.8
Histopathology or Cytology	6	31.6	7	46.7	13	38.2
Tumor marker	0	0.0	1	6.6	1	2.9
Total	19	100	15	100	34	100

TABLE 22
DISTRIBUTION OF NEW CHILDHOOD CANCER PATIENTS (AGE 0 - 19) BY TYPE OF EXTENSION AND GENDER : 2019

Spreading/Metastasis	Male		Female		Total	
	Number	Percent	Number	Percent	Number	Percent
Localized	19	100.0	13	86.6	32	94.1
Regional lymph nodes	0	0.0	1	6.7	1	2.9
Distant metastasis	0	0.0	1	6.7	1	2.9
Total	19	100	15	100	34	100

TABLE 23
DISTRIBUTION OF NEW CHILDHOOD CANCER PATIENTS (AGE 0 - 19) BY FOLLOW UP AND GENDER : 2019

Follow up status	Male		Female		Total	
	Number	Percent	Number	Percent	Number	Percent
Alive	19	100.0	14	93.3	33	97.1
Deaths	0	0	1	6.7	1	2.9
Total	19	100.0	15	100.0	34	100.0

TABLE 24

NUMBER OF NEW CANCER PATIENTS STAGE AND GENDER: 2019

Site	Sex		Stage						
			I	II	III	IV	No stage	Unknown	Total
Lip and Oral cavity	Male		3	5	5	8	-	-	21
	Female		4	2	4	2	-	-	12
	Total	(N)	7	7	9	10	-	-	33
		(%)	21.2	21.2	27.3	30.3	-	-	100.0
Tonsil	Male		-	2	3	-	-	-	5
	Female		-	-	-	-	-	-	-
	Total	(N)	-	2	3	-	-	-	5
		(%)	-	40.0	60.0	-	-	-	100.0
Oropharynx	Male		3	3	6	2	-	-	14
	Female		0	0	0	1	-	-	1
	Total	(N)	3	3	6	3	-	-	15
		(%)	20.0	20.0	40.0	20.0	-	-	100.0
Nasopharynx	Male		-	3	3	4	-	-	10
	Female		1	1	4	6	-	-	12
	Total	(N)	1	4	7	10	-	-	22
		(%)	4.5	18.2	31.8	45.5	-	-	100.0
Hypopharynx	Male		1	-	6	7	-	-	14
	Female		-	-	1	1	-	-	2
	Total	(N)	1	-	7	8	-	-	16
		(%)	6.25	-	43.75	50.0	-	-	100.0
Other and ill-defined site in lip, oral cavity and pharynx	Male		-	2	-	-	-	-	2
	Female		-	1	1	-	-	-	2
	Total	(N)	-	3	1	-	-	-	4
		(%)	-	75.0	25.0	-	-	-	100.0
Esophagus	Male		2	3	7	10	-	1	23
	Female		-	-	-	-	-	-	-
	Total	(N)	2	3	7	10	-	-	23
		(%)	8.7	13.0	30.4	43.5	-	-	100.0
Stomach	Male		3	2	2	4	-	-	11
	Female		2	2	3	7	-	-	14
	Total	(N)	5	4	5	11	-	-	25
		(%)	20.0	16.0	20.0	44.0	-	-	100.0
Small intestine	Male		-	1	-	2	-	-	3
	Female		-	-	-	2	-	-	2
	Total	(N)	-	1	-	4	-	-	5
		(%)	-	20.0	-	80.0	-	-	100.0

TABLE 24

NUMBER OF NEW CANCER PATIENTS STAGE AND GENDER: 2019

Site	Sex		Stage						
			I	II	III	IV	No stage	Unknown	Total
Colon and Rectum	Male		19	35	39	39	-	-	132
	Female		14	21	34	22	-	-	91
	Total	(N)	33	56	73	61	-	-	223
		(%)	14.8	25.1	32.7	27.4	-	-	100.0
Anus	Male		-	-	-	3	-	-	3
	Female		1	-	-	-	-	-	-
	Total	(N)	1	-	-	3	-	-	4
		(%)	25.0	-	-	75.0	-	-	100.0
Liver and Bile ducts	Male		12	49	27	22	-	-	110
	Female		3	10	6	5	-	-	24
	Total	(N)	15	59	33	27	-	-	134
		(%)	11.2	44.0	24.6	20.1	-	-	100.0
Gallbladder	Male		-	-	1	-	-	-	1
	Female		1	2	1	4	-	-	8
	Total	(N)	1	2	2	4	-	-	9
		(%)	11.1	22.2	22.2	44.4	-	-	100.0
Pancreas	Male		-	2	4	4	-	-	10
	Female		2	2	2	8	-	-	14
	Total	(N)	2	4	6	12	-	-	24
		(%)	8.3	16.7	25.0	50.0	-	-	100.0
Other and ill-defined digestive organs	Male		-	-	-	-	-	-	-
	Female		-	-	1	-	-	-	1
	Total	(N)	-	-	1	-	-	-	1
		(%)	-	-	100.0	-	-	-	100.0
Nasal cavity & Sinuses	Male		-	2	4	3	-	1	10
	Female		-	3	1	-	-	-	-
	Total	(N)	-	5	5	3	-	1	14
		(%)	-	35.7	35.7	21.4	-	7.1	100.0
Larynx	Male		4	3	4	5	-	-	16
	Female		-	1	-	-	-	-	1
	Total	(N)	4	4	4	5	-	-	17
		(%)	23.5	23.5	23.5	29.4	-	-	100.0
Trachea, bronchus, lung	Male		12	12	33	85	-	-	142
	Female		8	8	4	50	-	-	70
	Total	(N)	20	20	37	135	-	-	212
		(%)	9.4	9.4	17.5	63.7	-	-	100.0

TABLE 24

NUMBER OF NEW CANCER PATIENTS STAGE AND GENDER: 2019

Site	Sex		Stage						
			I	II	III	IV	No stage	Unknown	Total
Thymus & heart, mediastinum, pleura	Male		1	-	4	2	-	-	7
	Female		-	-	-	2	-	-	2
	Total	(N)	1	-	4	4	-	-	9
		(%)	11.2	-	44.4	44.4	-	-	100.0
Bone & joints	Male		5	2	2	5	-	-	14
	Female		3	3	1	2	-	-	9
	Total	(N)	8	5	3	7	-	-	23
		(%)	34.8	21.7	13.0	30.4	-	-	100.0
Skin	Male		9	15	2	2	-	-	28
	Female		14	11	3	1	-	-	29
	Total	(N)	23	26	5	3	-	-	57
		(%)	40.4	45.6	8.8	5.3	-	-	100.0
Mesothelioma & Soft tissue	Male		1	5	6	1	-	1	14
	Female		2	5	1	2	-	0	10
	Total	(N)	3	10	7	3	-	1	24
		(%)	12.5	41.7	29.2	12.5	-	4.2	100.0
Breast	Male		2	0	0	1	-	-	3
	Female		56	75	43	32	-	-	206
	Total	(N)	58	75	43	33	-	-	209
		(%)	27.8	35.9	20.0	15.8	-	-	100.0
Genital organs	Male		-	-	-	-	-	-	-
	Female		2	2	-	-	-	-	4
	Total	(N)	2	2	-	-	-	-	4
		(%)	50.0	50.0	-	-	-	-	100.0
Cervix uteri	Male		-	-	-	-	-	-	-
	Female		17	21	13	8	-	-	59
	Total	(N)	17	21	13	8	-	-	59
		(%)	28.8	35.6	22.0	13.6	-	-	100.0
Corpus uteri	Male		-	-	-	-	-	-	-
	Female		19	3	12	2	-	-	36
	Total	(N)	19	3	12	2	-	-	36
		(%)	52.8	8.3	33.3	5.6	-	-	100.0
Uterus	Male		-	-	-	-	-	-	-
	Female		5	1	1	-	-	-	7
	Total	(N)	5	1	1	-	-	-	7
		(%)	71.4	14.3	14.3	-	-	-	100.0

TABLE 24 NUMBER OF NEW CANCER PATIENTS STAGE AND GENDER: 2019

Site	Sex		Stage						
			I	II	III	IV	No stage	Unknown	Total
Ovary	Male		-	-	-	-	-	-	-
	Female		14	8	7	9	-	-	38
	Total	(N)	14	8	7	9	-	-	38
		(%)	36.8	21.1	18.4	23.7	-	-	100.0
Penis	Male		-	-	2	-	-	-	2
	Female		-	-	-	-	-	-	-
	Total	(N)	-	-	2	-	-	-	2
		(%)	-	-	100.0	-	-	-	100.0
Prostate	Male		16	37	3	26	-	-	82
	Female		-	-	-	-	-	-	-
	Total	(N)	16	37	3	26	-	-	82
		(%)	19.5	45.1	3.7	31.7	-	-	100.0
Testis	Male		2	-	1	2	-	-	5
	Female		-	-	-	-	-	-	-
	Total	(N)	2	-	1	2	-	-	5
		(%)	40.0	-	20.0	40.0	-	-	100.0
Kidney and etc.	Male		7	5	6	9	-	-	27
	Female		3	4	4	2	-	-	13
	Total	(N)	10	9	10	11	-	-	40
		(%)	25.0	22.5	25.0	27.5	-	-	100.0
Bladder	Male		6	11	14	6	-	-	37
	Female		1	-	2	2	-	-	6
	Total	(N)	7	11	16	8	-	-	42
		(%)	16.7	26.2	38.1	19.0	-	-	100.0
Eye and Meninges	Male		1	-	-	-	-	-	1
	Female		-	-	-	-	-	1	1
	Total	(N)	1	-	-	-	-	1	2
		(%)	50.0	-	-	-	-	50.0	100.0
Brain	Male		-	-	-	-	8	-	8
	Female		-	-	-	-	10	-	10
	Total	(N)	-	-	-	-	18	-	18
		(%)	-	-	-	-	100.0	-	100.0
Thyroid gland	Male		6	7	3	3	-	-	19
	Female		23	50	5	5	-	-	83
	Total	(N)	29	57	8	8	-	-	102
		(%)	28.4	55.9	7.8	7.8	-	-	100.0

TABLE 24

NUMBER OF NEW CANCER PATIENTS STAGE AND GENDER: 2019

Site	Sex		Stage					
			I	II	III	IV	No stage	Unknown
Adrenal gland	Male		-	-	-	1	-	-
	Female		-	-	-	-	-	-
	Total	(N)	-	-	-	1	-	-
		(%)	-	-	-	100.0	-	-
Other sites	Male		1	-	1	1	-	-
	Female		-	-	-	-	-	-
	Total	(N)	1	-	1	1	-	-
		(%)	33.3	-	33.3	33.3	-	-
Without specification	Male		1	2	3	6	-	2
	Female		1	-	-	3	-	-
	Total	(N)	2	2	3	9	-	-
		(%)	11.1	11.1	16.7	50.0	-	-
Hodgkin's disease	Male		-	3	3	3	-	-
	Female		1	-	1	1	-	-
	Total	(N)	1	3	4	4	-	-
		(%)	8.3	25.0	33.3	33.3	-	-
Non-Hodgkin's lymphoma	Male		3	9	6	23	-	-
	Female		-	6	5	14	-	-
	Total	(N)	3	15	11	37	-	-
		(%)	4.5	22.7	16.7	56.1	-	-
Multiple myeloma	Male		1	1	15	-	-	-
	Female		-	3	6	1	1	-
	Total	(N)	1	4	21	1	1	-
		(%)	3.6	14.3	75.0	3.6	3.6	-
Leukaemia	Male		-	-	-	-	26	-
	Female		-	-	-	-	21	-
	Total	(N)	-	-	-	-	47	-
		(%)	-	-	-	-	100.0	-

DESCRIPTION OF THE LEADING SITES OF CANCERS

1. COLON & RECTUM

2. TRACHEA, BRONCHUS AND LUNG

3. BREAST

4. LIVER AND INTRAHEPATIC BILE DUCTS

5. THYROID

6. PROSTATE



1. COLON & RECTUM CANCER

TABLE 25 TREND OF COLON & RECTUM CANCER IN PHRAMONGKUTKLAO HOSPITAL : 2008 - 2019			
Years	Number of patients		Total
	Male	Female	
2008	85	70	155
2009	99	65	164
2010	111	76	187
2011	123	78	201
2012	146	78	224
2013	131	87	218
2014	130	87	217
2015	120	81	201
2016	140	88	228
2017	102	67	169
2018	104	56	160
2019	132	91	223

COLON & RECTUM

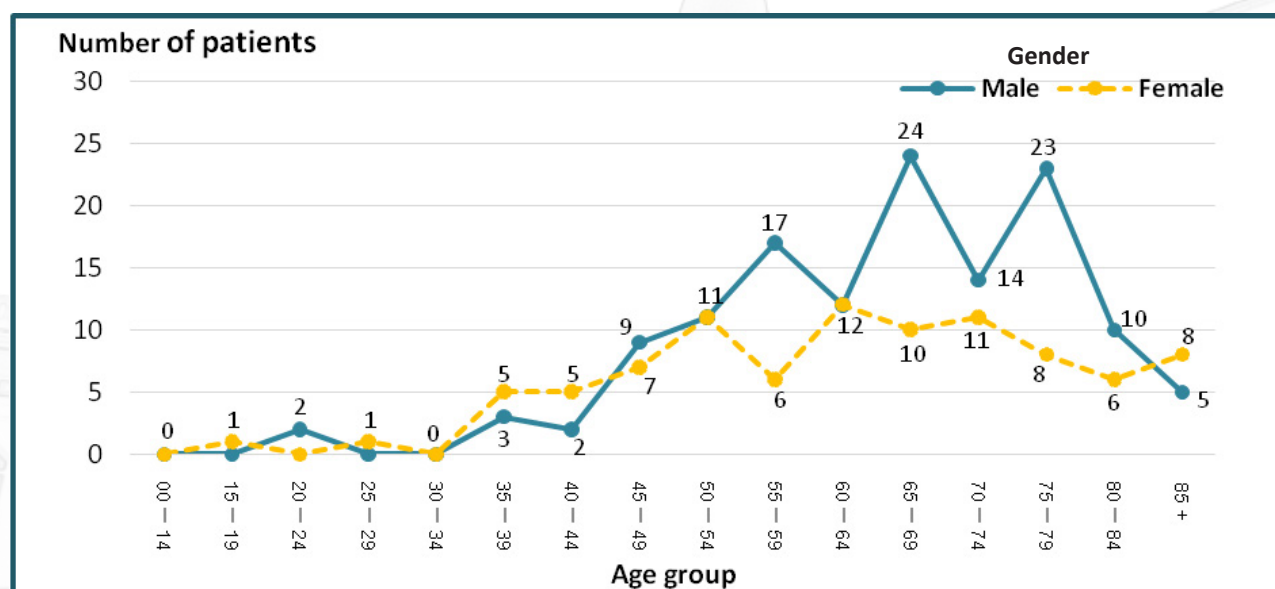
TABLE 26

DISTRIBUTION OF NEW COLON & RECTUM CANCER PATIENTS BY AGE GROUP AND GENDER : 2019

Age group	Male		Female		Total	
	Number	Percent	Number	Percent	Number	Percent
00 – 14	0	0	0	0	0	0
15 – 19	0	0	1	1.1	1	0.4
20 – 24	2	1.5	0	0	2	0.9
25 – 29	0	0	1	1.1	1	0.4
30 – 34	0	0	0	0	0	0
35 – 39	3	2.3	5	5.5	8	3.6
40 – 44	2	1.5	5	5.5	7	3.1
45 – 49	9	6.8	7	7.7	16	7.2
50 – 54	11	8.3	11	12.1	22	9.9
55 – 59	17	12.9	6	6.6	23	10.3
60 – 64	12	9.1	12	13.2	24	10.8
65 – 69	24	18.2	10	11.0	34	15.2
70 – 74	14	10.6	11	12.1	25	11.2
75 – 79	23	17.4	8	8.8	31	13.9
80 – 84	10	7.6	6	6.6	16	7.2
85 +	5	3.8	8	8.8	13	5.8
Total	132	100.0	91	100.0	223	100.0

Majority of cases.

FIGURE 14 : DISTRIBUTION OF NEW COLON & RECTUM CANCER PATIENTS BY AGE GROUP AND GENDER : 2019

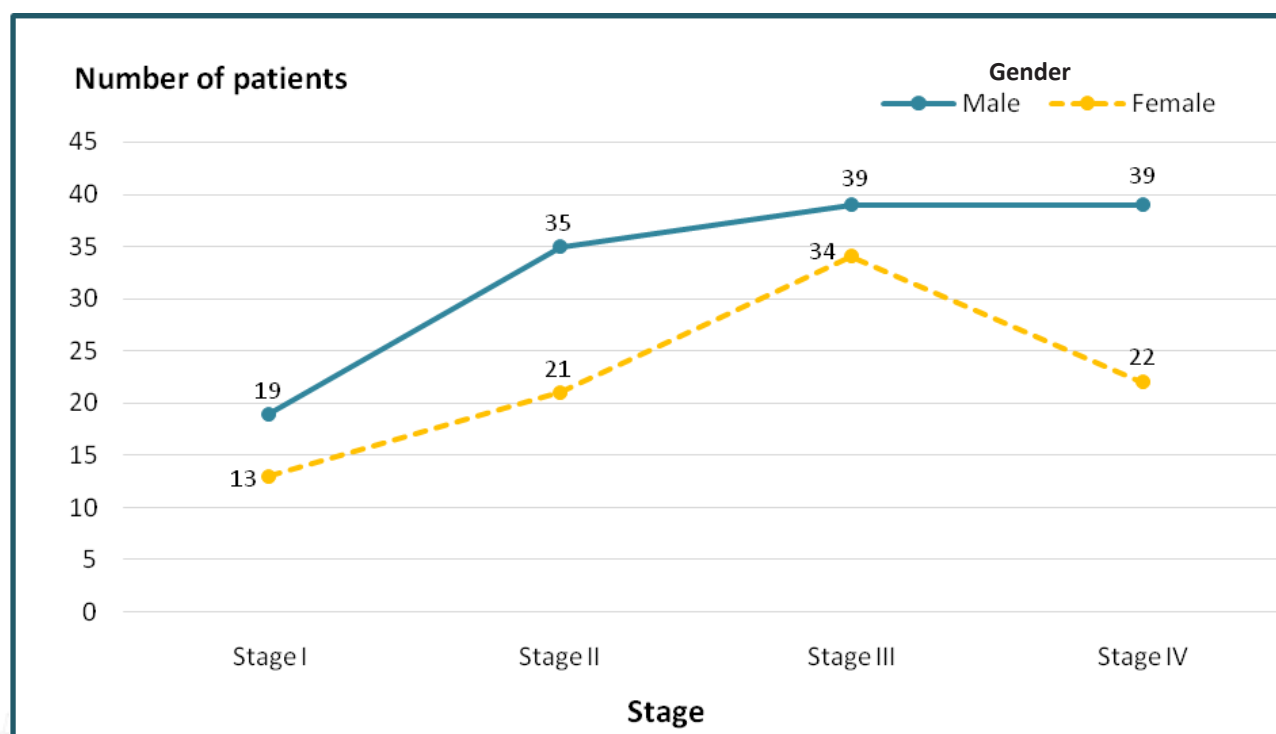




COLON & RECTUM

Stage of Trachea, Bronchus and Lung	Male		Female		Total	
	Number	Percent	Number	Percent	Number	Percent
Stage I	19	14.5	14	15.4	33	14.7
Stage II	35	26.5	21	23.1	56	25.2
Stage III	39	29.5	34	37.4	73	32.7
Stage IV	39	29.5	22	24.1	61	27.4
Total	132	100.0	91	100.0	223	100.0

FIGURE 15 : DISTRIBUTION OF NEW COLON & RECTUM CANCER PATIENTS BY STAGE AND GENDER : 2019

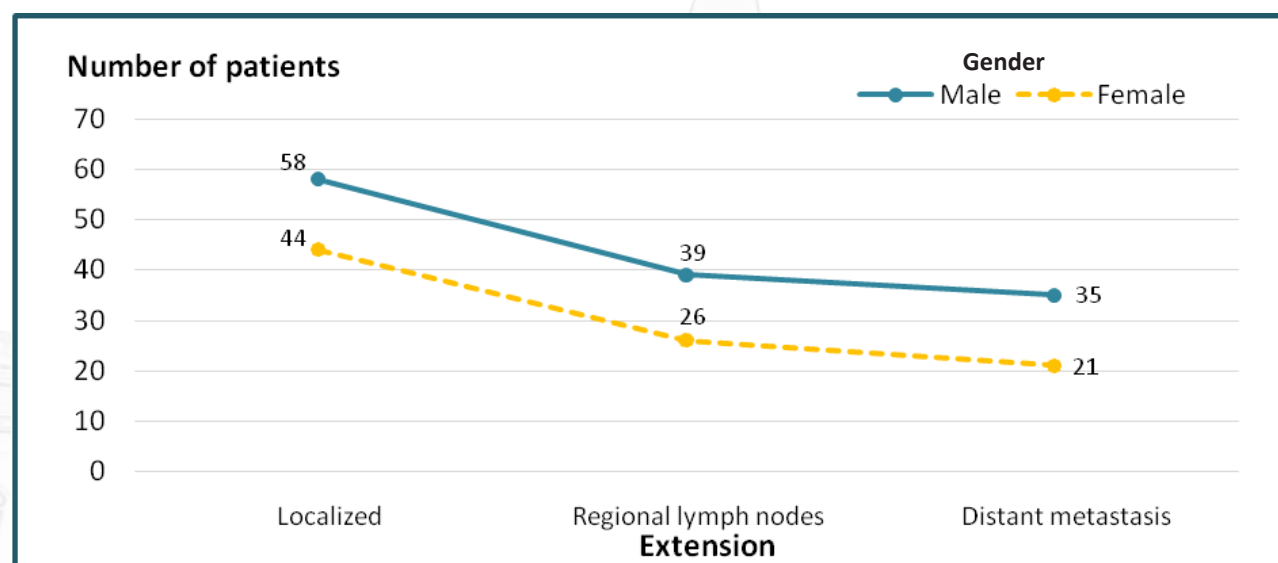


COLON & RECTUM
TABLE 28
DISTRIBUTION OF NEW COLON & RECTUM CANCER PATIENTS BY METHOD AND GENDER : 2019

Method of diagnosis	Male		Female		Total	
	Number	Percent	Number	Percent	Number	Percent
Histopathology or Cytology	130	98.5	88	96.7	218	97.8
Endoscopy & radiology	2	1.5	3	3.3	5	2.2
Total	132	100.0	91	100.0	223	100.0

TABLE 29
DISTRIBUTION OF NEW COLON & RECTUM CANCER PATIENTS BY EXTENSION AND GENDER : 2019

Extension	Male		Female		Total	
	Number	Percent	Number	Percent	Number	Percent
Localized	58	44.0	44	48.4	102	45.8
Regional lymph nodes	39	29.5	26	28.6	65	29.1
Distant metastasis	35	26.5	21	23.0	56	25.1
Total	132	100.0	91	100.0	223	100.0

FIGURE 16 : DISTRIBUTION OF NEW COLON & RECTUM CANCER PATIENTS BY EXTENSION AND GENDER : 2019




COLON & RECTUM

TABLE 30
DISTRIBUTION OF NEW COLON & RECTUM CANCER PATIENTS BY TREATMENT MODALITIES AND GENDER : 2019

Treatment modality	Male		Female		Total	
	Number	Percent	Number	Percent	Number	Percent
Surgery	44	33.3	36	39.5	80	35.9
Chemotherapy	30	22.7	22	24.2	52	23.4
Supportive	0	0	1	1.1	1	0.4
Surgery & Chemotherapy	37	28.0	21	23.1	58	26.0
Surgery & Radiotherapy	1	0.8	1	1.1	2	0.9
Radiotherapy & Chemotherapy	3	2.3	1	1.1	4	1.8
Surgery & Radiotherapy& Chemotherapy	2	1.5	0	0	2	0.9
Others	3	2.3	2	2.2	5	2.2
Counseling	12	9.1	7	7.7	19	8.5
Total	132	100.0	91	100.0	223	100.0

TABLE 31
DISTRIBUTION OF NEW COLON & RECTUM CANCER PATIENTS BY TREATMENT FOLLOW UP STATUS AND GENDER : 2019

Follow up status	Male		Female		Total	
	Number	Percent	Number	Percent	Number	Percent
Alive	130	98.5	89	97.8	219	98.2
Deaths	2	1.5	2	2.2	4	1.8
Total	132	100.0	91	100.0	223	100.0

Survey: 31 December 2019

2. TRACHEA, BRONCHUS AND LUNG CANCER

TABLE 32 TREND OF TRACHEA, BRONCHUS AND LUNG CANCER IN PHRAMONGKUTKLAO HOSPITAL : 2008 – 2019

Years	Number of patients		Total
	Male	Female	
2008	101	49	150
2009	114	58	172
2010	104	61	165
2011	142	68	210
2012	146	69	215
2013	145	75	220
2014	134	84	218
2015	115	65	180
2016	119	79	198
2017	118	73	191
2018	119	81	200
2019	142	70	212

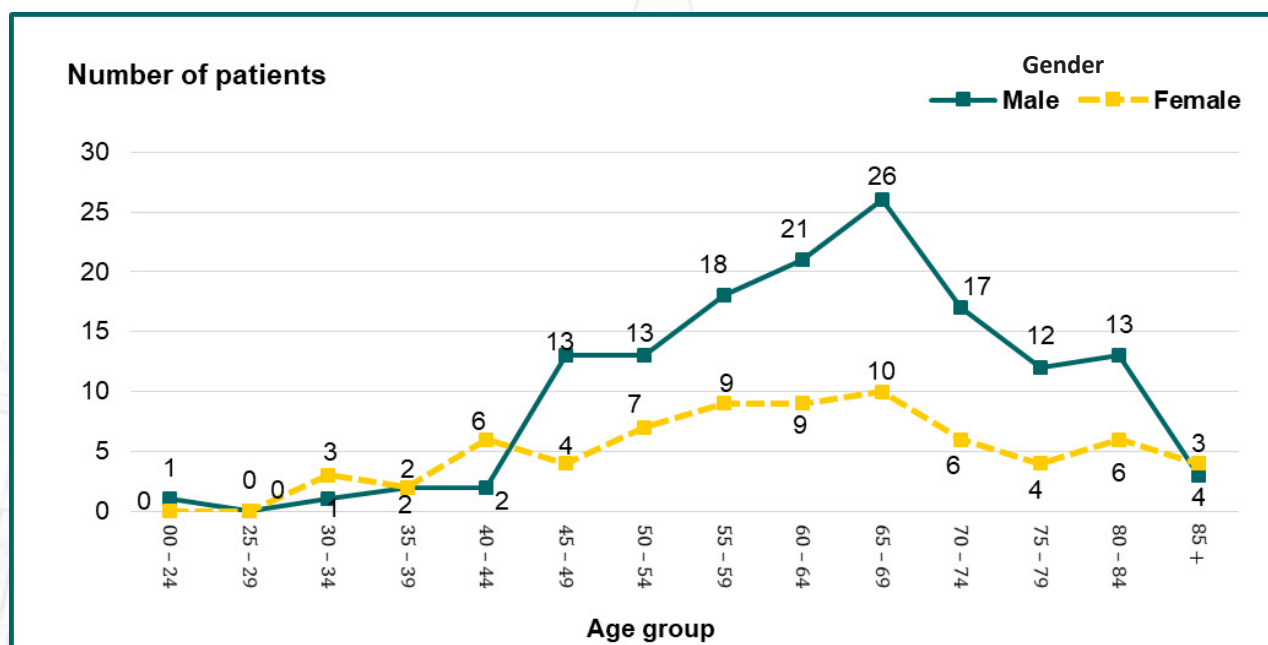
TRACHEA, BRONCHUS AND LUNG

TABLE 33

DISTRIBUTION OF NEW TRACHEA, BRONCHUS AND LUNG CANCER PATIENTS
BY AGE GROUP AND GENDER : 2019

Age group	Male		Female		Total	
	Number	Percent	Number	Percent	Number	Percent
00 – 24	1	0.7	0	0	1	0.5
25 – 29	0	0.0	0	0	0	0.0
30 – 34	1	0.7	3	4.3	4	1.9
35 – 39	2	1.4	2	2.9	4	1.9
40 – 44	2	1.4	6	8.6	8	3.8
45 – 49	13	9.2	4	5.7	17	8.0
50 – 54	13	9.2	7	10	20	9.4
55 – 59	18	12.7	9	12.9	27	12.7
60 – 64	21	14.8	9	12.9	30	14.2
65 – 69	26	18.3	10	14.3	36	17.0
70 – 74	17	12.0	6	8.6	23	10.8
75 – 79	12	8.5	4	5.7	16	7.5
80 – 84	13	9.2	6	8.6	19	9.0
85 +	3	2.1	4	5.7	7	3.3
Total	142	100.0	70	100.0	212	100.0

Majority of cases.

FIGURE 17 : DISTRIBUTION OF NEW TRACHEA, BRONCHUS AND LUNG CANCER PATIENTS
BY AGE GROUP AND GENDER : 2019

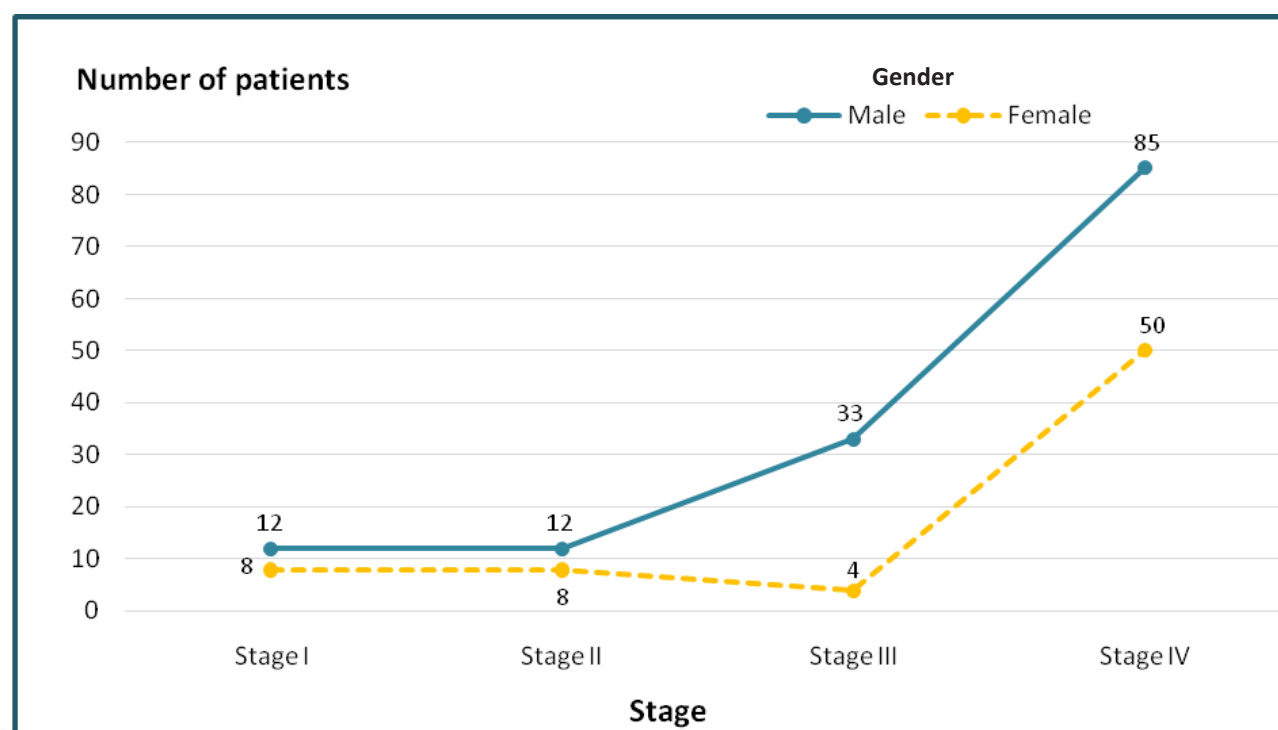
TRACHEA, BRONCHUS AND LUNG

TABLE 34

DISTRIBUTION OF NEW TRACHEA, BRONCHUS AND LUNG CANCER PATIENTS BY STAGE AND GENDER : 2019

Stage of Trachea, Bronchus and Lung	Male		Female		Total	
	Number	Percent	Number	Percent	Number	Percent
Stage I	12	8.5	8	11.4	20	9.4
Stage II	12	8.5	8	11.4	20	9.4
Stage III	33	23.1	4	5.7	37	17.5
Stage IV	85	59.9	50	71.5	135	63.7
Total	142	100.0	70	100.0	212	100.0

FIGURE 18 : DISTRIBUTION OF NEW TRACHEA, BRONCHUS AND LUNG CANCER PATIENTS BY STAGE AND GENDER : 2019





TRACHEA, BRONCHUS AND LUNG

TABLE 35

DISTRIBUTION OF NEW TRACHEA, BRONCHUS AND LUNG CANCER PATIENTS BY METHOD AND GENDER : 2019

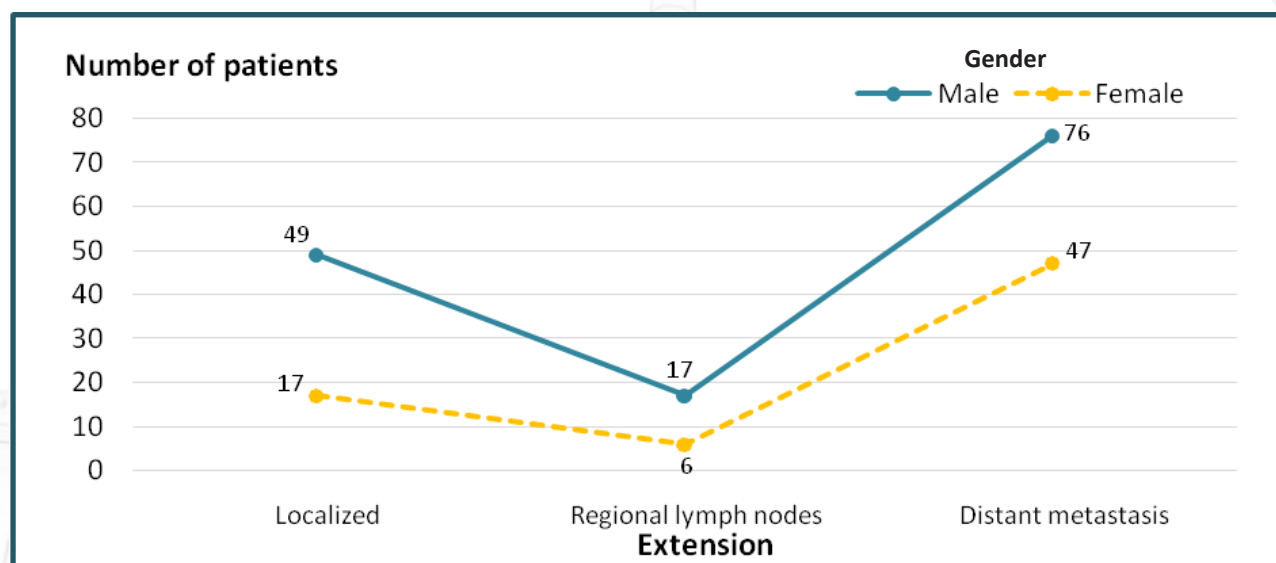
Method of diagnosis	Male		Female		Total	
	Number	Percent	Number	Percent	Number	Percent
Endoscopy & Radiology	7	4.9	5	7.1	12	5.7
Histopathology or Cytology	135	95.1	65	92.9	200	94.3
Total	142	100.0	70	100.0	212	100.0

TABLE 36

DISTRIBUTION OF NEW TRACHEA, BRONCHUS AND LUNG CANCER PATIENTS BY EXTENSION AND GENDER : 2019

Extension	Male		Female		Total	
	Number	Percent	Number	Percent	Number	Percent
Localized	49	34.5	17	24.3	66	31.1
Regional lymph nodes	17	12.0	6	8.6	23	10.8
Distant metastasis	76	53.5	47	67.1	123	58.1
Total	142	100.0	70	100.0	212	100.0

FIGURE 19 : DISTRIBUTION OF NEW TRACHEA, BRONCHUS AND LUNG CANCER PATIENTS BY EXTENSION AND GENDER : 2019



TRACHEA, BRONCHUS AND LUNG
TABLE 37
DISTRIBUTION OF NEW TRACHEA, BRONCHUS AND LUNG CANCER PATIENTS BY TREATMENT MODALITIES AND GENDER : 2019

Treatment modality	Male		Female		Total	
	Number	Percent	Number	Percent	Number	Percent
Chemotherapy	47	33.2	27	38.5	74	34.9
Surgery	25	17.6	20	28.6	45	21.2
Radiotherapy	4	2.8	2	2.9	6	2.8
Supportive	1	0.7	1	1.4	2	0.9
Surgery & Chemotherapy	8	5.6	2	2.9	10	4.7
Surgery & Radiotherapy	3	2.1	0	0	3	1.4
Radiotherapy & Chemotherapy	8	5.6	0	0	8	3.8
Chemotherapy & Immunotherapy	1	0.7	0	0	1	0.5
Surgery & Radiotherapy & Chemotherapy	1	0.7	0	0	1	0.5
Radiotherapy & Chemotherapy & Immunotherapy	1	0.7	0	0	1	0.5
Other	7	4.9	4	5.7	11	5.2
Counseling	36	25.4	14	20.0	50	23.6
Total	142	100.0	70	100.0	212	100.0

TABLE 38
DISTRIBUTION OF NEW TRACHEA, BRONCHUS AND LUNG CANCER PATIENTS BY TREATMENT FOLLOW UP STATUS AND GENDER : 2019

Follow up status	Male		Female		Total	
	Number	Percent	Number	Percent	Number	Percent
Alive	124	87.3	62	88.6	186	87.7
Deaths	18	12.7	8	11.4	26	12.3
Total	142	100.0	70	100.0	212	100.0

Survey: 31 December 2019



3. BREAST CANCER

TABLE 39 TREND OF BREAST CANCER IN PHRAMONGKUTKLAO HOSPITAL : 2008 - 2019

Years	Number of patients		Total
	Male	Female	
2008	3	198	201
2009	4	172	176
2010	2	221	223
2011	0	219	219
2012	1	291	292
2013	1	285	286
2014	0	261	261
2015	2	197	199
2016	2	198	200
2017	5	166	171
2018	4	180	184
2019	3	206	209

BREAST

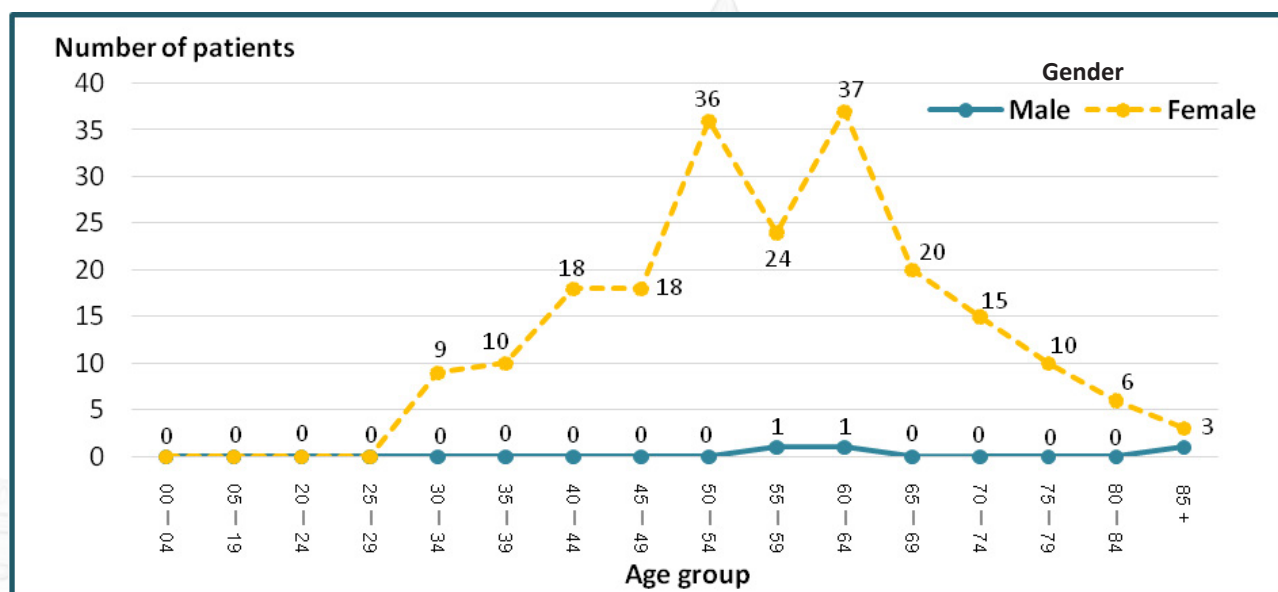
TABLE 40

DISTRIBUTION OF NEW BREAST CANCER PATIENTS BY AGE GROUP AND GENDER : 2019

Age group	Male		Female		Total	
	Number	Percent	Number	Percent	Number	Percent
00 – 29	0	0	0	0	0	0
30 – 34	0	0	9	4.4	9	4.3
35 – 39	0	0	10	4.9	10	4.8
40 – 44	0	0	18	8.7	18	8.6
45 – 49	0	0	18	8.7	18	8.6
50 – 54	0	0	36	17.5	36	17.2
55 – 59	1	33.3	24	11.7	25	12.0
60 – 64	1	33.3	37	18.0	38	18.2
65 – 69	0	0	20	9.7	20	9.6
70 – 74	0	0	15	7.3	15	7.2
75 – 79	0	0	10	4.9	10	4.8
80 – 84	0	0	6	2.9	6	2.9
85 +	1	33.3	3	1.5	4	1.9
Total	3	100.0	206	100.0	209	100.0

Majority of cases.

FIGURE 20 : DISTRIBUTION OF NEW BREAST CANCER PATIENTS BY AGE GROUP AND GENDER : 2019



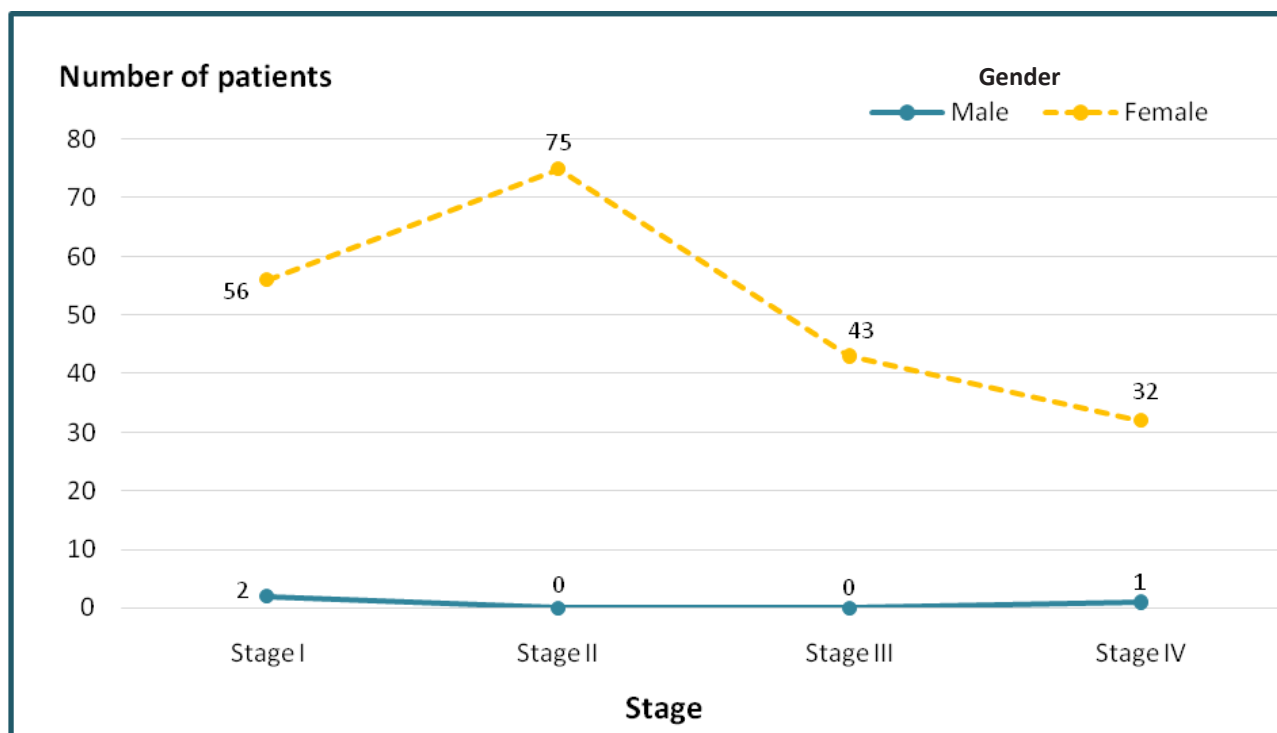


BREAST

TABLE 41 DISTRIBUTION OF NEW BREAST CANCER PATIENTS BY STAGE AND GENDER : 2019

Stage of Breast	Male		Female		Total	
	Number	Percent	Number	Percent	Number	Percent
Stage I	2	66.7	56	27.2	58	27.7
Stage II	0	0	75	36.4	75	35.9
Stage III	0	0	43	20.9	43	20.6
Stage IV	1	33.3	32	15.5	33	15.8
Total	3	100.0	206	100.0	209	100.0

FIGURE 21 : DISTRIBUTION OF BREAST CANCER PATIENTS BY STAGE AND GENDER : 2019



BREAST

TABLE 42

DISTRIBUTION OF NEW BREAST CANCER PATIENTS BY METHOD AND GENDER : 2019

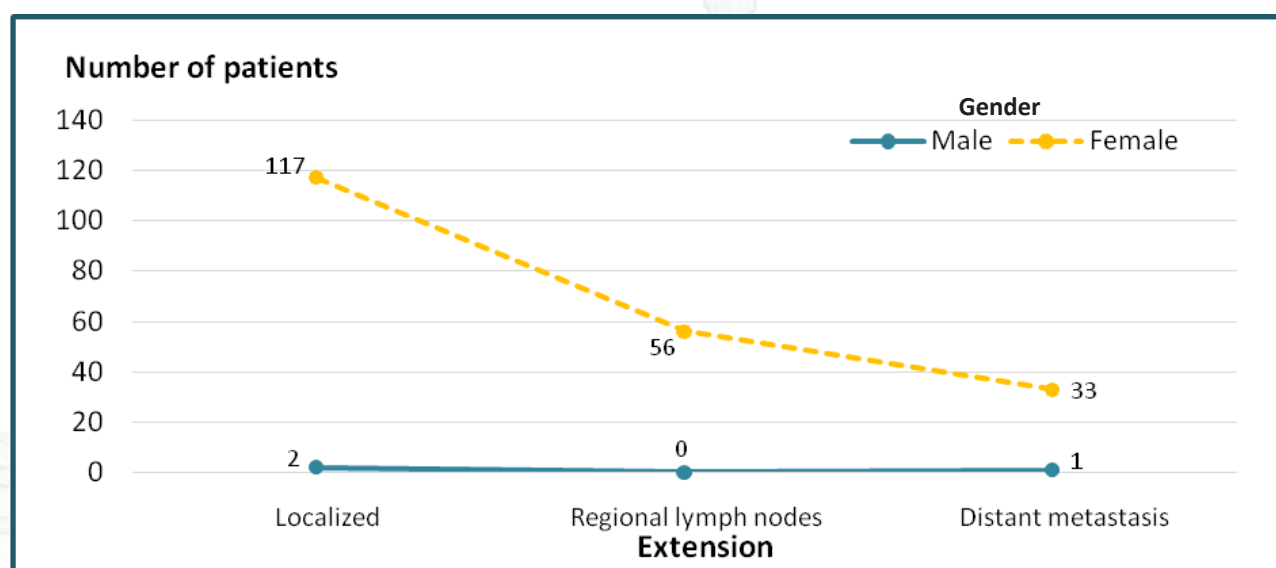
Method of diagnosis	Male		Female		Total	
	Number	Percent	Number	Percent	Number	Percent
Endoscopy & Radiology	0	0	2	1.0	2	1.0
Histopathology or Cytology	3	100.0	204	99.0	207	99.0
Total	3	100.0	206	100.0	209	100.0

TABLE 43

DISTRIBUTION OF NEW BREAST CANCER PATIENTS BY EXTENSION AND GENDER : 2019

Extension	Male		Female		Total	
	Number	Percent	Number	Percent	Number	Percent
Localized	2	66.7	117	55.8	119	56.9
Regional lymph nodes	0	0	56	27.2	56	26.8
Distant metastasis	1	33.3	33	16.0	34	16.3
Total	3	100.0	206	100.0	209	100.0

FIGURE 22 : DISTRIBUTION OF NEW BREAST CANCER PATIENTS BY EXTENSION AND GENDER : 2019





BREAST

TABLE 44

DISTRIBUTION OF BREAST CANCER PATIENTS BY TREATMENT MODALITIES AND GENDER : 2019

Treatment modality	Male		Female		Total	
	Number	Percent	Number	Percent	Number	Percent
Chemotherapy	0	0	57	27.5	57	27.2
Surgery	2	66.7	75	36.4	77	36.8
Radiotherapy	0	0	1	0.5	1	0.5
Hormone	0	0	1	0.5	1	0.5
Surgery & Chemotherapy	0	0	40	19.4	40	19.1
Surgery & Radiotherapy	0	0	1	0.5	1	0.5
Surgery & Hormone	0	0	1	0.5	1	0.5
Radiotherapy & Chemotherapy	0	0	4	1.9	4	1.9
Chemotherapy & Hormone	0	0	1	0.5	1	0.5
Chemotherapy & Immunotherapy	0	0	1	0.5	1	0.5
Surgery & Radiotherapy & Chemotherapy	0	0	2	1.0	2	1.0
Surgery & Chemotherapy & Hormone	0	0	1	0.5	1	0.5
Surgery & Chemotherapy & Immunotherapy	0	0	3	1.5	3	1.4
Others	0	0	1	0.5	1	0.5
Counseling	1	33.3	17	8.3	18	8.6
Total	3	100.0	206	100.0	209	100.0

TABLE 45

DISTRIBUTION OF NEW COLON & RECTUM CANCER PATIENTS BY FOLLOW UP STATUS AND GENDER: 2018

Follow up status	Male		Female		Total	
	Number	Percent	Number	Percent	Number	Percent
Alive	103	99.0	56	100.0	159	99.4
Deaths	1	1.0	0	0	1	0.6
Total	104	100.0	56	100.0	160	100.0

Survey: 31 December 2019

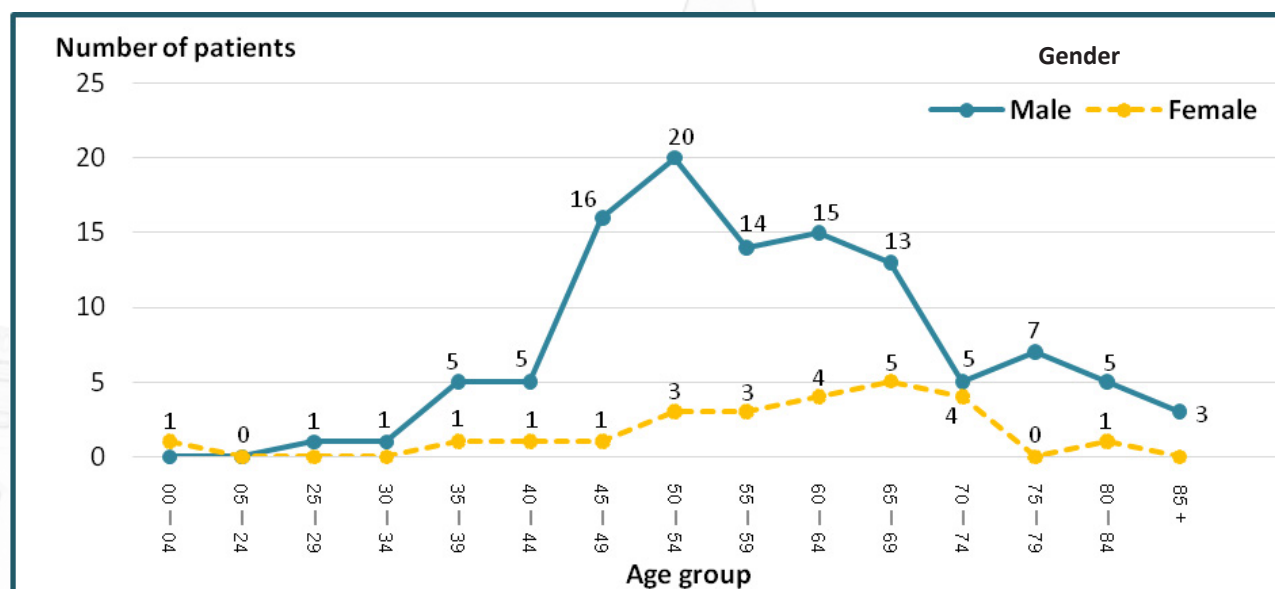
4. LIVER AND INTRAHEPATIC BILE DUCTS CANCER

TABLE 46

DISTRIBUTION OF NEW LIVER AND INTRAHEPATIC BILE DUCTS CANCER PATIENTS BY AGE GROUP AND GENDER : 2019

Age group	Male		Female		Total	
	Number	Percent	Number	Percent	Number	Percent
00 – 04	0	0	1	4.2	1	0.7
05 – 24	0	0	0	0	0	0
25 – 29	1	0.9	0	0	1	0.7
30 – 34	1	0.9	0	0	1	0.7
35 – 39	5	4.5	1	4.2	6	4.5
40 – 44	5	4.5	1	4.2	6	4.5
45 – 49	16	14.5	1	4.2	17	12.7
50 – 54	20	18.2	3	12.5	23	17.2
55 – 59	14	12.7	3	12.5	17	12.7
60 – 64	15	13.6	4	16.7	19	14.2
65 – 69	13	11.8	5	20.8	18	13.4
70 – 74	5	4.5	4	16.7	9	6.7
75 – 79	7	6.4	0	0	7	5.2
80 – 84	5	4.5	1	4.2	6	4.5
85 +	3	2.7	0	0	3	2.2
Total	110	100.0	24	100.0	134	100.0

Majority of case.

FIGURE 23 : DISTRIBUTION OF NEW LIVER AND INTRAHEPATIC BILE DUCTS CANCER PATIENTS BY AGE GROUP AND GENDER : 2019




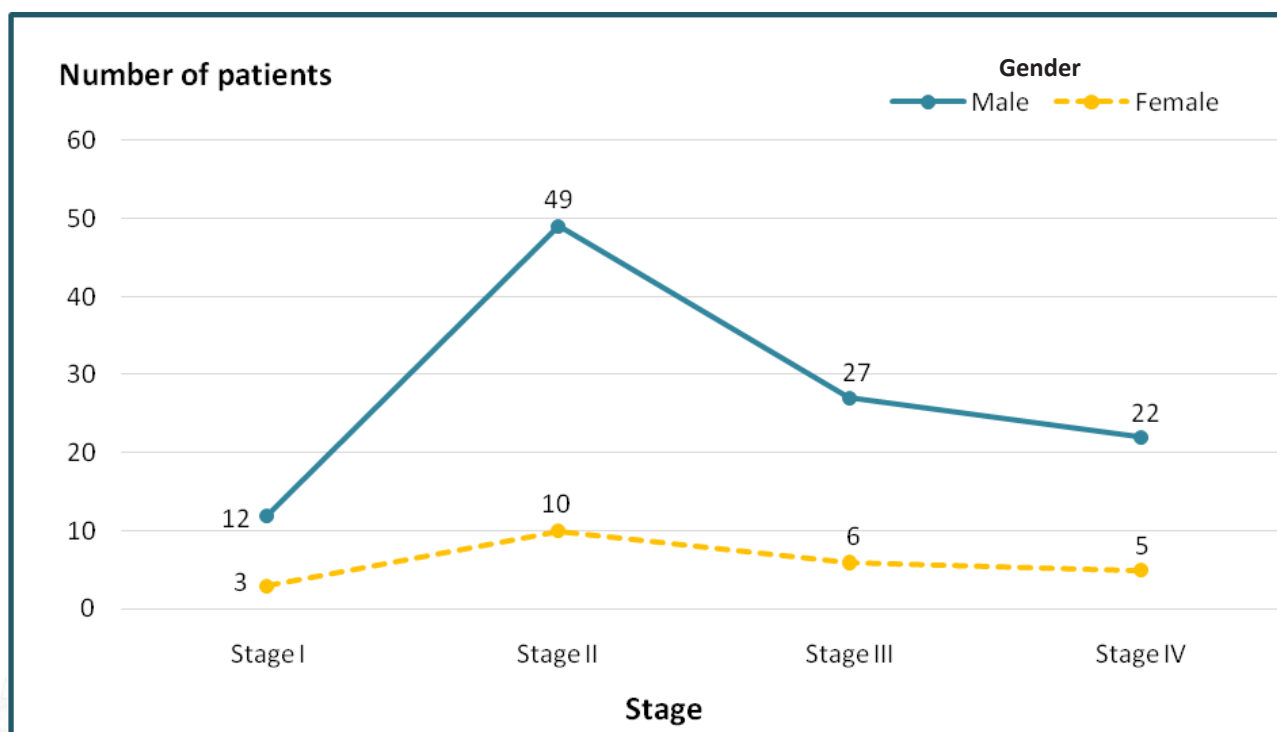
LIVER AND INTRAHEPATIC BILE DUCTS

TABLE 47

DISTRIBUTION OF NEW LIVER AND INTRAHEPATIC BILE DUCTS CANCER PATIENTS BY STAGE AND GENDER : 2019

Stage	Male		Female		Total	
	Number	Percent	Number	Percent	Number	Percent
Stage I	12	10.9	3	12.5	15	11.2
Stage II	49	44.6	10	41.7	59	44.1
Stage III	27	24.5	6	25.0	33	24.6
Stage IV	22	20.0	5	20.8	27	20.1
Total	110	100.0	24	100.0	134	100.0

FIGURE 24 : DISTRIBUTION OF NEW LIVER AND INTRAHEPATIC BILE DUCTS CANCER PATIENTS BY STAGE AND GENDER : 2019

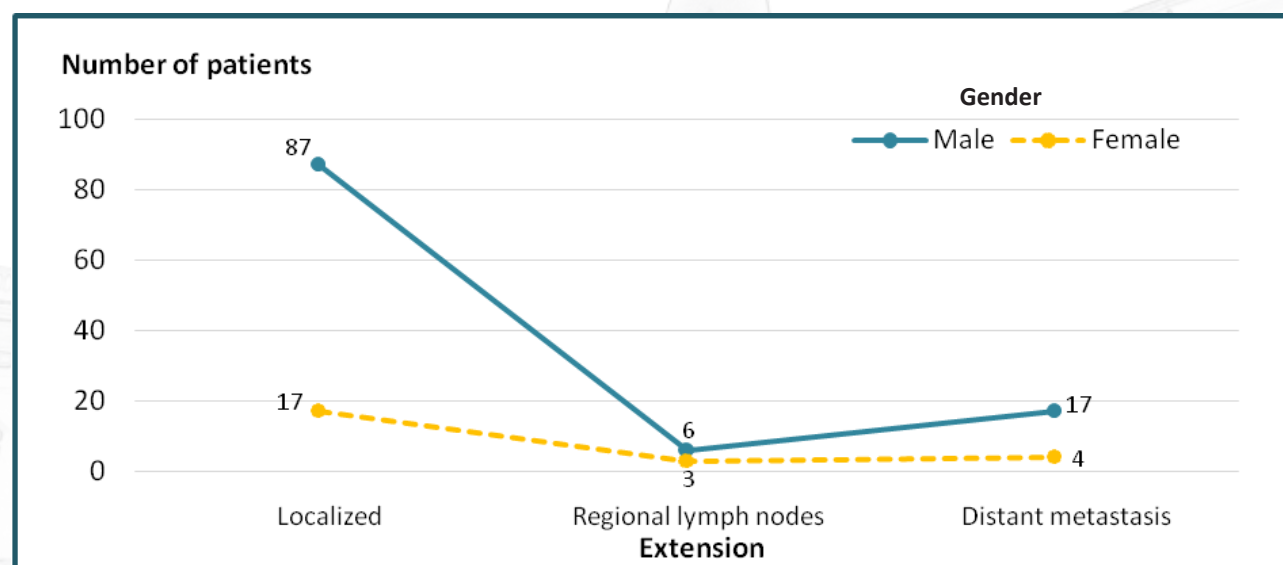


LIVER AND INTRAHEPATIC BILE DUCTS
TABLE 48
DISTRIBUTION OF NEW LIVER AND INTRAHEPATIC BILE DUCTS CANCER PATIENTS BY METHOD AND GENDER : 2019

Method of diagnosis	Male		Female		Total	
	Number	Percent	Number	Percent	Number	Percent
Endoscopy & Radiology	14	12.7	1	4.2	15	11.2
Histopathology or Cytology	34	30.9	11	45.8	45	33.6
Tumor marker	62	56.4	12	50.0	74	55.2
Total	110	100.0	24	100.0	134	100.0

TABLE 49
DISTRIBUTION OF NEW LIVER AND INTRAHEPATIC BILE DUCTS CANCER PATIENTS BY EXTENSION AND GENDER : 2019

Extension	Male		Female		Total	
	Number	Percent	Number	Percent	Number	Percent
Localized	87	79.0	17	70.8	104	77.6
Regional lymph nodes	6	5.5	3	12.5	9	6.7
Distant metastasis	17	15.5	4	16.7	21	15.7
Total	110	100.0	24	100.0	134	100.0

FIGURE 25 : DISTRIBUTION OF NEW LIVER AND INTRAHEPATIC BILE DUCTS CANCER PATIENTS BY EXTENSION AND GENDER : 2019




LIVER AND INTRAHEPATIC BILE DUCTS

TABLE 50
DISTRIBUTION OF NEW LIVER AND INTRAHEPATIC BILE DUCTS CANCER PATIENTS BY TREATMENT MODALITIES AND GENDER : 2019

Treatment modality	Male		Female		Total	
	Number	Percent	Number	Percent	Number	Percent
Chemotherapy	48	43.8	9	37.5	57	42.8
Surgery	18	16.4	6	25.0	24	17.9
Interventional	14	12.7	2	8.3	16	11.9
Supportive	2	1.8	1	4.2	3	2.2
Surgery & Chemotherapy	4	3.6	0	0	4	3.0
Surgery & Interventional	1	0.9	0	0	1	0.7
Radiotherapy & Chemotherapy	1	0.9	0	0	1	0.7
Chemotherapy & Immunotherapy	0	0	1	4.2	1	0.7
Chemotherapy & Interventional	4	3.6	2	8.3	6	4.5
Surgery & Chemotherapy & Interventional	1	0.9	0	0	1	0.7
Surgery & Radiotherapy & Chemotherapy & Interventional	1	0.9	0	0	1	0.7
Others	5	4.5	2	8.3	7	5.2
Counseling	11	10.0	1	4.2	12	9.0
Total	110	100.0	24	100.0	134	100.0

TABLE 51
DISTRIBUTION OF NEW LIVER AND INTRAHEPATIC BILE DUCTS CANCER PATIENTS BY FOLLOW UP STATUS AND GENDER : 2019

Follow up status	Male		Female		Total	
	Number	Percent	Number	Percent	Number	Percent
Alive	100	90.9	23	95.8	123	91.8
Deaths	10	9.1	1	4.2	11	8.2
Total	110	100.0	24	100.0	134	100.0

Survey: 31 December 2019

5. THYROID CANCER

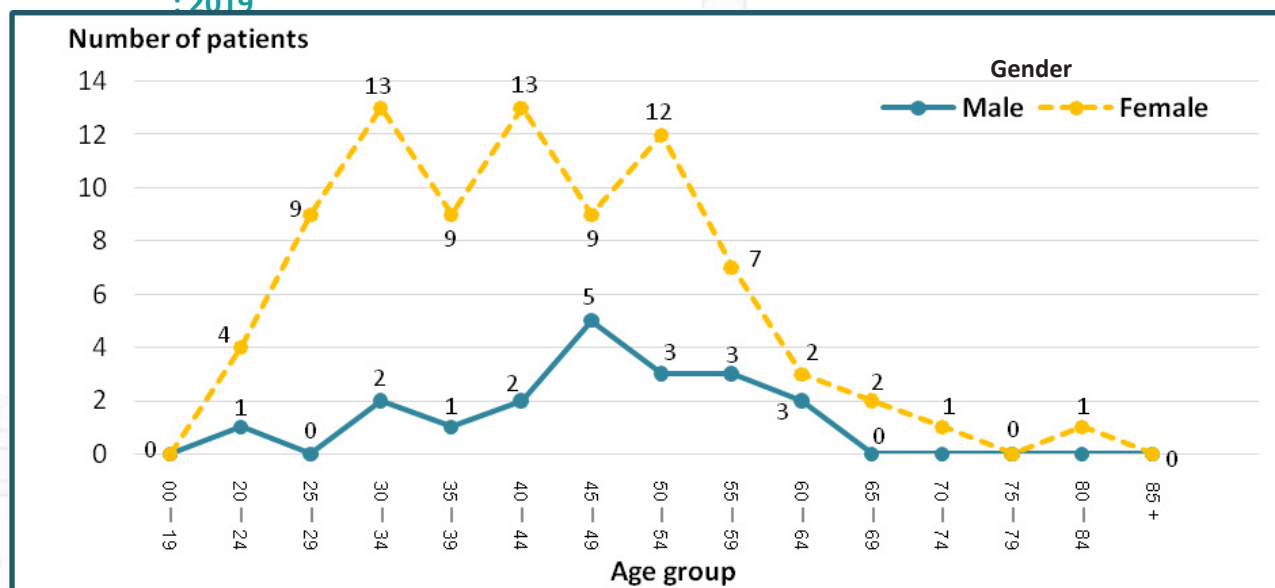
TABLE 52

DISTRIBUTION OF NEW THYROID CANCER PATIENTS BY AGE GROUP AND GENDER : 2019

Age group	Male		Female		Total	
	Number	Percent	Number	Percent	Number	Percent
00 – 19	0	0	0	0	0	0
20 – 24	1	5.3	4	4.8	5	4.9
25 – 29	0	0	9	10.8	9	8.8
30 – 34	2	10.5	13	15.7	15	14.7
35 – 39	1	5.3	9	10.8	10	9.8
40 – 44	2	10.5	13	15.7	15	14.7
45 – 49	5	26.3	9	10.8	14	13.7
50 – 54	3	15.8	12	14.5	15	14.7
55 – 59	3	15.8	7	8.4	10	9.8
60 – 64	2	10.5	3	3.6	5	4.9
65 – 69	0	0	2	2.4	2	2.0
70 – 74	0	0	1	1.2	1	1.0
75 – 79	0	0	0	0	0	0
80 – 84	0	0	1	1.2	1	1.0
85 +	0	0	0	0	0	0
Total	19	100.0	83	100.0	102	100.0

Majority of cases.

FIGURE 26 : DISTRIBUTION OF NEW THYROID CANCER PATIENTS BY AGE GROUP AND GENDER : 2019





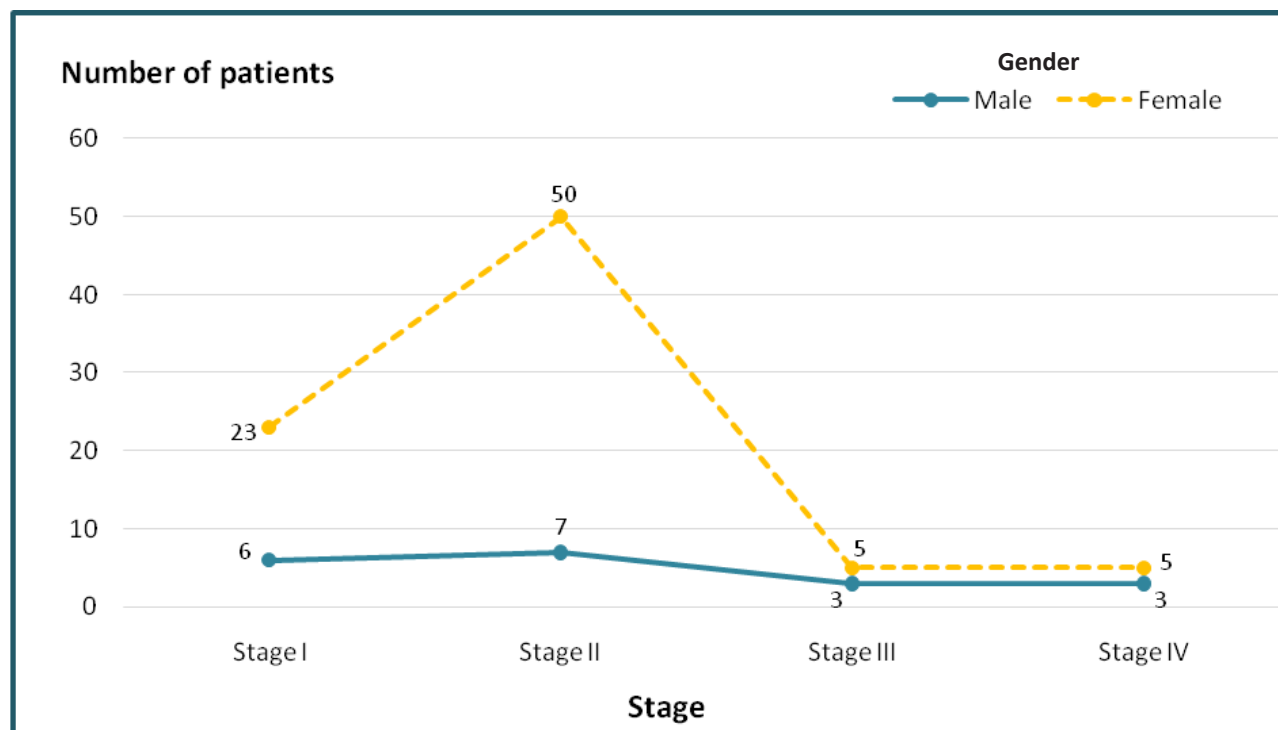
THYROID

TABLE 53

DISTRIBUTION OF NEW THYROID CANCER PATIENTS BY STAGE AND GENDER : 2019

Stage of Thyroid	Male		Female		Total	
	Number	Percent	Number	Percent	Number	Percent
Stage I	6	31.6	23	27.7	29	28.5
Stage II	7	36.8	50	60.3	57	55.9
Stage III	3	15.8	5	6.0	8	7.8
Stage IV	3	15.8	5	6.0	8	7.8
Total	19	100.0	83	100.0	102	100.0

FIGURE 27 : DISTRIBUTION OF NEW THYROID CANCER PATIENTS BY STAGE AND GENDER : 2019

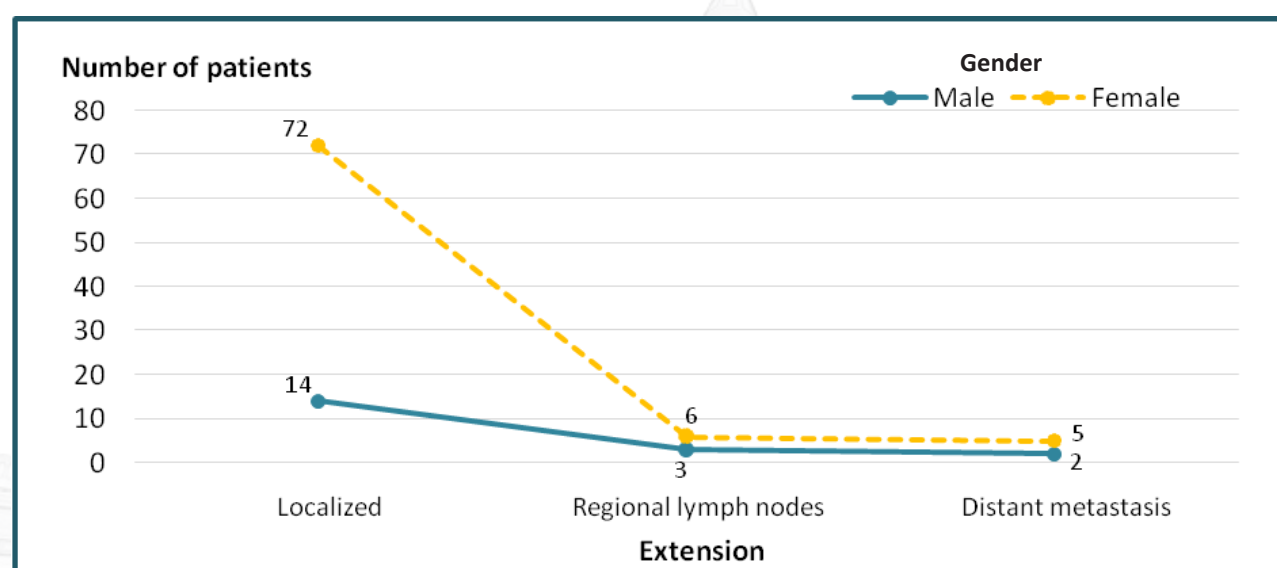


THYROID
TABLE 54
DISTRIBUTION OF THYROID CANCER PATIENTS BY METHOD AND GENDER : 2019

Method of diagnosis	Male		Female		Total	
	Number	Percent	Number	Percent	Number	Percent
Histopathology or Cytology	19	100.0	83	100.0	102	100.0
Total	19	100.0	83	100.0	102	100.0

TABLE 55
DISTRIBUTION OF THYROID CANCER PATIENTS BY EXTENSION AND GENDER : 2019

Extension	Male		Female		Total	
	Number	Percent	Number	Percent	Number	Percent
Localized	14	73.7	72	86.7	86	84.3
Regional lymph nodes	3	15.8	6	7.3	9	8.8
Distant metastasis	2	10.5	5	6.0	7	6.9
Total	19	100.0	83	100.0	102	100.0

FIGURE 28 : DISTRIBUTION OF NEW THYROID CANCER PATIENTS BY EXTENSION AND GENDER : 2019




THYROID

TABLE 56

DISTRIBUTION OF NEW THYROID CANCER PATIENTS BY TREATMENT MODALITIES AND GENDER : 2019

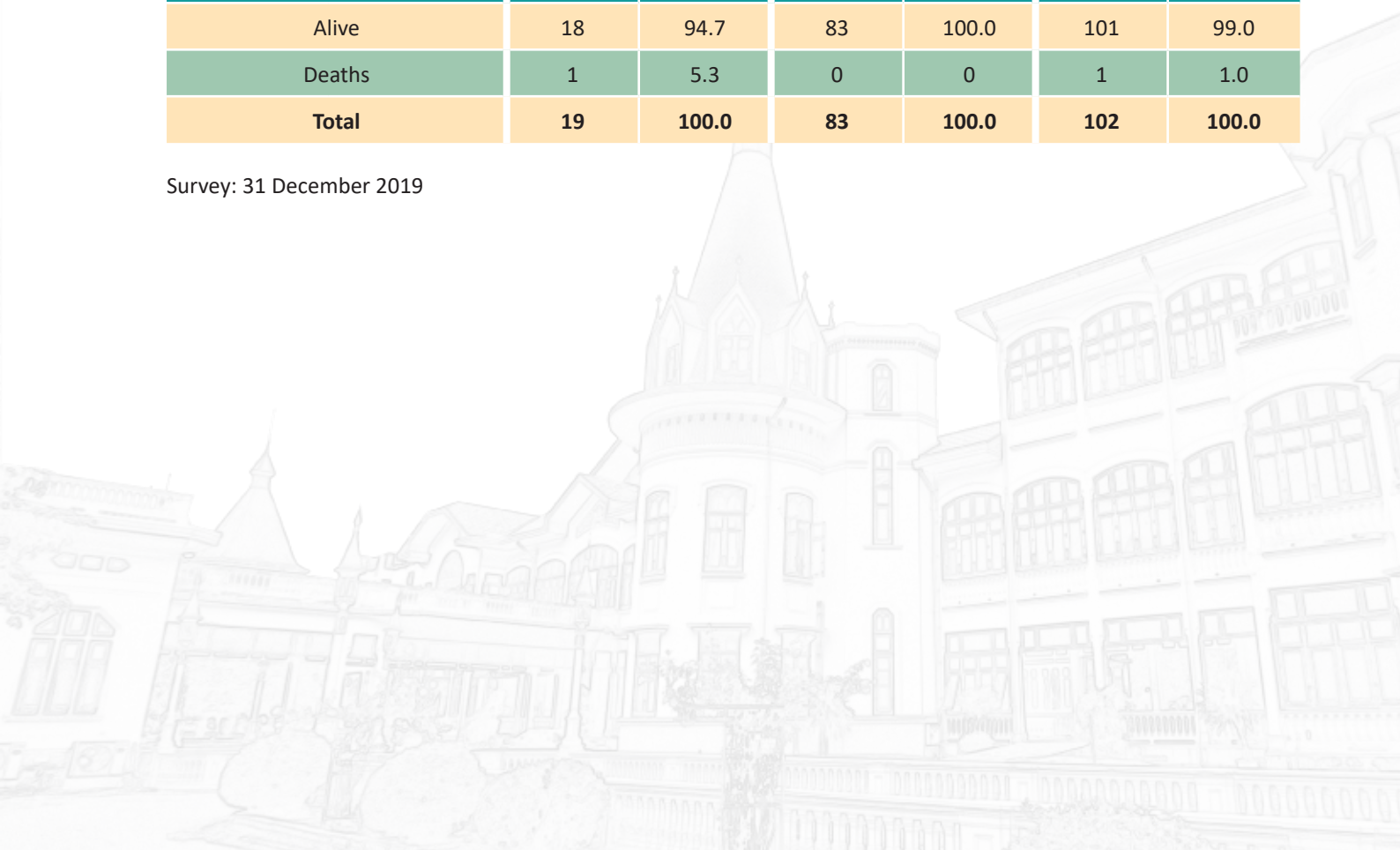
Treatment modality	Male		Female		Total	
	Number	Percent	Number	Percent	Number	Percent
Chemotherapy	2	10.5	0	0	2	2.0
Surgery	1	5.3	13	15.7	14	13.7
Radiation	9	47.3	48	57.8	57	55.9
Surgery & Radiation	5	26.3	18	21.7	23	22.5
Others	1	5.3	0	0	1	1.0
Counseling	1	5.3	4	4.8	5	4.9
Total	19	100.0	83	100.0	102	100.0

TABLE 57

DISTRIBUTION OF NEW THYROID CANCER PATIENTS BY FOLLOW UP STATUS AND GENDER : 2019

Follow up status	Male		Female		Total	
	Number	Percent	Number	Percent	Number	Percent
Alive	18	94.7	83	100.0	101	99.0
Deaths	1	5.3	0	0	1	1.0
Total	19	100.0	83	100.0	102	100.0

Survey: 31 December 2019



6. PROSTATE CANCER

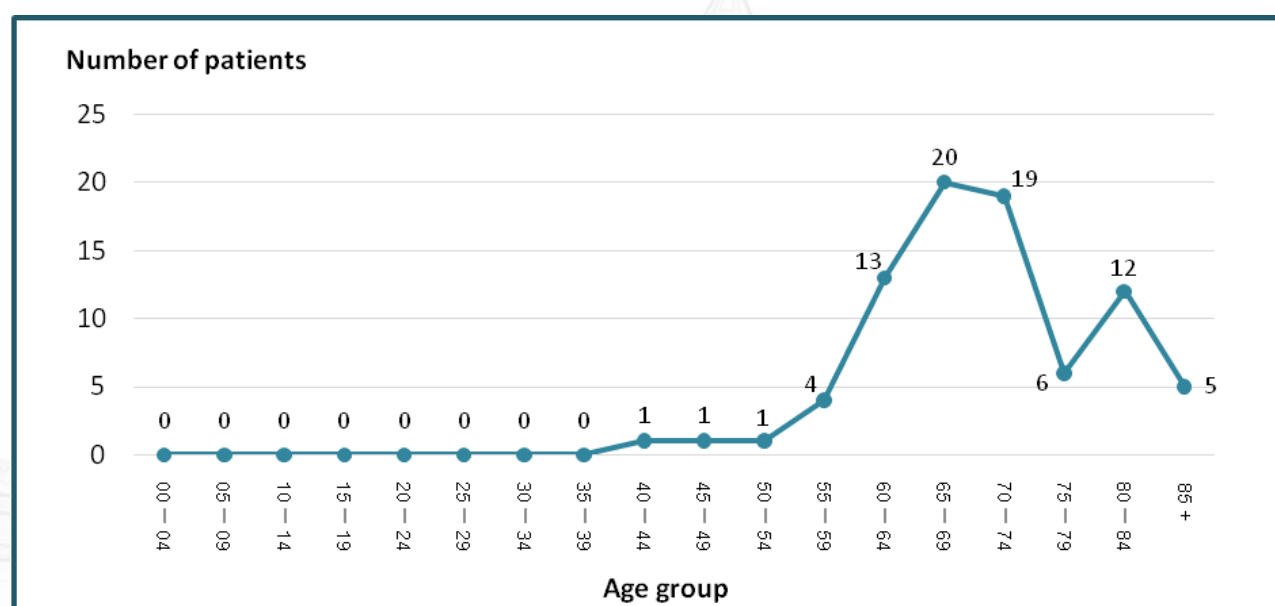
TABLE 58

DISTRIBUTION OF NEW PROSTATE CANCER PATIENTS BY AGE GROUP IN MALE : 2019

Age group	Male		Total	
	Number	Percent	Number	Percent
00 – 39	0	0	0	0
40 – 44	1	1.2	1	1.2
45 – 49	1	1.2	1	1.2
50 – 54	1	1.2	1	1.2
55 – 59	4	4.9	4	4.9
60 – 64	13	15.9	13	15.9
65 – 69	20	24.4	20	24.4
70 – 74	19	23.2	19	23.2
75 – 79	6	7.3	6	7.3
80 – 84	12	14.6	12	14.6
85 +	5	6.1	5	6.1
Total	82	100.0	82	100.0

Majority of cases.

FIGURE 29 : DISTRIBUTION OF NEW PROSTATE CANCER PATIENTS BY AGE GROUP IN MALE : 2019

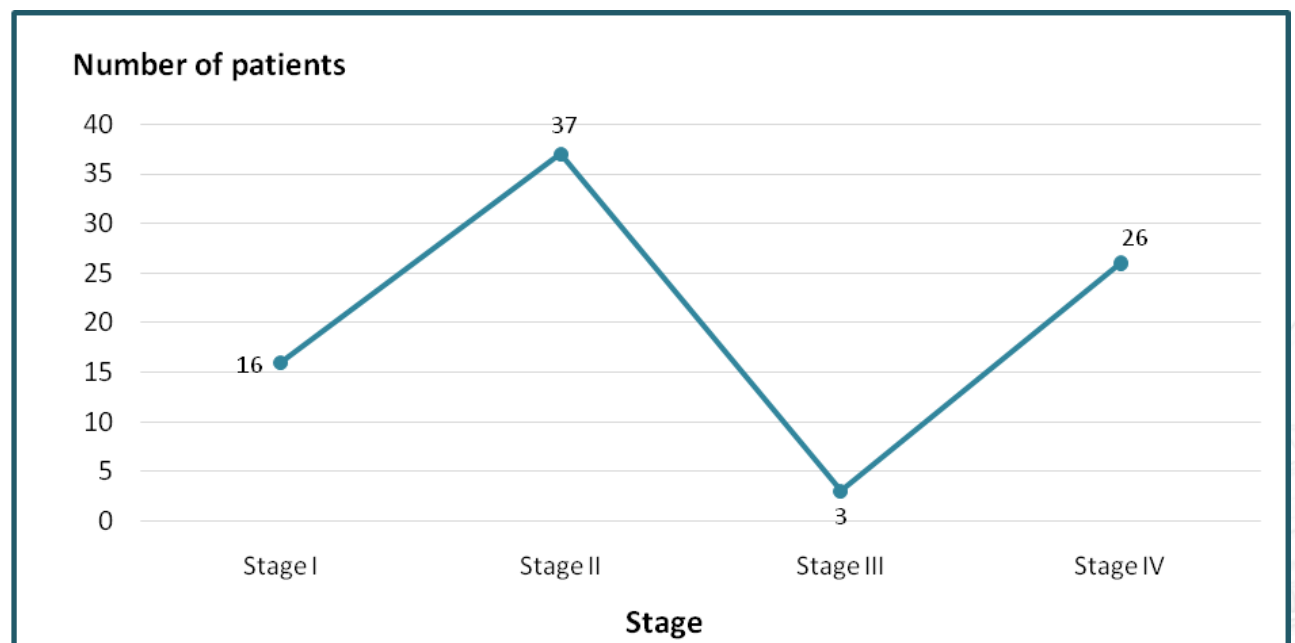




PROSTATE

Stage of Prostate	Male		Total	
	Number	Percent	Number	Percent
Stage I	16	19.5	16	19.5
Stage II	37	45.1	37	45.1
Stage III	3	3.7	3	3.7
Stage IV	26	31.7	26	31.7
Total	82	100.0	82	100.0

FIGURE 30 : DISTRIBUTION OF NEW PROSTATE CANCER PATIENTS BY STAGE IN MALE : 2019

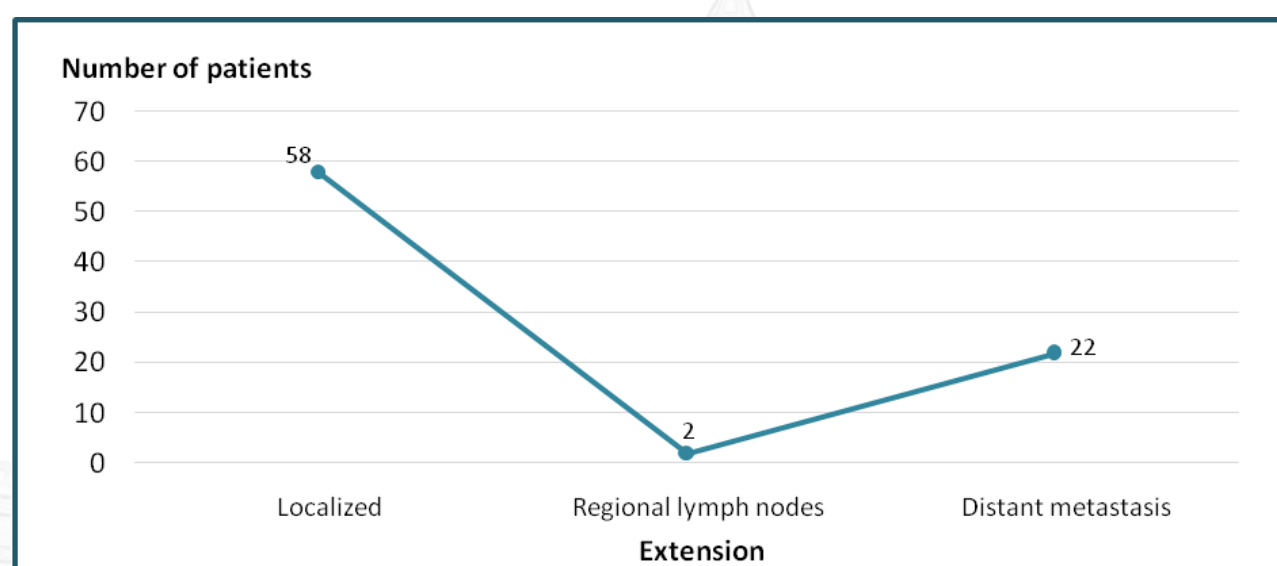


PROSTATE
TABLE 60
DISTRIBUTION OF NEW PROSTATE CANCER PATIENTS BY METHOD IN MALE : 2019

Method of diagnosis	Male		Total	
	Number	Percent	Number	Percent
Histopathology or Cytology	82	100.0	82	100.0
Total	82	100.0	82	100.0

TABLE 61
DISTRIBUTION OF NEW PROSTATE CANCER PATIENTS BY EXTENSION IN MALE : 2019

Extension	Male		Total	
	Number	Percent	Number	Percent
Localized	58	70.7	58	70.7
Regional lymph nodes	2	2.5	2	2.5
Distant metastasis	22	26.8	22	26.8
Total	82	100.0	82	100.0

FIGURE 31 : DISTRIBUTION OF NEW PROSTATE CANCER PATIENTS BY EXTENSION IN MALE : 2019




PROSTATE

TABLE 62

DISTRIBUTION OF NEW PROSTATE CANCER PATIENTS BY TREATMENT MODALITIES IN MALE: 2019

Treatment modality	Male		Total	
	Number	Percent	Number	Percent
Surgery	37	45.3	37	45.3
Radiotherapy	5	6.1	5	6.1
Chemotherapy	1	1.2	1	1.2
Hormone	1	1.2	1	1.2
Surgery & Radiotherapy	2	2.4	2	2.4
Surgery & Chemotherapy	2	2.4	2	2.4
Others	6	7.3	6	7.3
Counseling	28	34.1	28	34.1
Total	82	100.0	82	100.0

TABLE 63

DISTRIBUTION OF NEW PROSTATE CANCER PATIENTS BY FOLLOW UP STATUS IN MALE: 2019

Follow up status	Male		Total	
	Number	Percent	Number	Percent
Alive	80	97.6	80	97.6
Deaths	2	2.4	2	2.4
Total	82	100.0	82	100.0

Survey: 31 December 2019

● MALE ●

TABLE 64 DISTRIBUTION OF NEW CANCER IN MALE BY AGE - GROUP : 2019

ICD_10	Site	Age Total	00	05	10	15	20	25	30	35	40	45	50	55	60	65	70	75	80	85+
			- 04	- 09	- 14	- 19	- 24	- 29	- 34	- 39	- 44	- 49	- 54	- 59	- 64	- 69	- 74	- 79	- 84	
C00-C08	Oral cavity	21	0	0	0	0	1	0	0	3	0	1	3	1	6	3	3	0	0	0
C01,C05,C10	Oropharynx	14	0	0	0	0	0	0	0	0	0	3	1	2	3	2	2	1	0	0
C09	Tonsil	5	0	0	0	0	0	0	0	0	0	2	0	0	2	1	0	0	0	0
C11	Nasopharynx	10	0	0	0	0	0	0	0	0	1	4	1	1	1	1	1	0	0	0
C12-C13	Hypopharynx	14	0	0	0	0	0	0	0	0	2	1	0	6	3	0	2	0	0	0
C14	Pharynx	2	0	0	0	0	0	0	0	0	0	0	1	0	0	1	0	0	0	0
C15	Esophagus	23	0	0	0	0	0	0	0	0	0	2	2	5	9	3	1	1	0	0
C16	Stomach	11	0	0	0	0	0	0	0	0	0	0	1	1	2	1	3	1	1	1
C17	Small intestine	3	0	0	0	0	0	1	0	0	0	1	0	0	1	0	0	0	0	0
C18-C20	Colon and Rectum	132	0	0	0	0	2	0	0	3	2	9	11	17	12	24	14	23	10	5
C21	Anus	3	0	0	0	0	0	0	0	0	0	0	0	0	2	1	0	0	0	0
C22	Liver and Bile ducts	110	0	0	0	0	0	1	1	5	5	16	20	14	15	13	5	7	5	3
C23-C24	Gallbladder	1	0	0	0	0	0	0	0	0	0	0	0	0	1	0	0	0	0	0
C25	Pancreas	10	0	0	0	0	0	0	0	0	0	0	0	0	1	0	0	0	0	0
C30-C31	Nose, sinuses etc	10	0	0	0	0	1	0	1	1	1	0	0	1	1	1	2	0	0	1
C32	Larynx	16	0	0	0	0	0	0	0	0	1	0	0	3	4	3	2	2	1	0
C33-C34	Trachea, bronchus, lung	142	1	0	0	0	2	0	1	2	2	13	13	18	21	26	17	12	11	3
C37-C39	Other thoracic organs	7	0	0	0	0	5	1	0	1	0	0	0	0	0	0	0	0	0	0
C40-C41	Bone & joints	14	0	0	0	1	1	1	0	0	0	0	4	2	1	1	1	0	1	1
C43-C44	Melanoma of skin	28	0	0	0	0	1	0	2	1	2	2	3	1	4	0	3	2	4	3
C45-C49	Mesothelioma	14	1	0	0	0	2	1	1	0	3	2	1	0	1	0	0	0	2	0
C50	Breast	3	0	0	0	0	0	0	0	0	0	0	0	1	1	0	0	0	0	1
C60, C62-C63	Male genital organs	7	0	0	0	2	0	1	1	0	2	0	0	0	0	0	0	0	1	0
C61	Prostate	82	0	0	0	0	0	0	0	0	1	1	1	4	13	20	19	6	12	5
C64-C66	Kidney & Ureter	27	0	0	0	0	1	0	1	2	1	3	5	0	6	2	5	1	0	0
C67	Bladder	37	0	0	0	0	0	0	0	1	1	1	2	3	2	6	6	6	7	2
C69-C70	Eye & Meninges	1	0	0	0	0	1	0	0	0	0	0	0	0	0	0	0	0	0	0
C71-C72	Brain	8	0	0	1	1	0	0	0	1	0	0	1	0	1	0	1	2	0	0
C73	Thyroid gland	19	0	0	0	0	1	0	2	1	2	5	3	3	2	0	0	0	0	0
C74	Adrenal gland	1	0	0	0	0	0	0	0	0	0	1	0	0	0	0	0	0	0	0
C75	Other endocrine glands	3	0	0	0	0	0	0	0	0	0	0	0	0	1	0	0	2	0	0
C80	Without unspecified	14	0	0	1	0	2	0	1	2	0	1	2	1	0	1	1	2	0	0
C81	Hodgkin's disease	9	0	1	0	0	1	3	1	0	1	0	0	1	0	1	0	0	0	0
C82 -C85,	Non-Hodgkin lymphoma	41	0	0	2	0	1	0	0	1	5	1	4	10	7	3	4	1	0	2
C90	Multiple myeloma	17	0	0	0	0	0	0	0	0	0	0	1	2	8	3	1	2	0	0
C91-C95	Leukemia	26	2	4	4	1	2	0	1	0	0	1	3	1	3	0	1	2	0	1
Total		885	4	5	8	3	26	8	13	24	32	71	84	100	134	119	95	73	58	28

● FEMALE ●

TABLE 65

DISTRIBUTION OF NEW CANCER PATIENTS BY MORPHOLOGY AND SITE : 2019

ICD_10	Sites	Age Total	00	05	10	15	20	25	30	35	40	45	50	55	60	65	70	75	80	85+
			- 04	- 09	- 14	- 19	- 24	- 29	- 34	- 39	- 44	- 49	- 54	- 59	- 64	- 69	- 74	- 79	- 84	
C00-C08	Oral cavity	12	0	0	0	0	0	0	2	2	0	2	1	3	0	0	0	0	1	1
C01,C05,C10	Oropharynx	1	0	0	0	0	0	0	0	0	0	0	0	0	1	0	0	0	0	0
C11	Nasopharynx	12	0	0	0	0	0	1	1	1	2	3	2	1	0	0	1	0	0	0
C12-C13	Hypopharynx	2	0	0	0	0	0	0	0	0	0	0	1	0	1	0	0	0	0	0
C14	Pharynx	2	0	0	0	0	0	0	0	0	1	0	0	0	1	0	0	0	0	0
C16	Stomach	14	0	0	0	0	0	0	0	2	1	1	0	3	0	2	0	1	4	0
C17	Small intestine	2	0	0	0	0	0	0	0	0	1	0	0	1	0	0	0	0	0	0
C18-C20	Colon and Rectum	91	0	0	0	1	0	1	0	5	5	7	11	6	12	10	11	8	6	8
C21	Anus	1	0	0	0	0	0	0	0	1	0	0	0	0	0	0	0	0	0	0
C22	Liver and Bile ducts	24	0	1	0	0	0	0	0	1	1	1	3	3	4	5	4	0	1	0
C23-C24	Gallbladder	8	0	0	0	0	0	0	1	0	1	0	1	1	0	1	1	0	1	1
C25	Pancreas	14	0	0	0	0	0	0	0	1	1	1	0	0	2	2	3	3	1	0
C26	Other and ill-defined digestive organs	1	0	0	0	0	0	0	0	0	0	0	0	0	1	0	0	0	0	0
C30-C31	Nose, sinuses etc	4	0	0	0	0	0	0	0	0	1	1	1	0	0	0	0	1	0	0
C32	Larynx	1	0	0	0	0	0	0	0	0	0	1	0	0	0	0	0	0	0	0
C33-C34	Trachea, bronchus, lung	70	0	0	0	0	0	0	3	2	6	4	7	9	9	10	6	4	6	4
C37-C39	Other thoracic organs	2	0	0	0	0	0	0	0	0	0	0	0	1	0	1	0	0	0	0
C40-C41	Bone	9	0	1	0	1	0	1	1	1	1	1	1	0	0	1	0	0	0	0
C43-C44	Melanoma of skin	29	0	0	0	0	0	0	1	0	0	1	3	0	3	3	2	4	5	7
C45-C49	Connective and soft tissue	10	1	1	0	0	0	0	0	1	2	1	2	2	0	0	0	0	0	0
C50	Breast	206	0	0	0	0	0	0	9	10	18	18	36	24	37	20	15	10	6	3
C51-C52, C57	Female genital organs	4	0	0	0	0	0	0	0	0	0	2	1	1	0	0	0	0	0	0
C53	Cervix uteri	59	0	0	0	0	0	1	4	9	7	8	5	5	7	5	4	0	3	1
C54	Corpus uteri	36	0	0	0	0	0	1	1	2	3	2	3	7	7	3	2	5	0	0
C55	Uterus	7	0	0	0	0	0	0	0	0	1	1	0	1	1	1	1	1	0	0
C56	Ovary	38	0	0	0	0	1	2	1	3	1	5	5	8	1	3	3	4	1	0
C64-C66	Kidney & Ureter	13	0	0	0	0	0	1	1	0	1	0	1	2	3	0	1	2	0	1
C67	Bladder	5	0	0	0	0	0	0	0	0	0	0	2	0	0	1	2	0	0	0
C69-C70	Eye & Meninges	1	0	0	0	0	0	0	0	0	0	1	0	0	0	0	0	0	0	0
C71-C72	Brain	10	0	1	0	0	0	3	2	0	0	1	0	2	0	1	0	0	0	0
C73	Thyroid gland	83	0	0	0	0	4	9	13	9	13	9	12	7	3	2	1	0	1	0
C80	Without unspecified	4	0	1	0	0	0	0	1	0	0	0	0	0	0	1	0	0	1	0
C81	Hodgkin's disease	3	0	0	0	0	1	0	0	0	0	0	1	0	0	0	0	0	0	1
C82 -C85	Non-Hodgkin lymphoma	25	0	0	0	0	0	1	0	2	3	1	4	2	3	4	1	1	2	1
C90	Multiple myeloma	11	0	0	0	0	0	0	1	1	0	3	1	2	0	2	1	0	0	0
C91-C95	Leukaemia	21	5	0	2	0	1	0	0	1	1	1	1	4	1	1	0	1	1	1
Total		835	6	5	2	2	7	21	42	53	72	76	105	95	97	79	59	45	40	29

TABLE 66 DISTRIBUTION OF NEW CANCER PATIENTS BY MORPHOLOGY AND SITE : 2019

ICD-10	Code	Morphology Description	Number of cases		
			Male	Female	Total
C15.4	8070/3	Squamous cell carcinoma, NOS	1	0	1
	8070/6	Squamous cell carcinoma, metastatic, NOS	2	0	2
C15.5	8070/3	Squamous cell carcinoma, NOS	2	0	2
C15.9	8070/3	Squamous cell carcinoma, NOS	6	0	6
	8070/6	Squamous cell carcinoma, metastatic, NOS	3	0	3
	8140/3	Adenocarcinoma, NOS	1	0	1
C16	Stomach		10	13	23
C16.0	8010/3	Carcinoma, NOS	1	0	1
	8140/3	Adenocarcinoma, NOS	2	1	3
	8140/6	Adenocarcinoma, metastatic, NOS	1	0	1
C16.1	8490/3	Signet ring carcinoma	0	1	1
C16.2	8010/6	Carcinoma, metastatic, NOS	1	0	1
	8140/3	Adenocarcinoma, NOS	2	1	3
	8140/6	Adenocarcinoma, metastatic, NOS	0	1	1
C16.3	8140/3	Adenocarcinoma, NOS	0	1	1
C16.4	8140/6	Adenocarcinoma, metastatic, NOS	1	0	1
C16.9	8010/6	Carcinoma, metastatic, NOS	0	2	2
	8140/3	Adenocarcinoma, NOS	2	2	4
	8140/6	Adenocarcinoma, metastatic, NOS	1	3	4
C17	Small intestine		3	1	4
C17.0	8140/6	Adenocarcinoma, metastatic, NOS	0	1	1
C17.1	8140/6	Adenocarcinoma, metastatic, NOS	1	0	1
C17.9	8140/3	Adenocarcinoma, NOS	1	0	1
	8140/6	Adenocarcinoma, metastatic, NOS	1	0	1
C18-C20	Colon & Rectosigmoid junction & Rectum		130	88	218
C18.0	8140/3	Adenocarcinoma, NOS	6	4	10
	8140/6	Adenocarcinoma, metastatic, NOS	2	0	2
	8480/3	Mucinous adenocarcinoma	2	0	2
C18.1	8140/3	Adenocarcinoma, NOS	0	2	2
C18.2	8140/3	Adenocarcinoma, NOS	6	4	10
	8140/6	Adenocarcinoma, metastatic, NOS	1	0	1
C18.3	8140/3	Adenocarcinoma, NOS	0	2	2
	8140/6	Adenocarcinoma, metastatic, NOS	0	2	2
C18.4	8140/3	Adenocarcinoma, NOS	7	6	13
	8140/6	Adenocarcinoma, metastatic, NOS	2	1	3
C18.5	8140/3	Adenocarcinoma, NOS	1	3	4
C18.6	8140/3	Adenocarcinoma, NOS	2	4	6
	8140/6	Adenocarcinoma, metastatic, NOS	4	1	5
	8480/3	Mucinous adenocarcinoma	1	0	1
C18.7	8140/3	Adenocarcinoma, NOS	29	19	48
	8140/6	Adenocarcinoma, metastatic, NOS	12	5	17
	8480/3	Mucinous adenocarcinoma	1	0	1
C18.8	8140/3	Adenocarcinoma, NOS	1	0	1
	8140/6	Adenocarcinoma, metastatic, NOS	1	0	1
C18.9	8140/3	Adenocarcinoma, NOS	5	2	7
	8140/6	Adenocarcinoma, metastatic, NOS	5	2	7
C19	8140/6	Adenocarcinoma, metastatic, NOS	0	1	1
C20	8140/3	Adenocarcinoma, NOS	34	23	57
	8140/6	Adenocarcinoma, metastatic, NOS	8	8	16

2019 HOSPITAL-BASED CANCER REGISTRY ANNUAL REPORT

55

TABLE 66

DISTRIBUTION OF NEW CANCER PATIENTS BY MORPHOLOGY AND SITE: 2019

ICD-10	Code	Morphology Description	Number of cases		
			Male	Female	Total
C21	Anus & Anus canal		3	1	4
C21.0	8140/3	Adenocarcinoma, NOS	0	1	1
C21.1	8140/6	Adenocarcinoma, metastatic, NOS	3	0	3
C22	Liver & Intrahepatic bile ducts		34	11	45
C22.0	8140/3	Adenocarcinoma, NOS	5	2	7
	8140/6	Adenocarcinoma, metastatic, NOS	2	1	3
	8160/3	Cholangiocarcinoma	1	0	1
	8170/3	Hepatocellular carcinoma, NOS	18	6	24
C22.1	8140/6	Adenocarcinoma, metastatic, NOS	3	1	4
	8160/3	Cholangiocarcinoma	2	0	2
	8170/3	Hepatocellular carcinoma, NOS	1	0	1
C22.9	8010/3	Carcinoma, NOS	0	1	1
	8140/6	Adenocarcinoma, metastatic, NOS	2	0	2
C23-C24	Gall bladder & Unspecified parts of biliary tract		1	8	9
C23	8140/3	Adenocarcinoma, NOS	0	2	2
C24.0	8140/3	Adenocarcinoma, NOS	0	1	1
	8140/6	Adenocarcinoma, metastatic, NOS	0	3	3
C24.1	8140/3	Adenocarcinoma, NOS	1	1	2
C24.9	8140/6	Adenocarcinoma, metastatic, NOS	0	1	1
C25	Pancreas		9	13	22
C25.0	8010/3	Carcinoma, NOS	0	1	1
	8140/3	Adenocarcinoma, NOS	2	3	5
	8140/6	Adenocarcinoma, metastatic, NOS	2	2	4
C25.1	8140/6	Adenocarcinoma, metastatic, NOS	0	2	2
C25.2	8140/6	Adenocarcinoma, metastatic, NOS	0	1	1
C25.3	8010/3	Carcinoma, NOS	1	0	1
	8140/6	Adenocarcinoma, metastatic, NOS	0	1	1
C25.4	8140/3	Adenocarcinoma, NOS	0	1	1
C25.7	8140/3	Adenocarcinoma, NOS	1	0	1
C25.9	8140/3	Adenocarcinoma, NOS	2	1	3
	8140/6	Adenocarcinoma, metastatic, NOS	1	1	2
C26	Other and ill-defined digestive organs		0	1	1
C26.0	8936/3	Gastrointestinal stromal sarcoma	0	1	1
C30-C31	Nasal cavity & Accessory sinuses		10	4	14
C30.0	8010/3	Carcinoma, NOS	2	1	3
	8070/3	Squamous cell carcinoma, NOS	5	2	7
	8140/6	Adenocarcinoma, metastatic, NOS	1	0	1
C31.0	8070/3	Squamous cell carcinoma, NOS	1	1	2
	8140/3	Adenocarcinoma, NOS	1	0	1
C32	Larynx		16	1	17
C32.0	8070/3	Squamous cell carcinoma, NOS	13	1	14
	8070/6	Squamous cell carcinoma, metastatic, NOS	1	0	1
C32.1	8070/3	Squamous cell carcinoma, NOS	2	0	2
C33-C34	Trachea, Bronchus & Lung		135	65	200
C34.0	8046/3	Non-small cell carcinoma	4	0	4
	8070/3	Squamous cell carcinoma, NOS	1	0	1
	8140/3	Adenocarcinoma, NOS	20	7	27
	8140/6	Adenocarcinoma, metastatic, NOS	2	0	2

TABLE 66 DISTRIBUTION OF NEW CANCER PATIENTS BY MORPHOLOGY AND SITE: 2019

ICD-10	Code	Morphology Description	Number of cases		
			Male	Female	Total
C34.1	8010/3	Carcinoma, NOS	2	0	2
	8010/6	Carcinoma, metastatic, NOS	3	2	5
	8046/3	Non-small cell carcinoma	0	1	1
	8140/3	Adenocarcinoma, NOS	8	8	16
	8140/6	Adenocarcinoma, metastatic, NOS	2	0	2
C34.2	8046/3	Non-small cell carcinoma	3	0	3
	8140/3	Adenocarcinoma, NOS	3	3	6
	8140/6	Adenocarcinoma, metastatic, NOS	1	0	1
C34.3	8046/3	Non-small cell carcinoma	1	1	2
	8070/3	Squamous cell carcinoma, NOS	1	0	1
	8140/6	Adenocarcinoma, metastatic, NOS	4	1	5
C34.8	8010/6	Carcinoma, metastatic, NOS	0	1	1
C34.9	8010/3	Carcinoma, NOS	7	2	9
	8010/6	Carcinoma, metastatic, NOS	7	2	9
	8046/3	Non-small cell carcinoma	9	3	12
	8070/3	Squamous cell carcinoma, NOS	2	1	3
	8140/3	Adenocarcinoma, NOS	33	21	54
	8140/6	Adenocarcinoma, metastatic, NOS	10	6	16
C37-C38	Intrathoracic organs		6	2	8
C37	9080/3	Teratoma, malignant, NOS	1	0	1
C38.1	8160/3	Cholangiocarcinoma	1	0	1
	9080/3	Teratoma, malignant, NOS	2	0	2
	8010/6	Carcinoma, metastatic, NOS	2	0	2
C38.3	8010/6	Carcinoma, metastatic, NOS	0	1	1
C38.4	8010/6	Carcinoma, metastatic, NOS	0	1	1
C40-C41	Bone & Articular cartilage		14	9	23
C40.1	8010/6	Carcinoma, metastatic, NOS	3	0	3
	8801/3	Spindle cell sarcoma	1	1	2
	9040/3	Synovial sarcoma, NOS	1	0	1
	9220/3	Chondrosarcoma, NOS	0	1	1
C40.2	8010/6	Carcinoma, metastatic, NOS	1	2	3
	8801/3	Spindle cell sarcoma	2	0	2
	8802/3	Giant cell sarcoma	0	1	1
	9040/3	Synovial sarcoma, NOS	0	1	1
	9180/3	Osteosarcoma, NOS	0	2	2
	9220/3	Chondrosarcoma, NOS	3	1	4
C419	9180/3	Osteosarcoma, NOS	2	0	2
	9220/3	Chondrosarcoma, NOS	1	0	1
C43-C44	Skin		28	29	57
C43.1	8010/6	Carcinoma, metastatic, NOS	1	0	1
C43.4	8720/3	Malignant melanoma, NOS	1	0	1
C43.5	8010/6	Carcinoma, metastatic, NOS	0	1	1
	8720/3	Malignant melanoma, NOS	1	0	1
C43.6	8720/3	Malignant melanoma, NOS	0	1	1
C43.7	8010/6	Carcinoma, metastatic, NOS	1	0	1
C44.0	8720/3	Malignant melanoma, NOS	2	2	4
	8070/3	Squamous cell carcinoma, NOS	0	1	1
	8090/3	Basal cell carcinoma, NOS	0	1	1

2019 HOSPITAL-BASED CANCER REGISTRY ANNUAL REPORT

57

TABLE 66

DISTRIBUTION OF NEW CANCER PATIENTS BY MORPHOLOGY AND SITE: 2019

ICD-10	Code	Morphology Description	Number of cases		
			Male	Female	Total
C44.1	8090/3	Basal cell carcinoma, NOS	1	1	2
C44.2	8070/3	Squamous cell carcinoma, NOS	1	1	2
C44.3	8070/3	Squamous cell carcinoma, NOS	5	5	10
	8090/3	Basal cell carcinoma, NOS	5	6	11
	8092/3	Infiltrating basal cell carcinoma, NOS	1	1	2
C44.4	8070/3	Squamous cell carcinoma, NOS	1	0	1
C44.5	8070/3	Squamous cell carcinoma, NOS	1	0	1
	8090/3	Basal cell carcinoma, NOS	0	1	1
C44.6	8070/3	Squamous cell carcinoma, NOS	1	0	1
	8090/3	Basal cell carcinoma, NOS	1	0	1
C44.7	8070/3	Squamous cell carcinoma, NOS	2	0	2
	8720/3	Malignant melanoma, NOS	1	0	1
C44.9	8070/3	Squamous cell carcinoma, NOS	1	3	4
	8090/3	Basal cell carcinoma, NOS	1	4	5
	8092/3	Infiltrating basal cell carcinoma, NOS	0	1	1
C45 – C49	Mesothelial & Soft tissue		13	9	22
C46.8	8010/3	Carcinoma, NOS	1	0	1
C47.0	8858/3	Dedifferentiated liposarcoma	1	0	1
C47.1	8801/3	Spindle cell sarcoma	0	1	1
C48.0	8858/3	Dedifferentiated liposarcoma	1	0	1
C48.2	8010/6	Carcinoma, metastatic, NOS	1	2	3
C49.1	8801/3	Spindle cell sarcoma	0	1	1
C49.2	8070/3	Squamous cell carcinoma, NOS	1	0	1
	8801/3	Spindle cell sarcoma	3	1	4
	9040/3	Synovial sarcoma, NOS	0	1	1
	9043/3	Synovial sarcoma, spindle cell	1	0	1
	9180/3	Osteosarcoma, NOS	1	0	1
C49.4	8801/3	Spindle cell sarcoma	0	1	1
	8832/3	Dematofibrosarcoma, NOS	0	1	1
	8851/3	Liposarcoma, well differentiated	1	0	1
C49.5	9040/3	Synovial sarcoma, NOS	1	1	2
C49.8	8801/3	Spindle cell sarcoma	1	0	1
C50	Breast		3	204	207
C50.0	8500/3	Infiltrating duct carcinoma, NOS	0	14	14
	8140/6	Adenocarcinoma, metastatic, NOS	0	2	2
C50.1	8500/3	Infiltrating duct carcinoma, NOS	0	8	8
	8520/3	Lobular carcinoma, NOS	0	1	1
	8140/6	Adenocarcinoma, metastatic, NOS	0	1	1
C50.2	8480/3	Mucinous adenocarcinoma	0	1	1
	8500/3	Infiltrating duct carcinoma, NOS	0	9	9
	8140/6	Adenocarcinoma, metastatic, NOS	0	1	1
C50.3	8500/3	Infiltrating duct carcinoma, NOS	0	2	2
	8140/6	Adenocarcinoma, metastatic, NOS	0	2	2
C50.4	8010/3	Carcinoma, NOS	0	1	1
	8010/6	Carcinoma, metastatic, NOS	1	1	2
	8500/3	Infiltrating duct carcinoma, NOS	0	20	20
C50.5	8140/6	Adenocarcinoma, metastatic, NOS	0	1	1
	8480/3	Mucinous adenocarcinoma	0	1	1

TABLE 66 DISTRIBUTION OF NEW CANCER PATIENTS BY MORPHOLOGY AND SITE: 2019

ICD-10	Code	Morphology Description	Number of cases		
			Male	Female	Total
	8500/3	Infiltrating duct carcinoma, NOS	0	7	7
C50.6	8140/6	Adenocarcinoma, metastatic, NOS	0	1	1
	8500/3	Infiltrating duct carcinoma, NOS	0	1	1
C50.8	8500/3	Infiltrating duct carcinoma, NOS	0	2	2
C50.9	8010/3	Carcinoma, NOS	0	1	1
	8010/6	Carcinoma, metastatic, NOS	0	9	9
	8140/3	Adenocarcinoma, NOS	0	2	2
	8140/6	Adenocarcinoma, metastatic, NOS	0	14	14
	8480/3	Mucinous adenocarcinoma	0	1	1
	8500/3	Infiltrating duct carcinoma, NOS	2	100	102
	8520/3	Lobular carcinoma, NOS	0	1	1
C51,C52,C57	Female genital organs		0	4	4
C52.0	8010/3	Carcinoma, NOS	0	1	1
C57.0	8010/3	Carcinoma, NOS	0	1	1
	8051/3	Verrucous carcinoma, NOS	0	2	2
C53	Cervix		0	59	59
C53.0	8070/6	Squamous cell carcinoma, metastatic, NOS	0	2	2
	8071/3	Squamous cell carcinoma, nonkeratinizing, NOS	0	1	1
	8072/3	Squamous cell carcinoma, large cell, nonkeratinizing, NOS	0	1	1
	8140/3	Adenocarcinoma, NOS	0	3	3
C53.1	8070/3	Squamous cell carcinoma, NOS	0	12	12
	8070/6	Squamous cell carcinoma, metastatic, NOS	0	4	4
	8071/3	Squamous cell carcinoma, nonkeratinizing, NOS	0	11	11
	8072/3	Squamous cell carcinoma, large cell, nonkeratinizing, NOS	0	3	3
	8140/3	Adenocarcinoma, NOS	0	2	2
	8380/3	Endometrioid adenocarcinoma, NOS	0	1	1
C53.9	8070/3	Squamous cell carcinoma, NOS	0	5	5
	8071/3	Squamous cell carcinoma, nonkeratinizing, NOS	0	7	7
	8140/3	Adenocarcinoma, NOS	0	7	7
C54	Corpus uteri		0	36	36
C54.1	8010/3	Carcinoma, NOS	0	8	8
	8010/6	Carcinoma, metastatic, NOS	0	1	1
	8140/3	Adenocarcinoma, NOS	0	3	3
	8380/3	Endometrioid adenocarcinoma, NOS	0	20	20
	8441/3	Serous cystadenocarcinoma, NOS	0	2	2
C54.2	8801/3	Spindle cell sarcoma	0	1	1
	8010/6	Carcinoma, metastatic, NOS	0	1	1
C55	Uterus		0	7	7
C55	8380/3	Endometrioid adenocarcinoma, NOS	0	5	5
	8890/3	Leiomyosarcoma, NOS	0	2	2
C56	Ovary		0	38	38
C56	8010/3	Carcinoma, NOS	0	9	9
	8140/3	Adenocarcinoma, NOS	0	6	6
	8310/3	Clear cell adenocarcinoma, NOS	0	7	7
	8380/3	Endometrioid adenocarcinoma, NOS	0	4	4
	8441/3	Serous cystadenocarcinoma	0	1	1
	8480/3	Mucinous adenocarcinoma	0	3	3
	8140/6	Adenocarcinoma, metastatic, NOS	0	8	8

2019 HOSPITAL-BASED CANCER REGISTRY ANNUAL REPORT

59

TABLE 66 DISTRIBUTION OF NEW CANCER PATIENTS BY MORPHOLOGY AND SITE: 2019

ICD-10	Code	Morphology Description	Number of cases		
			Male	Female	Total
C60, C62 – C63	Male genital organs		2	0	2
C60.9	8070/3	Squamous cell carcinoma, NOS	2	0	2
C61	Prostate gland		81	0	81
C61	8140/3	Adenocarcinoma, NOS	59	0	59
	8140/6	Adenocarcinoma, metastatic, NOS	22	0	22
C62	Testis		5	0	5
	9061/3	Seminoma, NOS	4	0	4
	9064/3	Germinoma	1	0	1
C64-C66	Kidney, Renal pelvis & Ureter		26	13	39
C64	8010/3	Carcinoma, NOS	1	1	2
	8010/6	Carcinoma, metastatic, NOS	5	2	7
	8120/3	Transitional cell carcinoma, NOS	1	0	1
	8140/3	Adenocarcinoma, NOS	3	0	3
	8312/3	Renal cell carcinoma, NOS	11	7	18
C65	8120/3	Transitional cell carcinoma, NOS	1	3	4
	8010/6	Carcinoma, metastatic, NOS	2	0	2
C66	8120/3	Transitional cell carcinoma, NOS	1	0	1
	8010/6	Carcinoma, metastatic, NOS	1	0	1
C67	Bladder		36	4	40
C67.0	8120/3	Transitional cell carcinoma, NOS	1	0	1
	8130/3	Papillary transitional cell carcinoma	2	0	2
	8010/6	Carcinoma, metastatic, NOS	1	0	1
C67.1	8120/3	Transitional cell carcinoma, NOS	2	0	2
	8130/3	Papillary transitional cell carcinoma	2	0	2
C67.2	8130/3	Papillary transitional cell carcinoma	4	0	4
	8010/6	Carcinoma, metastatic, NOS	2	0	2
C67.3	8120/3	Transitional cell carcinoma, NOS	1	1	2
C67.4	8120/3	Transitional cell carcinoma, NOS	2	0	2
	8130/3	Papillary transitional cell carcinoma	3	0	3
	8130/3	Papillary transitional cell carcinoma	1	0	1
C67.9	8010/3	Carcinoma, NOS	1	0	1
	8010/6	Carcinoma, metastatic, NOS	2	1	3
	8120/3	Transitional cell carcinoma, NOS	7	1	8
	8130/3	Papillary transitional cell carcinoma	3	1	4
	8140/3	Adenocarcinoma, NOS	2	0	2
C69-C70	Eye & Meninges		0	2	2
C69.6	9510/3	Retinoblastoma, differentiated	0	2	2
C71	Brain		7	9	16
C71.7	9440/3	Glioblastoma, NOS	1	0	1
C71.9	8010/3	Carcinoma, NOS	3	2	5
	9401/3	Astrocytoma, anaplastic	2	2	4
	9440/3	Glioblastoma, NOS	0	1	1
	9442/3	Gliosarcoma	0	3	3
	9470/3	Medulloblastoma, NOS	1	1	2

TABLE 66 DISTRIBUTION OF NEW CANCER PATIENTS BY MORPHOLOGY AND SITE : 2019

ICD-10	Code	Morphology Description	Number of cases		
			Male	Female	Total
C73	Thyroid gland		19	83	102
	8010/3	Carcinoma, NOS	0	1	1
	8010/6	Carcinoma, metastatic, NOS	2	5	7
	8050/3	Papillary carcinoma, NOS	11	56	67
	8140/3	Adenocarcinoma, NOS	0	1	1
	8260/3	Papillary Adenocarcinoma, NOS	2	1	3
	8330/3	Follicular Adenocarcinoma, NOS	0	1	1
	8335/3	Follicular carcinoma, minimally invasive	1	4	5
	8340/3	Papillary carcinoma, follicular variant	1	0	1
	8341/3	Papillary microcarcinoma	0	1	1
C74	Adrenal gland		1	0	1
C74.0	8010/3	Carcinoma, NOS	1	0	1
C76-C79	Other endocrine glands and relate structures		3	0	3
C76.0	8140/3	Adenocarcinoma, NOS	1	0	1
C77.9	8140/3	Adenocarcinoma, NOS	1	0	1
C78.6	8140/6	Adenocarcinoma, metastatic, NOS	1	0	1
C80	Without specification of site		14	4	18
C80.0	8010/3	Carcinoma, NOS	4	0	4
	8010/6	Carcinoma, metastatic, NOS	4	2	6
	8140/3	Adenocarcinoma, NOS	1	0	1
	8140/6	Adenocarcinoma, metastatic, NOS	1	0	1
C80.9	8010/3	Carcinoma, NOS	1	1	2
	8010/6	Carcinoma, metastatic, NOS	2	0	2
	8140/3	Adenocarcinoma, NOS	1	0	1
	8140/6	Adenocarcinoma, metastatic, NOS	0	1	1
C81	Hodgkin's lymphoma		9	3	12
C81.1	9560/3	Neurilemoma, malignant	1	0	1
	9650/3	Hodgkin's lymphoma, NOS	3	0	3
C81.7	9650/3	Hodgkin's lymphoma, NOS	3	2	5
C81.9	9560/3	Neurilemoma, malignant	0	1	1
	9650/3	Hodgkin's lymphoma, NOS	2	0	2
C82-C85	Non - Hodgkin's lymphoma		40	25	65
C82.3	9591/3	Malignant lymphoma, non - Hodgkin, NOS	1	0	1
	9596/3	Composite Hodgkin and non - Hodgkin lymphoma	1	0	1
C82.9	9591/3	Malignant lymphoma, non - Hodgkin, NOS	1	0	1
	9680/3	Malignant lymphoma, large B-cell, diffuse, NOS	1	0	1
C83.0	9596/3	Composite Hodgkin and non - Hodgkin lymphoma	1	0	1
	9680/3	Malignant lymphoma, large B-cell, diffuse, NOS	1	0	1
C83.3	9590/3	Malignant lymphoma, NOS	1	0	1
	9591/3	Malignant lymphoma, non - Hodgkin, NOS	7	10	17
	9596/3	Composite Hodgkin and non - Hodgkin lymphoma	4	1	5
	9680/3	Malignant lymphoma, large B-cell, diffuse, NOS	4	3	7
C83.5	9702/3	Mature T-cell lymphoma, NOS	1	0	1
C83.8	9590/3	Malignant lymphoma, NOS	1	1	2
C84.4	9591/3	Malignant lymphoma, non - Hodgkin, NOS	0	1	1
	9702/3	Mature T-cell lymphoma, NOS	0	1	1
C84.6	9596/3	Composite Hodgkin and non - Hodgkin lymphoma	1	0	1
C84.8	9702/3	Mature T-cell lymphoma, NOS	1	0	1

2019 HOSPITAL-BASED CANCER REGISTRY ANNUAL REPORT

61

TABLE 66

DISTRIBUTION OF NEW CANCER PATIENTS BY MORPHOLOGY AND SITE : 2019

ICD-10	Code	Morphology Description	Number of cases		
			Male	Female	Total
C85.1	9590/3	Malignant lymphoma, NOS	1	0	1
	9591/3	Malignant lymphoma, non - Hodgkin, NOS	0	1	1
	9680/3	Malignant lymphoma, large B-cell, diffuse, NOS	1	1	2
C85.2	9596/3	Composite Hodgkin and non - Hodgkin lymphoma	1	0	1
C85.9	9590/3	Malignant lymphoma, NOS	0	1	1
	9591/3	Malignant lymphoma, non - Hodgkin, NOS	2	1	3
	9596/3	Composite Hodgkin and non - Hodgkin lymphoma	2	1	3
	9680/3	Malignant lymphoma, large B-cell, diffuse, NOS	4	2	6
	9702/3	Mature T-cell lymphoma, NOS	0	1	1
	9873/3	Acute myeloid leukemia without maturation	1	0	1
C90	Multiple myeloma		17	11	28
C90.0	9732/3	Multiple myeloma	17	11	28
C91-C95	Leukaemia		26	21	47
C91.0	9801/3	Acute Leukaemia, NOS	7	6	13
	9835/3	Precursor cell lymphoblastic leukemia, NOS	2	1	3
	9861/3	Acute myeloid Leukaemia, NOS	0	2	2
C91.1	9861/3	Acute myeloid Leukaemia, NOS	1	0	1
C92.0	9801/3	Acute Leukaemia, NOS	1	3	4
	9861/3	Acute myeloid Leukaemia, NOS	8	6	14
C92.1	9801/3	Acute Leukaemia, NOS	1	0	1
	9861/3	Acute myeloid Leukaemia, NOS	1	0	1
	9863/3	Chronic myeloid Leukaemia, NOS	2	1	3
C92.3	9861/3	Acute myeloid Leukaemia, NOS	1	0	1
C92.5	9861/3	Acute myeloid Leukaemia, NOS	1	0	1
C95.0	9801/3	Acute Leukaemia, NOS	1	1	2
	9835/3	Precursor cell lymphoblastic leukemia, NOS	1	0	1

Remark: Number of ICD-O patients less all of cancer cases because they have no result of pathology.

Survey: 29 March 2021

TABLE 67

DISTRIBUTION OF NEW CANCER PATIENTS BY FOLLOW UP AND GENDER: 2015-2019

Follow up status	Male		Female		Total	
	Number	Percent	Number	Percent	Number	Percent
Alive	1976	46.7	2636	65.9	4651	56.5
Deaths	2256	53.3	1364	34.1	3581	43.5
Total	4232	100.0	4000	100.0	8232	100.0

TABLE 68

THE LEADING PRIMARY SITES OF NEW CANCER BY GENDER: 2015-2019

Ordinal	Primary site	Male		Female		Total	
		Number	Percent	Number	Percent	Number	Percent
1	Colon & Recto sigmoid junction & Rectum	605	21.7	385	13.2	990	17.4
2	Trachea, bronchus & lung	615	22.1	373	12.8	988	17.3
3	Breast	18	0.6	946	32.4	964	16.9
4	Liver & intrahepatic bile ducts	556	20.0	144	4.9	700	12.3
5	Thyroid gland	93	3.3	341	11.7	434	7.6
6	Prostate gland	404	14.5	0	0.0	404	7.1
7	Non-Hodgkin's lymphoma	239	8.6	158	5.4	397	7.0
8	Cervix	0	0.0	303	10.4	303	5.3
9	Skin	131	4.7	155	5.3	286	5.0
10	leukaemia	125	4.5	111	3.8	236	4.1

Survey: 29 March 2021

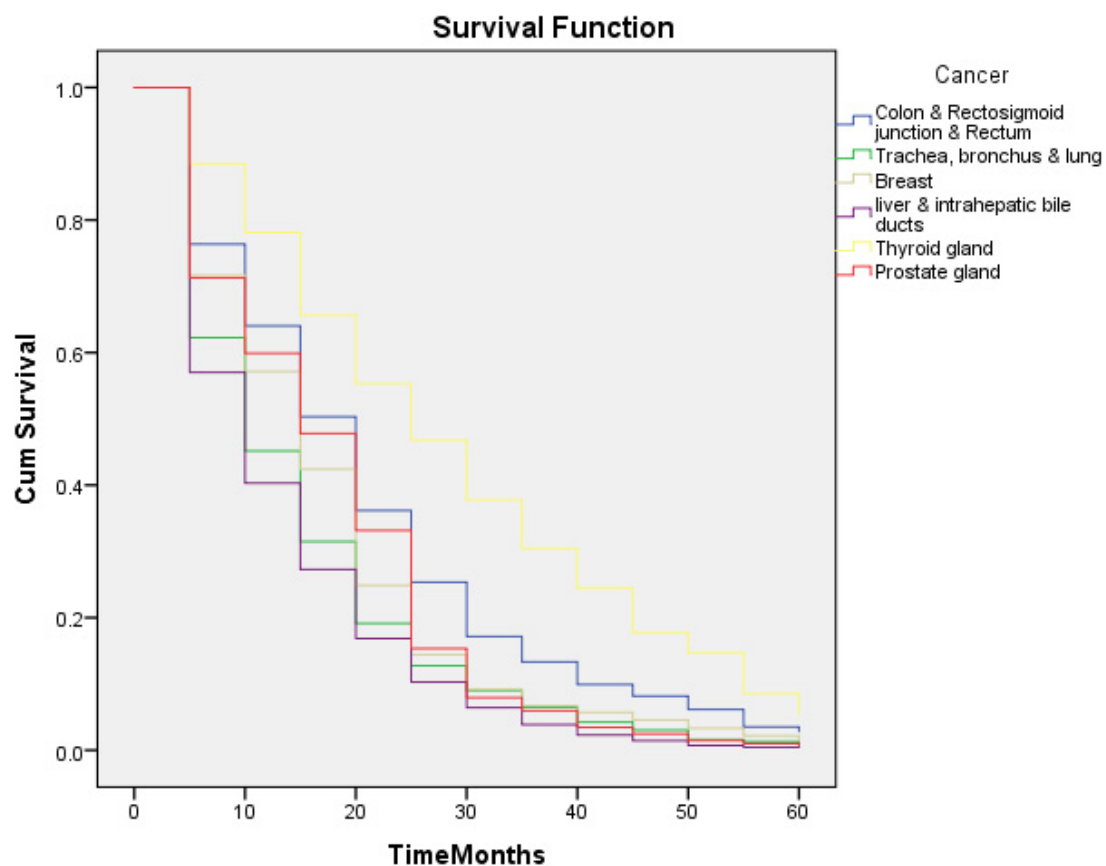


TABLE 69 THE LEADING PRIMARY SITES OF NEW CANCER BY FOLLOW UP AND GENDER: 2015-2019						
Ordinal	Primary site	Alive		Deaths		Total
		Male	Female	Male	Female	
1	Colon & Recto sigmoid junction & Rectum	353	228	252	157	990
2	Trachea, bronchus & lung	133	138	482	235	988
3	Breast	16	732	2	214	964
4	Liver & intrahepatic bile ducts	133	35	423	109	700
5	Thyroid gland	84	327	9	14	434
6	Prostate gland	309	0	95	0	404
7	Non-Hodgkin's lymphoma	126	93	113	65	397
8	Cervix	0	194	0	109	303
9	Skin	93	126	38	29	286
10	leukaemia	53	50	72	61	236

Survey: 29 March 2021

TABLE 70 THE 60 MONTHS SURVIVAL TIME (MEDIAN) TOP 6 BY GENDER IN 2015 - 2019			
Ordinal	Primary site	Male	Female
1	Colon & Recto sigmoid junction & Rectum	15.86	13.95
2	Trachea, bronchus & lung	7.68	9.89
3	Breast	13.00	12.41
4	Liver & intrahepatic bile ducts	7.07	7.17
5	Thyroid gland	25.36	22.66
6	Prostate gland	14.08	0.00

Survey: 29 March 2021

FIGURE 32: THE 60 MONTHS SURVIVAL RATE (TOP 6) IN 2015 – 2019

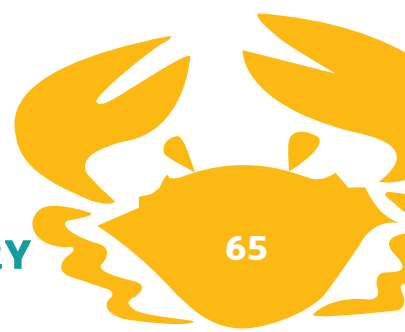


FIGURE 33: THE 60 MONTHS SURVIVAL RATE (TOP 6) BY MALE IN 2015 – 2019

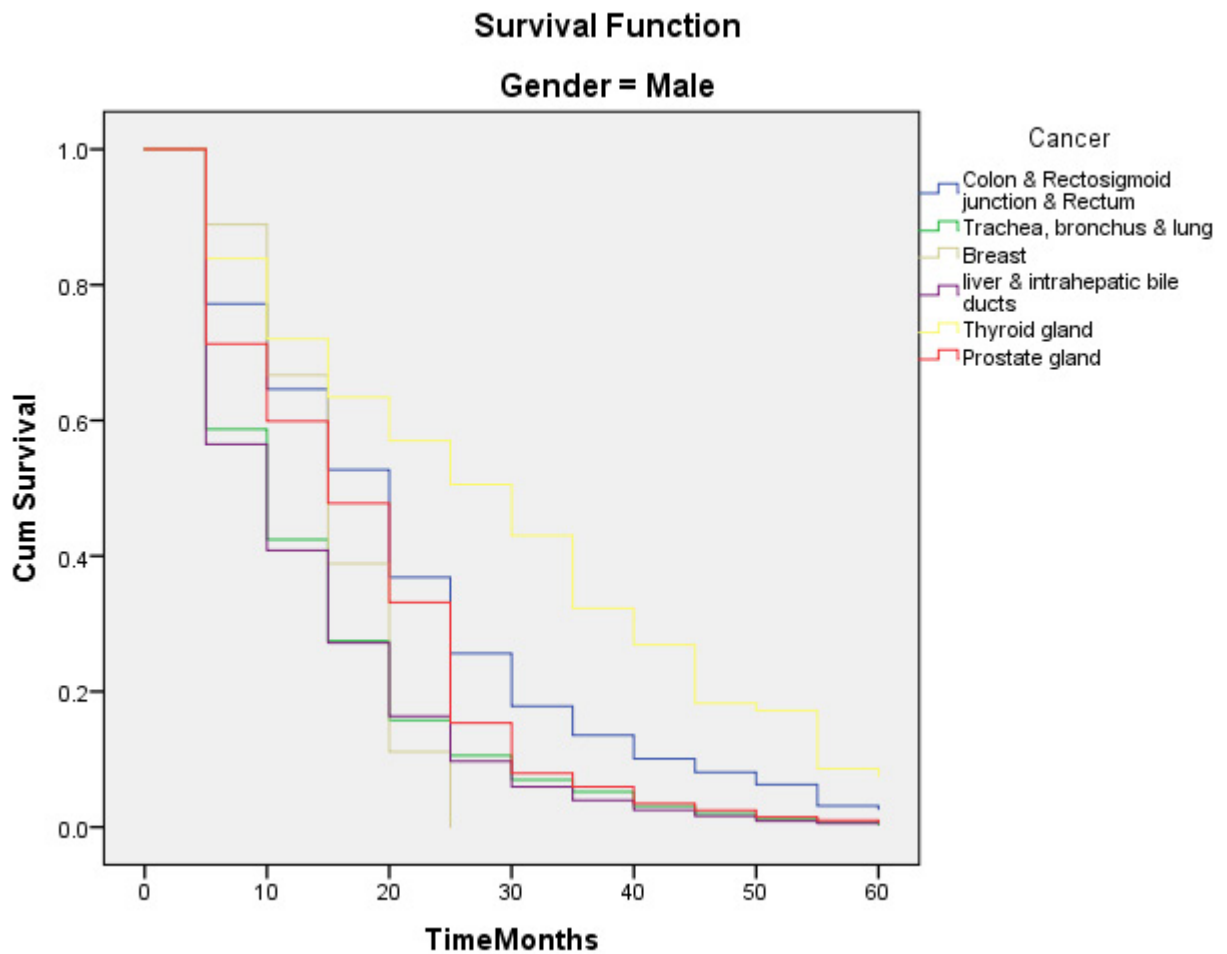
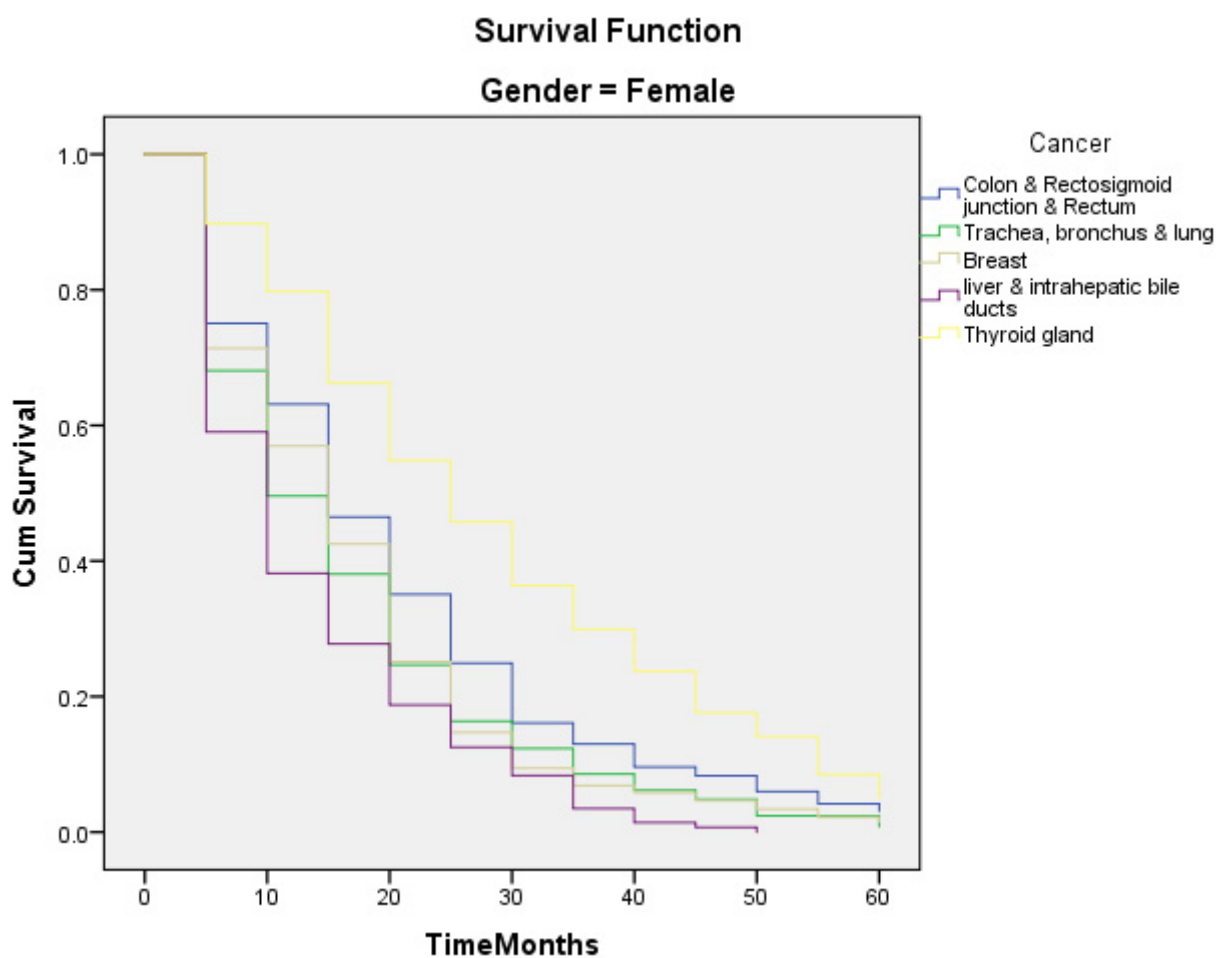
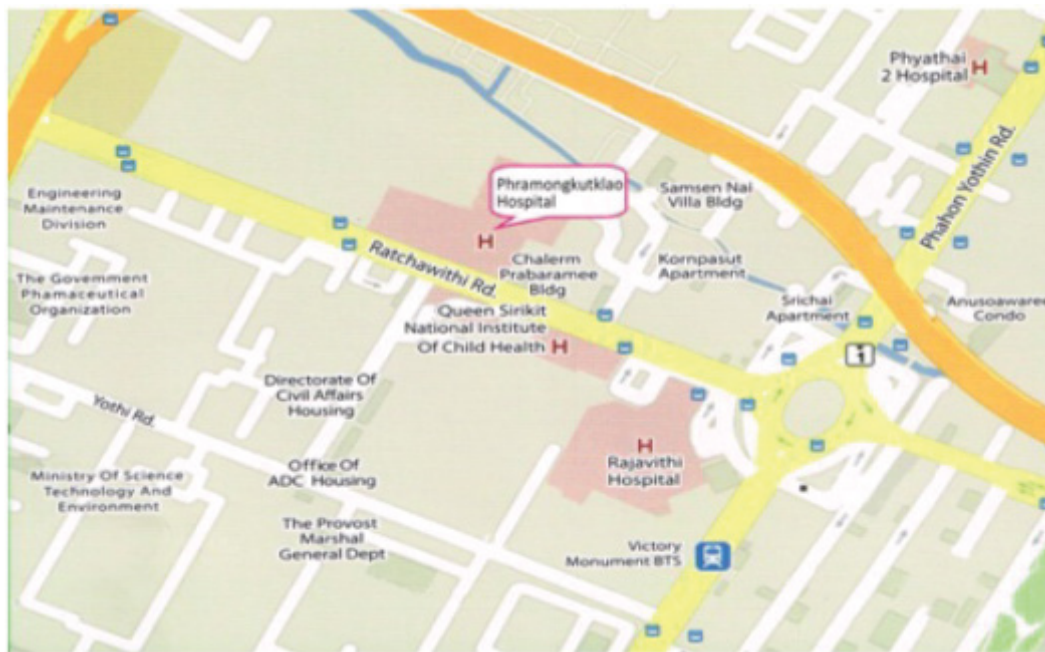


FIGURE 34: THE 60 MONTHS SURVIVAL RATE (TOP 6) BY FEMALE IN 2015 – 2019



Phramongkutklao Hospital 315 Ratchawithi Road, Bangkok 10400, Thailand.





PHRAMONKUTKLAO HOSPITAL

EXCELLENT CENTER
OF CANCER CARE

2019

Oncology Unit and Epidemiology Unit,
Phramongkutklao Hospital.

315 Ratchawithi Road, Bangkok 10400, Thailand.

Tel. : + 66 2763 3925, + 66 2763 3047

Fax. : + 66 2354 7780

Email : ceupmk@hotmail.com

Website : <http://ceu.pmk.ac.th>